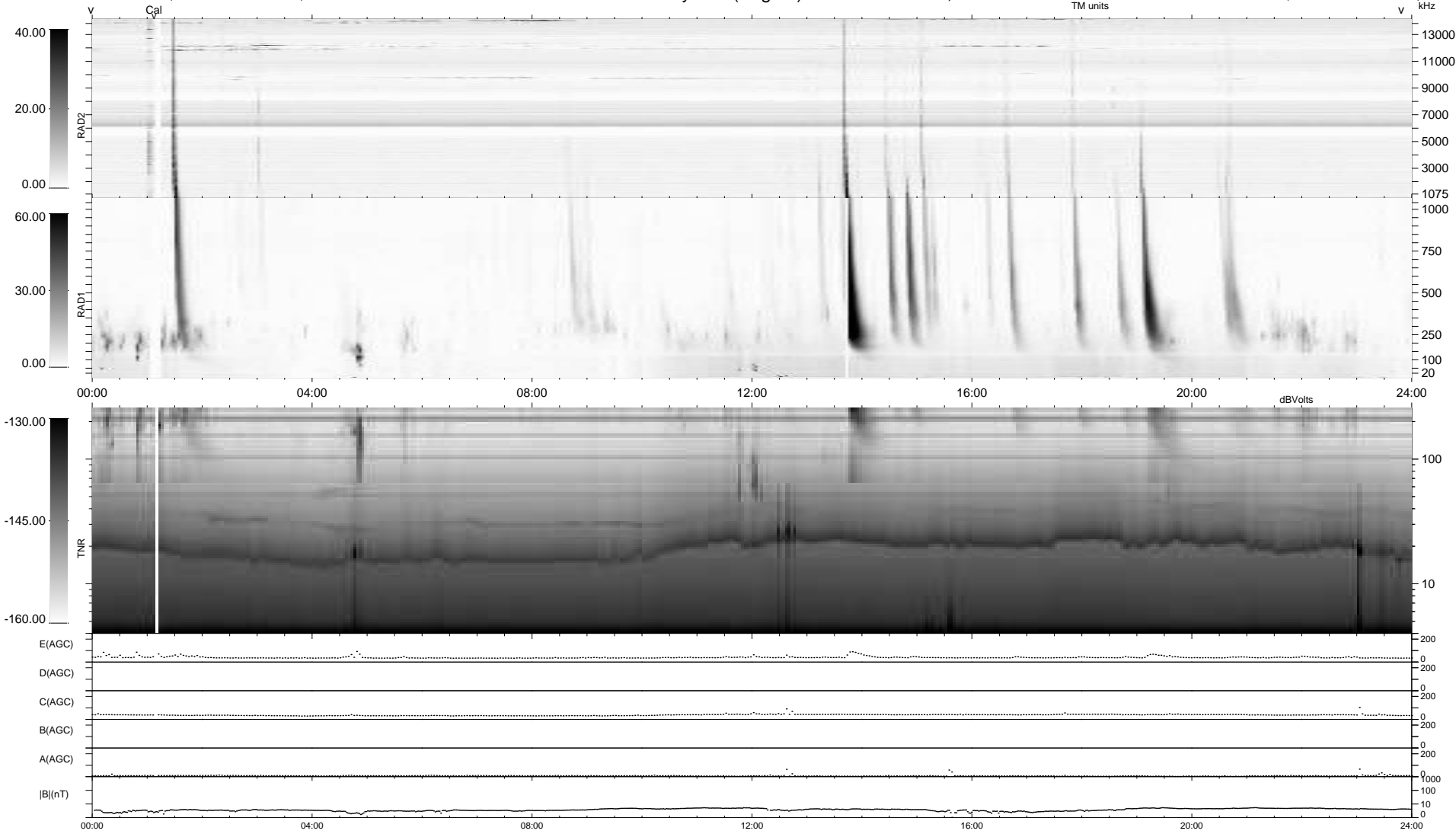


7 bad + 933 good MF/940MF projected (99%) - 0 missing MFs
 Avg interval = 180 secs
 Re = 208.98 (199.06, -63.50, -3.85 GSE)

windlib 2.0b LZ version =
 DAILY 2017-03-21 16:40:52
 Re = 207.68 (198.65, -60.43, -4.31 GSE)

WIND/WAVES Summary Plot (Page 1) for 29-NOV-2016, DOY = 334



RAD2
 Antenna Ey
 Mode LIN(1)
 SUM/SEP SEP
 Toggle OFF
 RAD1
 Antenna Ex
 Mode LIS(2,4)
 SUM/SEP SUM
 Toggle OFF
 TNR
 Antenna ExEy
 Mode A-32
 Sweep ACE