

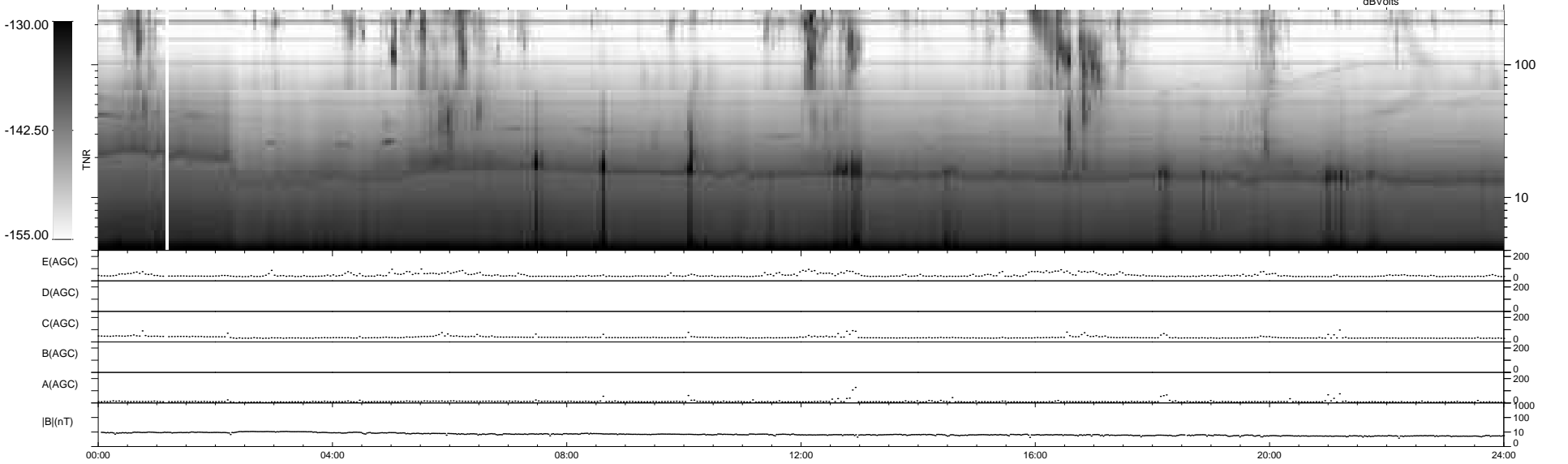
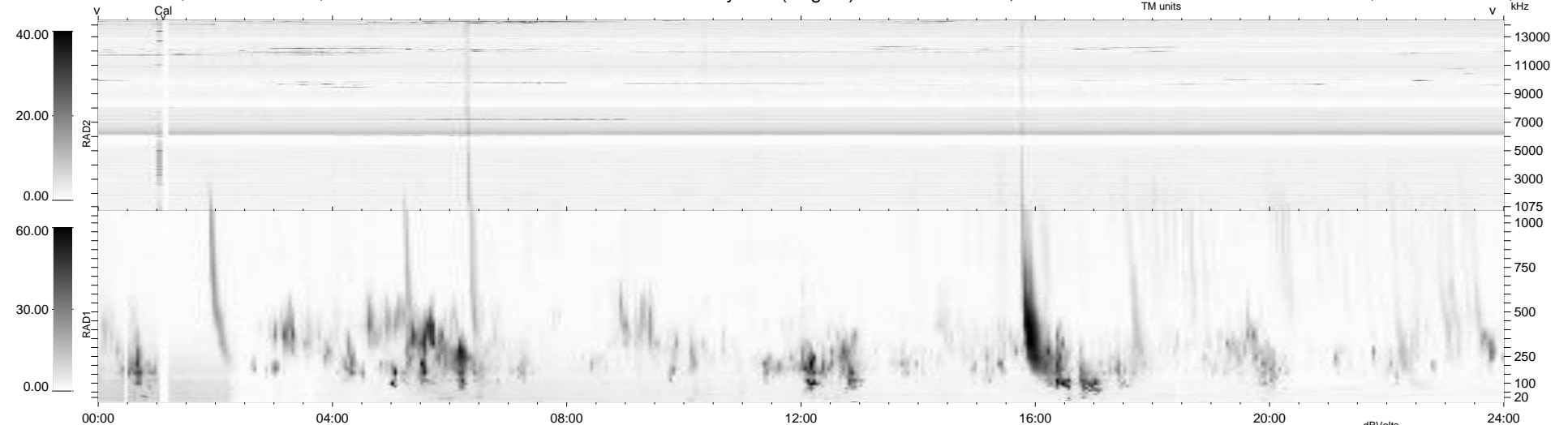
9 bad + 930 good MF/939MF projected (99%) - 0 missing MFs
 Avg interval = 180 secs
 Re = 214.26 (200.78, -74.77, -1.97 GSE)

windlib 2.0b

LZ version =

WIND/WAVES Summary Plot (Page 1) for 25-NOV-2016, DOY = 330

DAILY 2017-03-21 16:38:42
 Re = 212.95 (200.34, -72.15, -2.44 GSE)



```

RAD2
Antenna Ey .....
Mode LIN(1) .....
SUM/SEP SEP .....
Toggle OFF .....

RAD1
Antenna Ex .....
Mode LIS(2,4) .....
SUM/SEP SUM .....
Toggle OFF .....

TNR
Antenna ExEy .....
Mode A-32 .....
Sweep ACE .....
  
```