

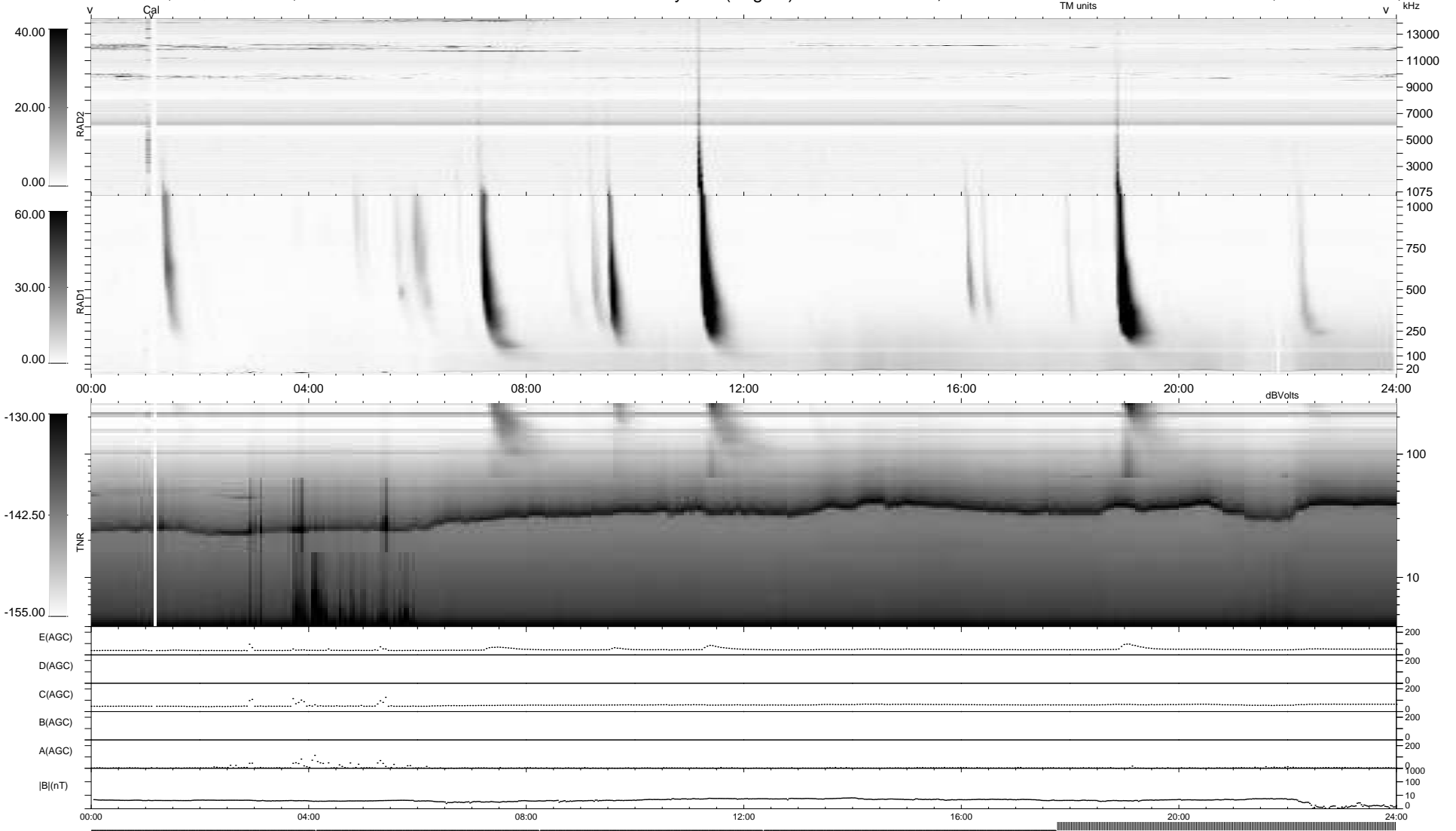
4 bad + 691 good MF/939MF projected (73%) - 244 missing MFs  
 Avg interval = 180 secs  
 Re = 222.04 (203.97, -87.73, 0.88 GSE)

windlib 2.0b

LZ version =

### WIND/WAVES Summary Plot (Page 1) for 19-NOV-2016, DOY = 324

DAILY 2017-03-21 16:35:28  
 Re = 220.77 (203.35, -85.95, 0.41 GSE)



```

RAD2
Antenna Ey .....
Mode LIN(1) .....
SUM/SEP SEP .....
Toggle OFF .....

RAD1
Antenna Ex .....
Mode LIS(2,4) .....
SUM/SEP SUM .....
Toggle OFF .....

TNR
Antenna ExEy .....
Mode A-32 .....
Sweep ACE .....
  
```