

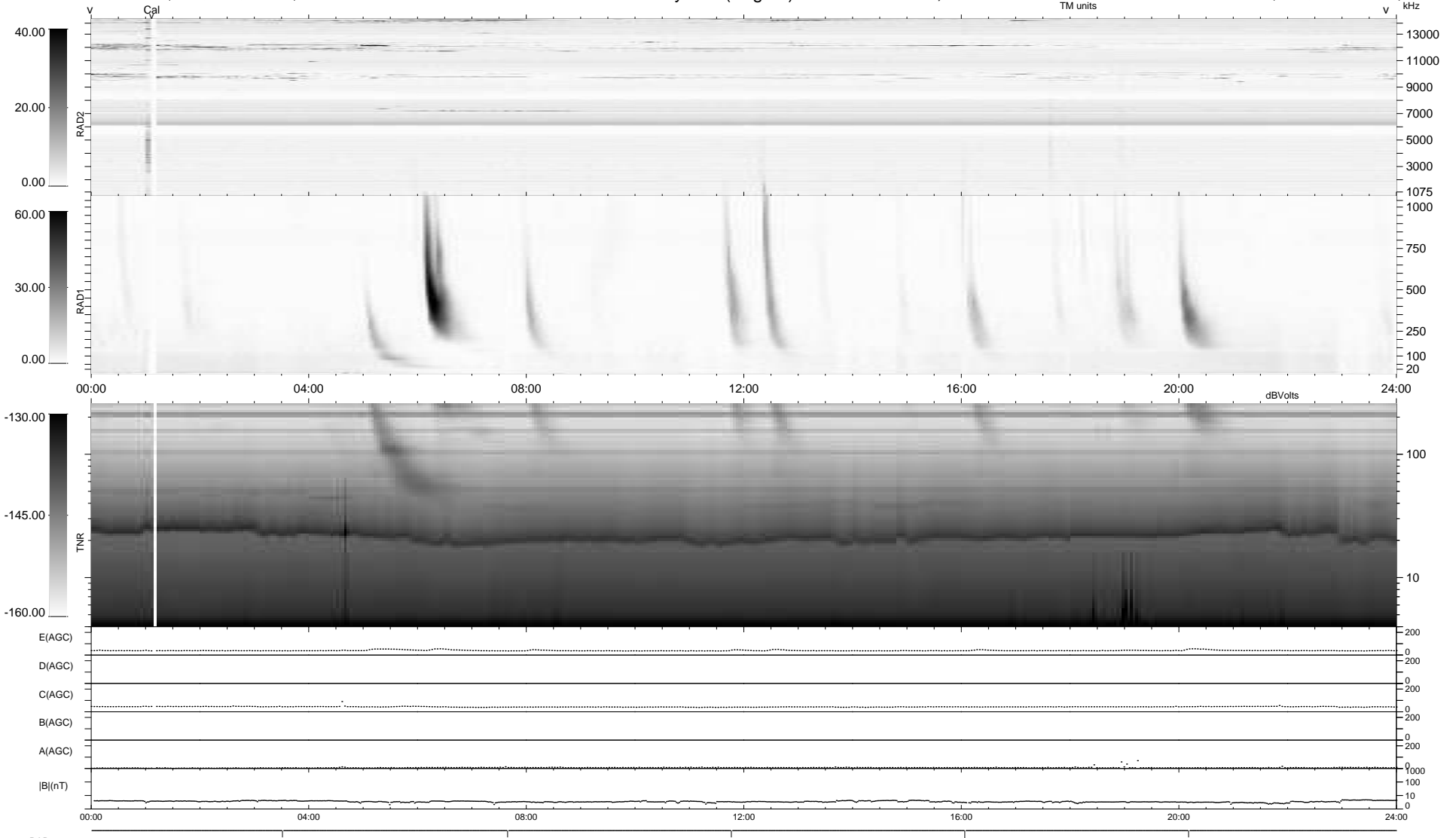
5 bad + 934 good MF/939MF projected (99%) - 0 missing MFs
 Avg interval = 180 secs
 Re = 224.60 (205.39, -90.87, 1.84 GSE)

windlib 2.0b

LZ version =

WIND/WAVES Summary Plot (Page 1) for 17-NOV-2016, DOY = 322

DAILY 2017-03-21 16:34:24
 Re = 223.33 (204.65, -89.38, 1.37 GSE)



```

RAD2
Antenna Ey .....
Mode LIN(1) .....
SUM/SEP SEP .....
Toggle OFF .....

RAD1
Antenna Ex .....
Mode LIS(2,4) .....
SUM/SEP SUM .....
Toggle OFF .....

TNR
Antenna ExEy .....
Mode A-32 .....
Sweep ACE .....
  
```