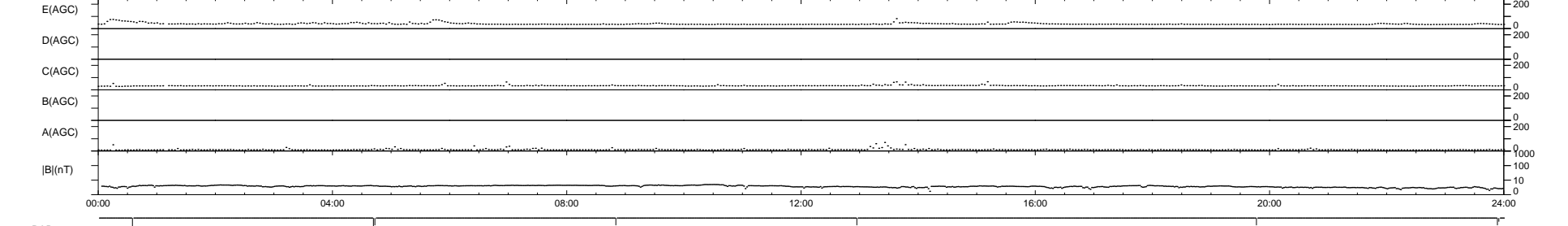
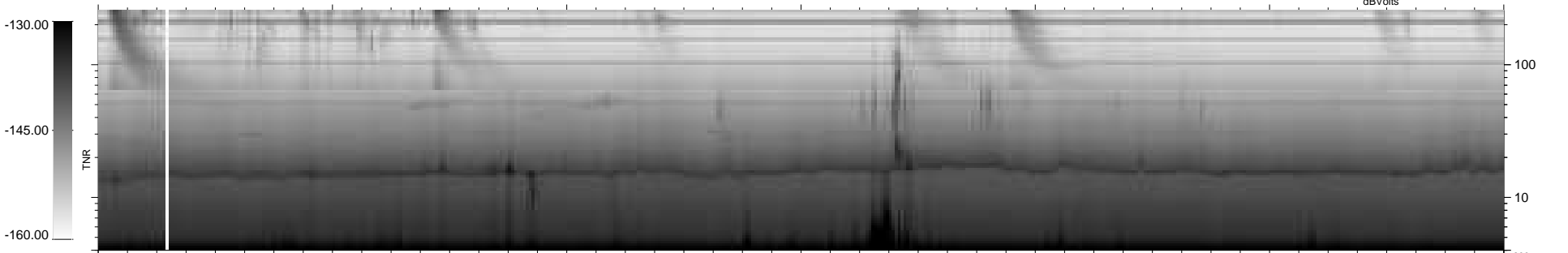
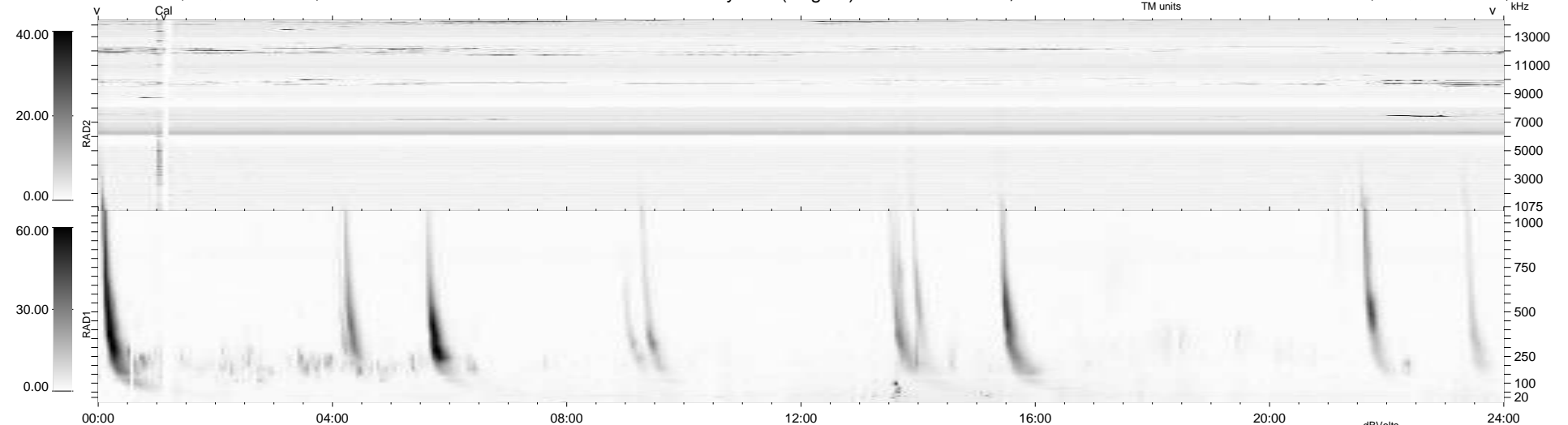


8 bad + 931 good MF/939MF projected (99%) - 0 missing MFs  
 Avg interval = 180 secs  
 Re = 227.19 (207.06, -93.44, 2.81 GSE)

windlib 2.0b LZ version =  
 DAILY 2017-03-21 16:33:17  
 Re = 225.90 (206.20, -92.23, 2.33 GSE)

### WIND/WAVES Summary Plot (Page 1) for 15-NOV-2016, DOY = 320



RAD2  
 Antenna Ey  
 Mode LIN(1)  
 SUM/SEP SEP  
 Toggle OFF

RAD1  
 Antenna Ex  
 Mode LIS(2,4)  
 SUM/SEP SUM  
 Toggle OFF

TNR  
 Antenna ExEy  
 Mode A-32  
 Sweep ACE