

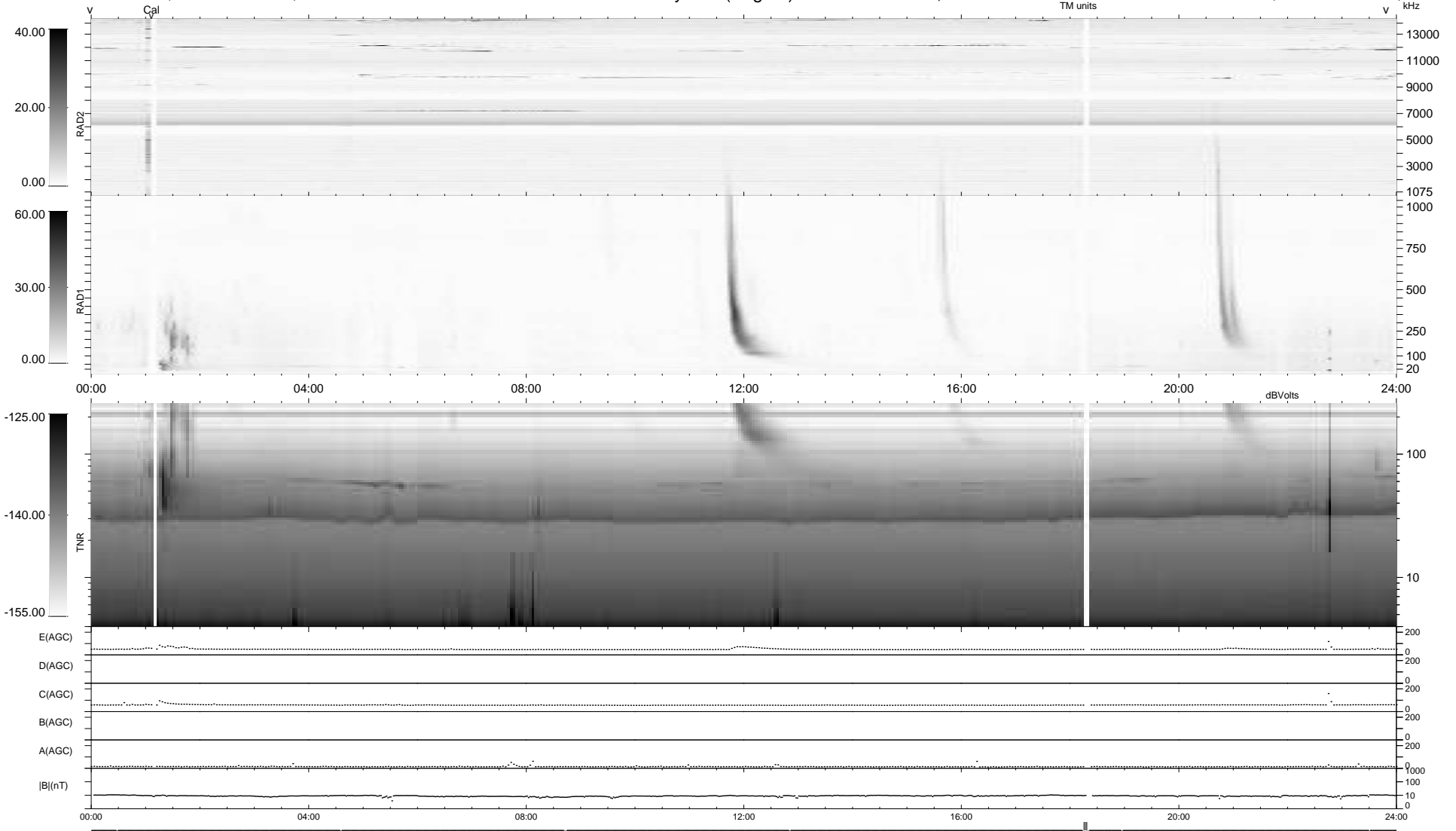
9 bad + 927 good MF/939MF projected (98%) - 3 missing MFs
 Avg interval = 180 secs
 Re = -232.56 (211.25, -97.13, 4.73 GSE)

windlib 2.0b

LZ version =

WIND/WAVES Summary Plot (Page 1) for 11-NOV-2016, DOY = 316

DAILY 2017-03-21 16:31:01
 Re = 231.21 (210.12, -96.38, 4.26 GSE)



RAD2
 Antenna Ey
 Mode LIN(1)
 SUM/SEP SEP
 Toggle OFF

RAD1
 Antenna Ex
 Mode LIS(2,4)
 SUM/SEP SUM
 Toggle OFF

TNR
 Antenna ExEy
 Mode A-32
 Sweep ACE