

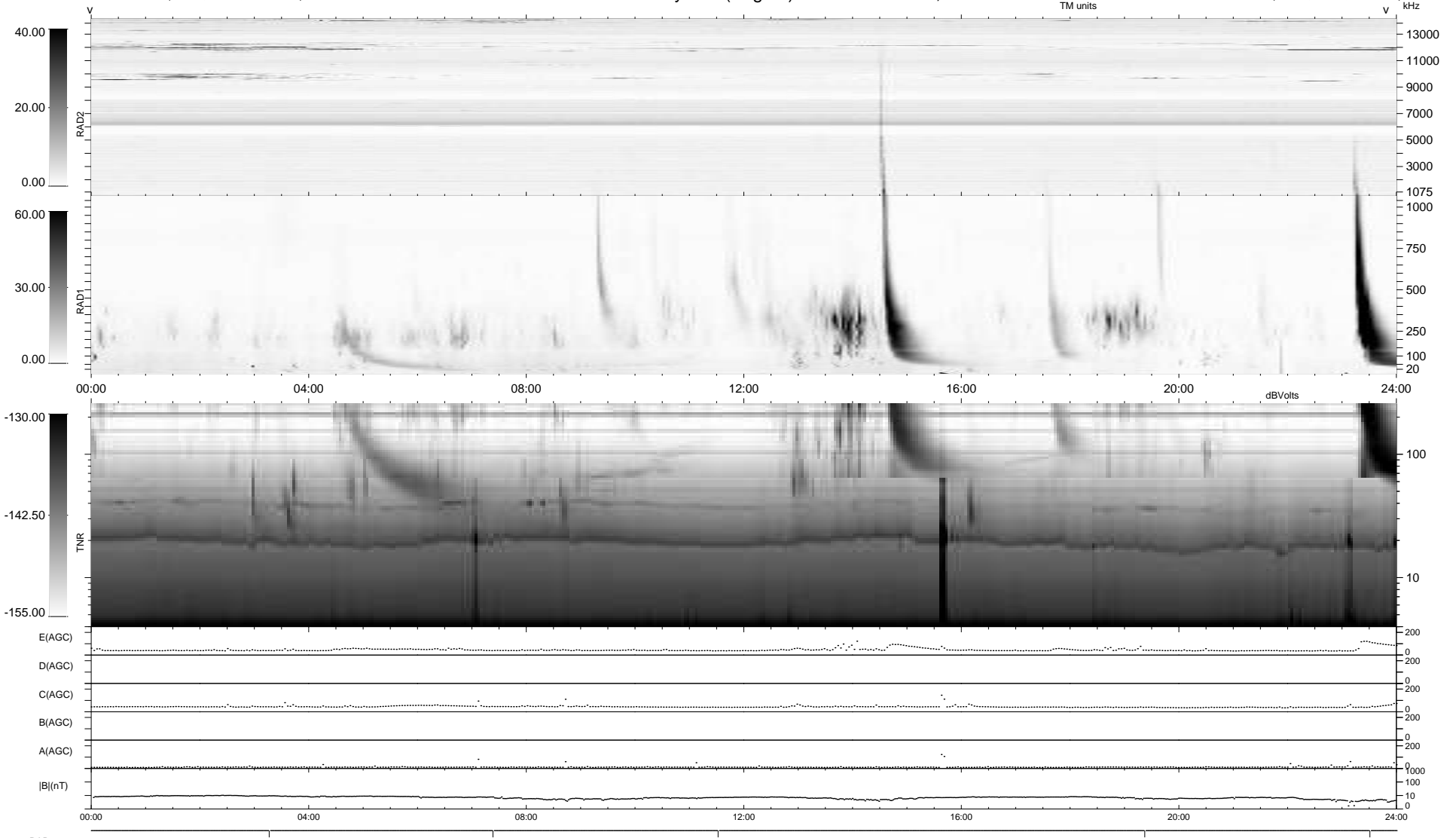
5 bad + 935 good MF/940MF projected (99%) - 0 missing MFs
 Avg interval = 180 secs
 Re = 248.51 (228.12, -98.08, 10.13 GSE)

windlib 2.0b

LZ version =

WIND/WAVES Summary Plot (Page 1) for 29-OCT-2016, DOY = 303

DAILY 2017-03-21 16:22:25
 Re = 247.58 (226.86, -98.66, 9.78 GSE)



RAD2
 Antenna Ey
 Mode LIN(1)
 SUM/SEP SEP
 Toggle OFF
 RAD1
 Antenna Ex
 Mode LIS(2,4)
 SUM/SEP SUM
 Toggle OFF
 TNR
 Antenna ExEy
 Mode A-32
 Sweep ACE