

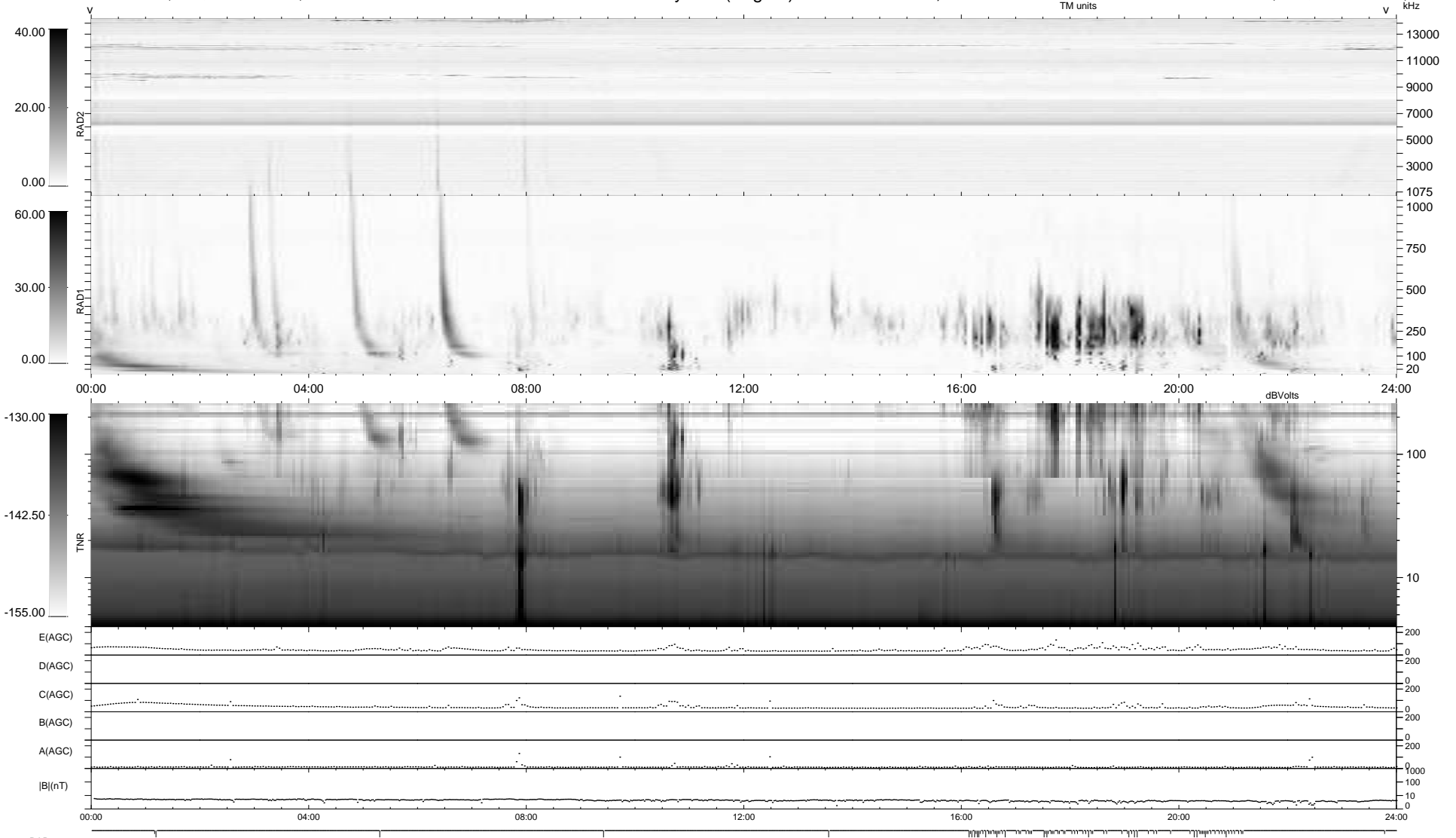
86 bad + 853 good MF/939MF projected (90%) - 0 missing MFs
 Avg interval = 180 secs
 Re = -255.54 (242.17, -80.45, 13.38 GSE)

windlib 2.0b

LZ version =

WIND/WAVES Summary Plot (Page 1) for 17-OCT-2016, DOY = 291

DAILY 2017-03-21 16:16:01
 Re = 255.12 (241.01, -82.64, 13.16 GSE)



RAD2
 Antenna Ey
 Mode LIN(1)
 SUM/SEP SEP
 Toggle OFF

RAD1
 Antenna Ex
 Mode LIS(2,4)
 SUM/SEP SUM
 Toggle OFF

TNR
 Antenna ExEy
 Mode A-32
 Sweep ACE