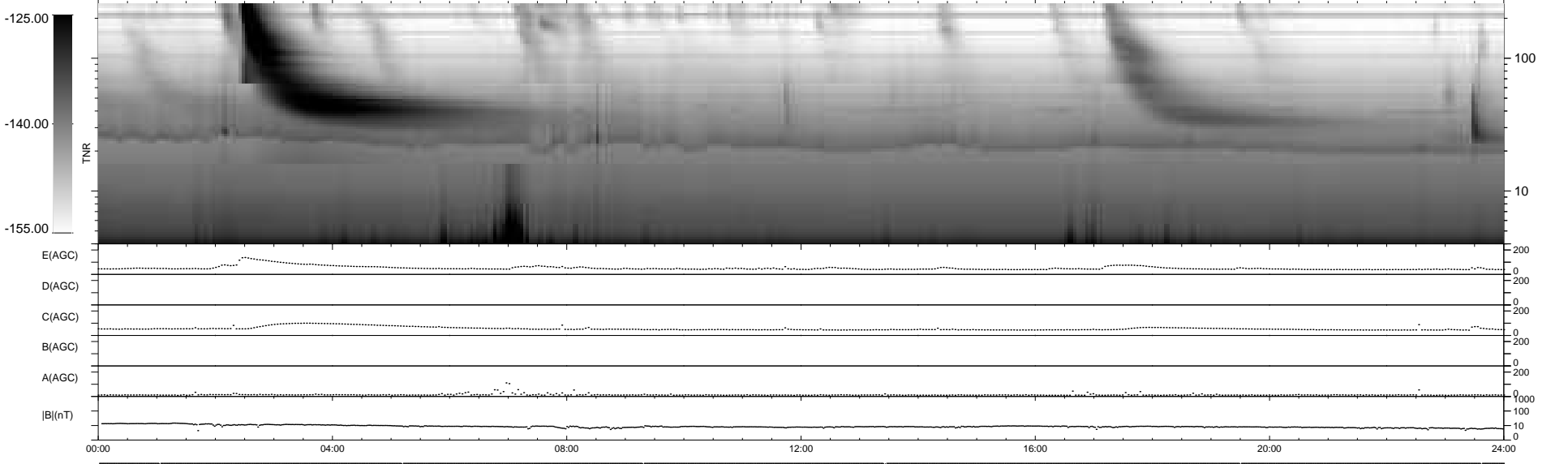
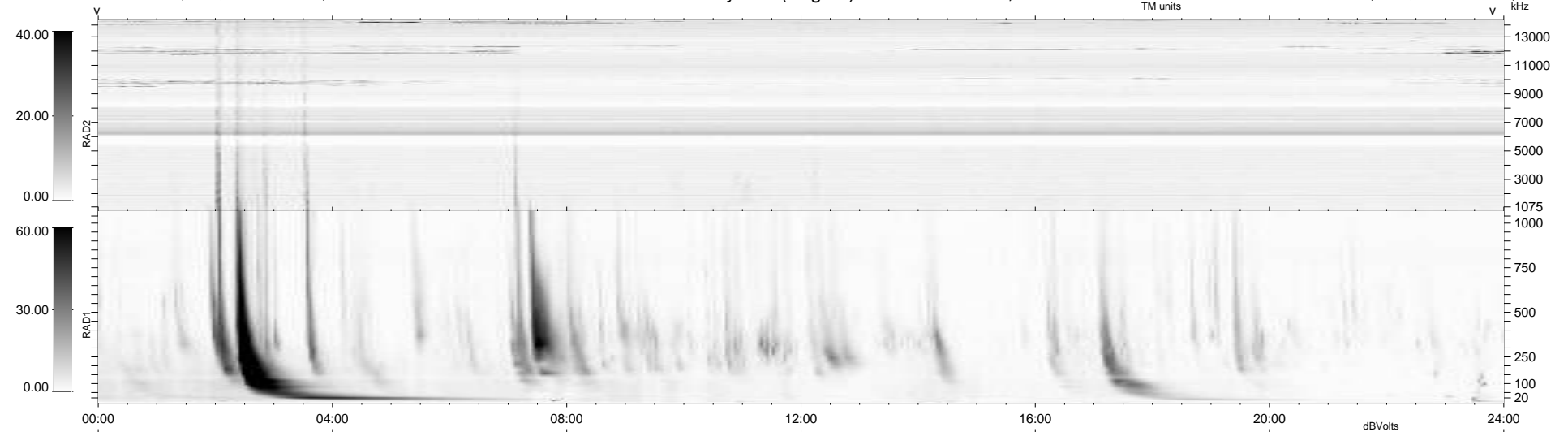


7 bad + 932 good MF/939MF projected (99%) - 0 missing MFs
 Avg interval = 180 secs
 Re = 256.40 (244.57, -75.76, 13.78 GSE)

windlib 2.0b LZ version =
 DAILY 2017-03-21 16:14:50
 Re = 255.97 (243.37, -78.14, 13.59 GSE)

WIND/WAVES Summary Plot (Page 1) for 15-OCT-2016, DOY = 289



```

RAD2
Antenna Ey .....
Mode LIN(1) .....
SUM/SEP SEP .....
Toggle OFF .....

RAD1
Antenna Ex .....
Mode LIS(2,4) .....
SUM/SEP SUM .....
Toggle OFF .....

TNR
Antenna ExEy .....
Mode A-32 .....
Sweep ACE .....
  
```