

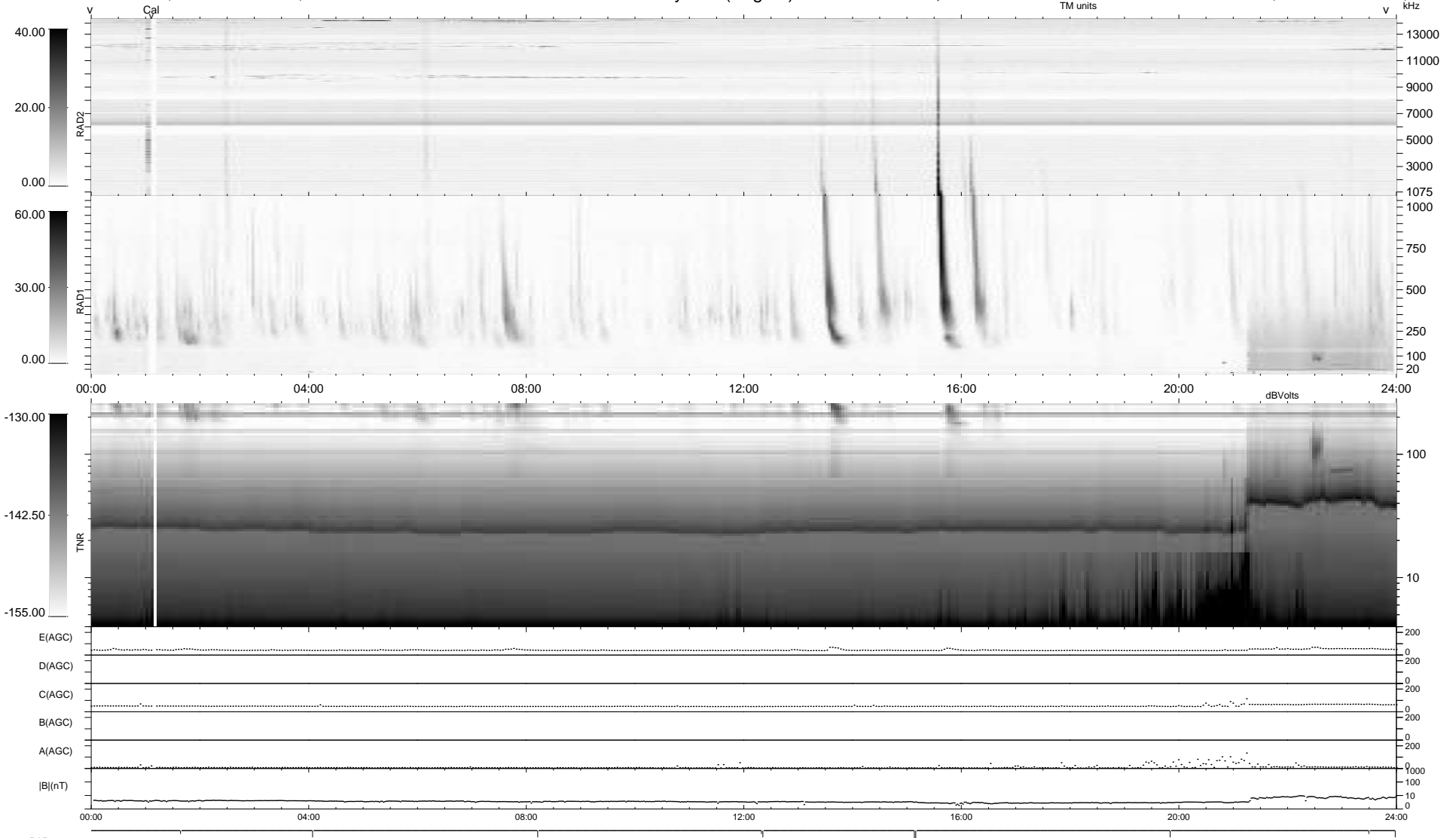
10 bad + 929 good MF/939MF projected (98%) - 0 missing MFs  
 Avg interval = 180 secs  
 Re = 257.80 (248.22, -68.14, 14.29 GSE)

windlib 2.0b

LZ version =

### WIND/WAVES Summary Plot (Page 1) for 12-OCT-2016, DOY = 286

DAILY 2017-03-21 16:12:47  
 Re = 257.32 (247.01, -70.72, 14.13 GSE)



RAD2  
 Antenna Ey .....  
 Mode LIN(1) .....  
 SUM/SEP SEP .....  
 Toggle OFF .....  
 RAD1  
 Antenna Ex .....  
 Mode LIS(2,4) .....  
 SUM/SEP SUM .....  
 Toggle OFF .....  
 TNR  
 Antenna ExEy .....  
 Mode A-32 .....  
 Sweep ACE .....