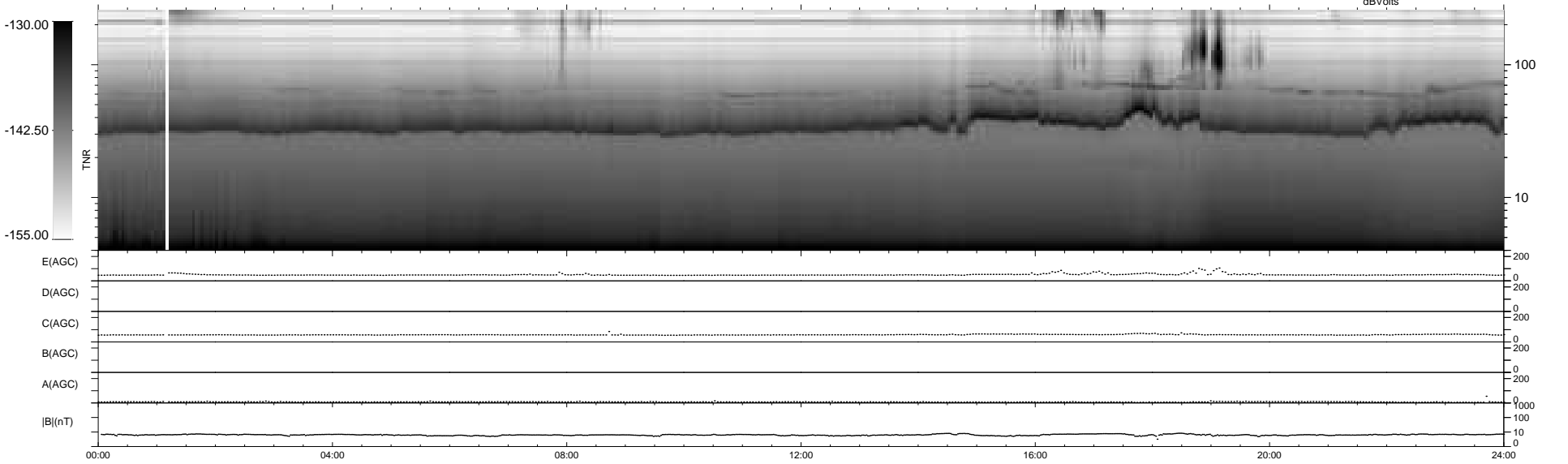
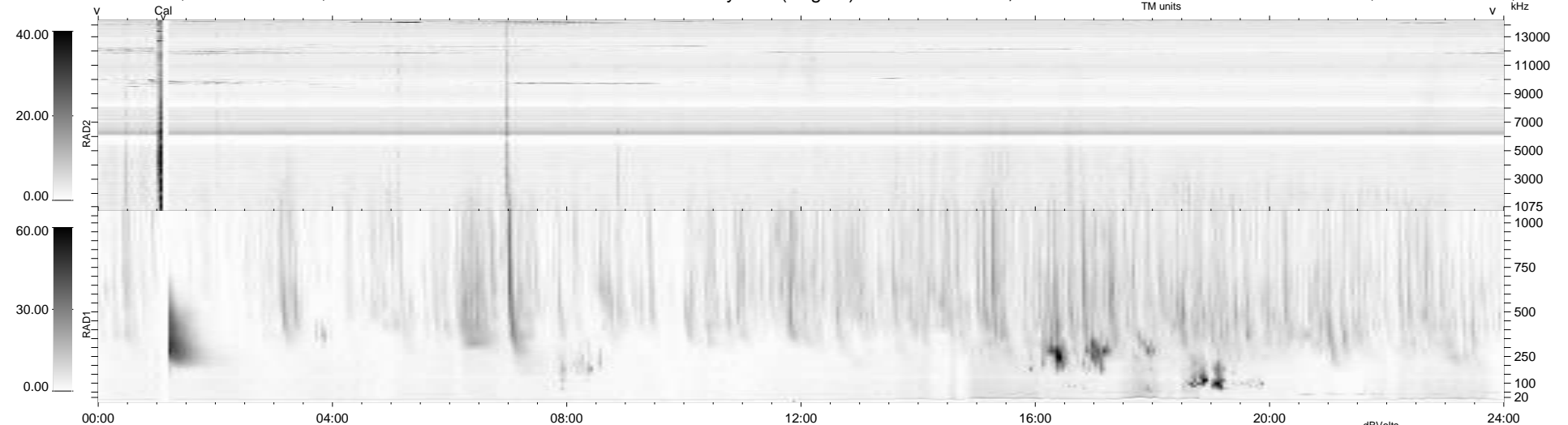


7 bad + 932 good MF/939MF projected (99%) - 0 missing MFs  
 Avg interval = 180 secs  
 Re = 258.75 (250.60, -62.78, 14.55 GSE)

windlib 2.0b LZ version =  
 DAILY 2017-03-21 16:11:43  
 Re = 258.28 (249.43, -65.46, 14.43 GSE)

### WIND/WAVES Summary Plot (Page 1) for 10-OCT-2016, DOY = 284



RAD2  
 Antenna Ey .....  
 Mode LIN(1) .....  
 SUM/SEP SEP .....  
 Toggle OFF .....  
 RAD1  
 Antenna Ex .....  
 Mode LIS(2,4) .....  
 SUM/SEP SUM .....  
 Toggle OFF .....  
 TNR  
 Antenna ExEy .....  
 Mode A-32 .....  
 Sweep ACE .....