

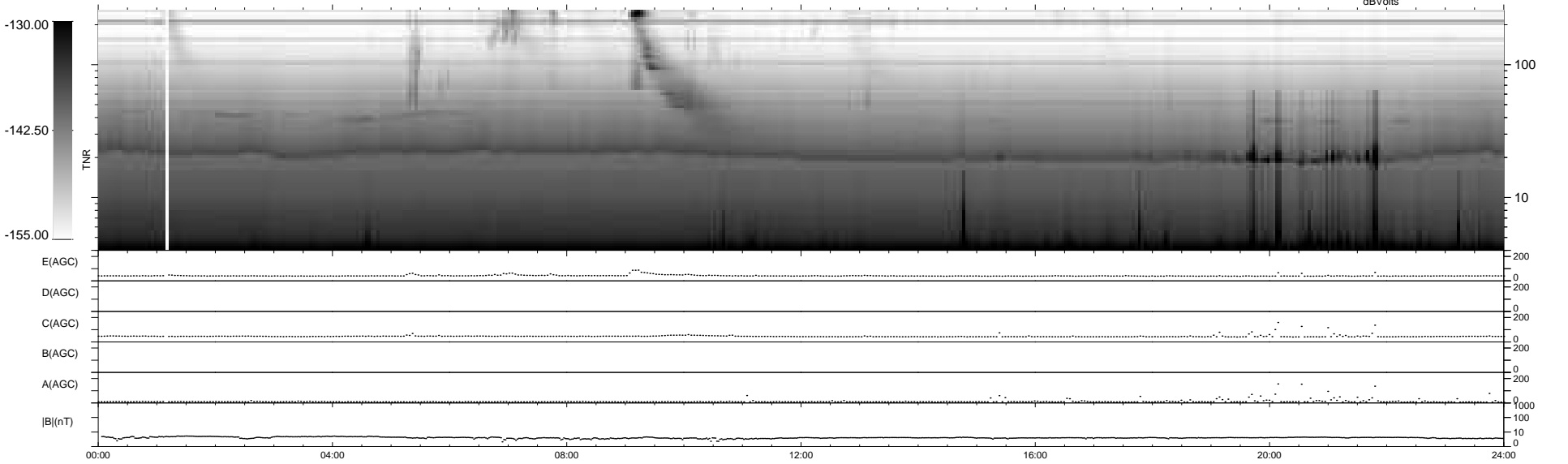
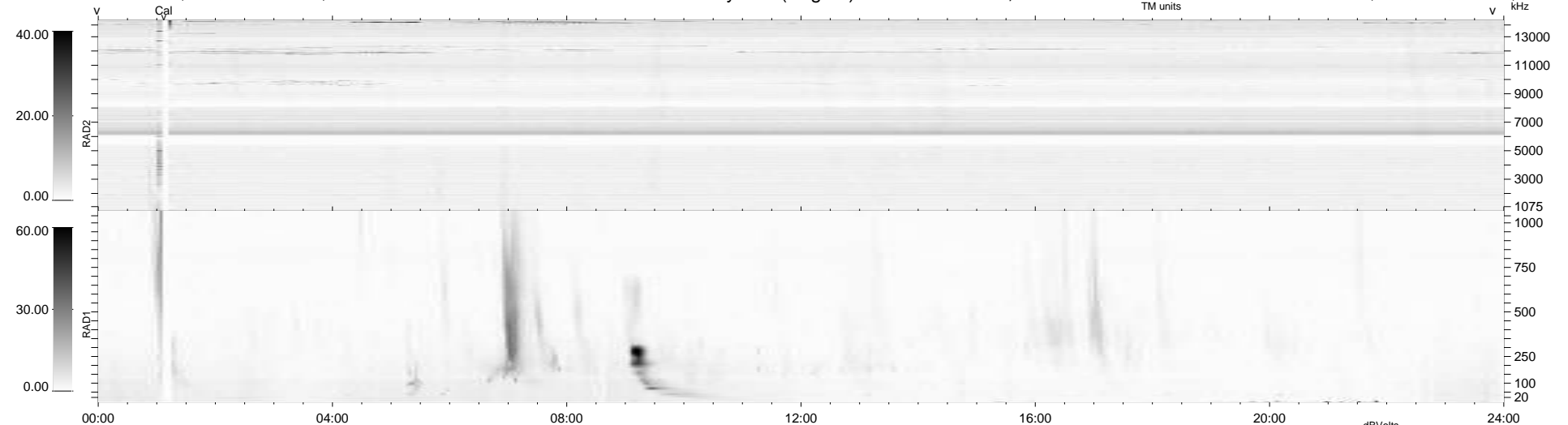
7 bad + 932 good MF/939MF projected (99%) - 0 missing MFs
 Avg interval = 180 secs
 Re = 259.68 (252.86, -57.24, 14.75 GSE)

windlib 2.0b

LZ version =

WIND/WAVES Summary Plot (Page 1) for 08-OCT-2016, DOY = 282

DAILY 2017-03-21 16:10:35
 Re = 259.23 (251.76, -60.01, 14.66 GSE)



```

RAD2
Antenna Ey .....
Mode LIN(1) .....
SUM/SEP SEP .....
Toggle OFF .....

RAD1
Antenna Ex .....
Mode LIS(2,4) .....
SUM/SEP SUM .....
Toggle OFF .....

TNR
Antenna ExEy .....
Mode A-32 .....
Sweep ACE .....
  
```