

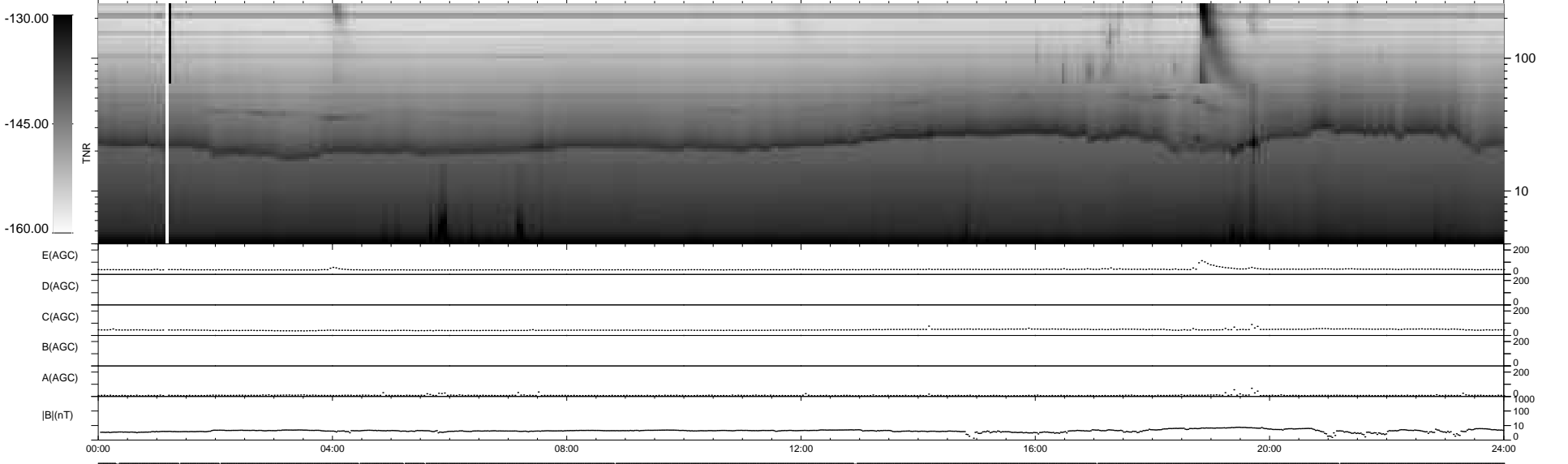
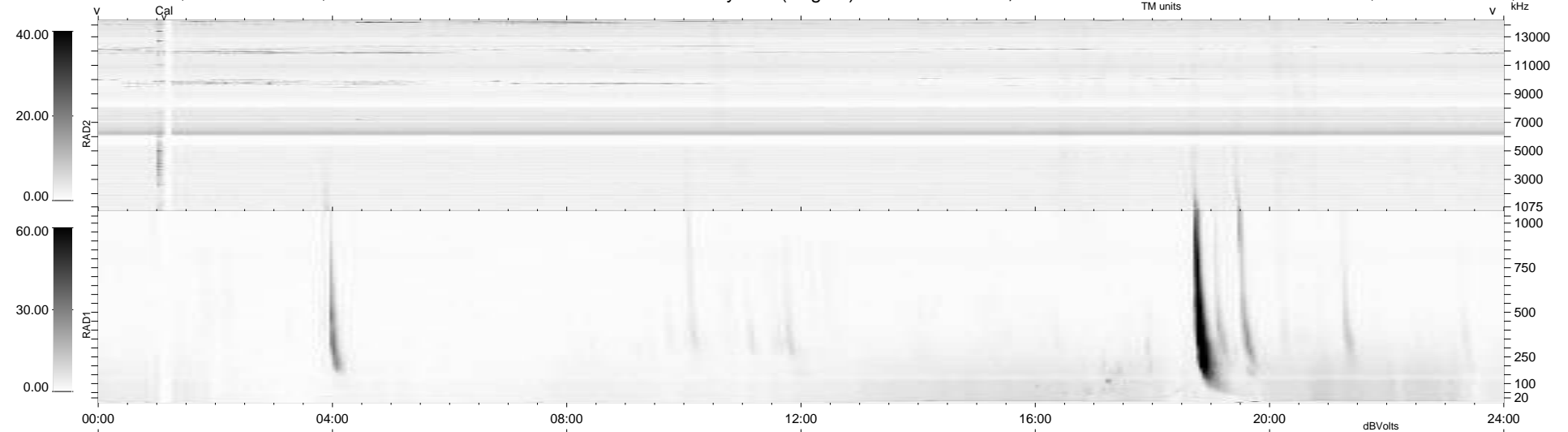
12 bad + 928 good MF/940MF projected (98%) - 0 missing MFs
 Avg interval = 180 secs
 Re = 260.53 (254.95, -51.55, 14.88 GSE)

windlib 2.0b

LZ version =

WIND/WAVES Summary Plot (Page 1) for 06-OCT-2016, DOY = 280

DAILY 2017-03-21 16:09:32
 Re = 260.12 (253.94, -54.39, 14.83 GSE)



```

RAD2
Antenna Ey .....
Mode LIN(1) .....
SUM/SEP SEP .....
Toggle OFF .....

RAD1
Antenna Ex .....
Mode LIS(2,4) .....
SUM/SEP SUM .....
Toggle OFF .....

TNR
Antenna ExEy .....
Mode A-32 .....
Sweep ACE .....
  
```