

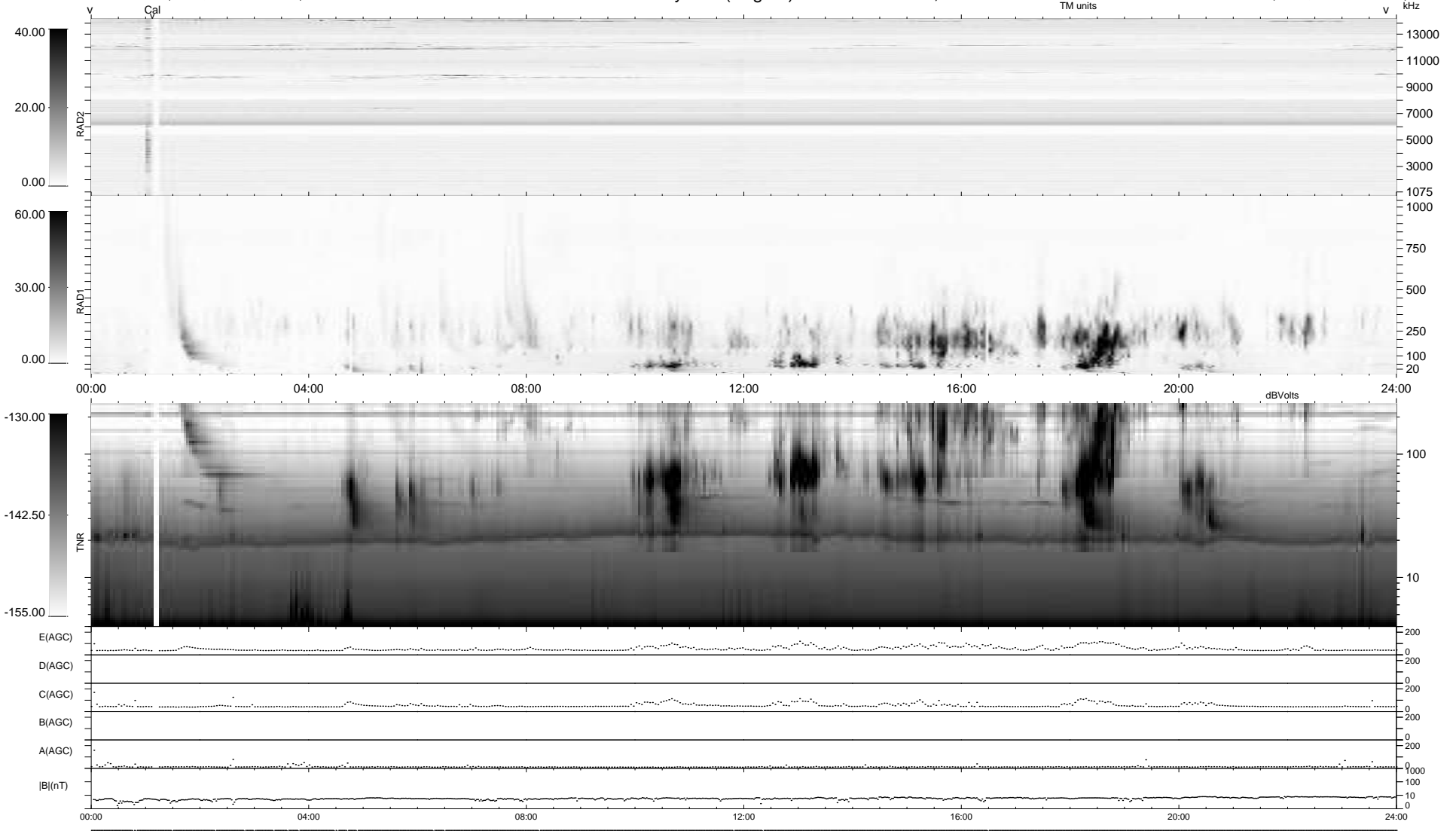
19 bad + 921 good MF/940MF projected (97%) - 0 missing MFs
 Avg interval = 180 secs
 Re = 262.41 (260.59, -27.15, 14.73 GSE)

windlib 2.0b

LZ version =

WIND/WAVES Summary Plot (Page 1) for 28-SEP-2016, DOY = 272

DAILY 2017-03-21 16:04:45
 Re = 262.33 (260.15, -30.33, 14.80 GSE)



RAD2
 Antenna Ey
 Mode LIN(1)
 SUM/SEP SEP
 Toggle OFF
 RAD1
 Antenna Ex
 Mode LIS(2,4)
 SUM/SEP SUM
 Toggle OFF
 TNR
 Antenna ExEy
 Mode A-32
 Sweep ACE