

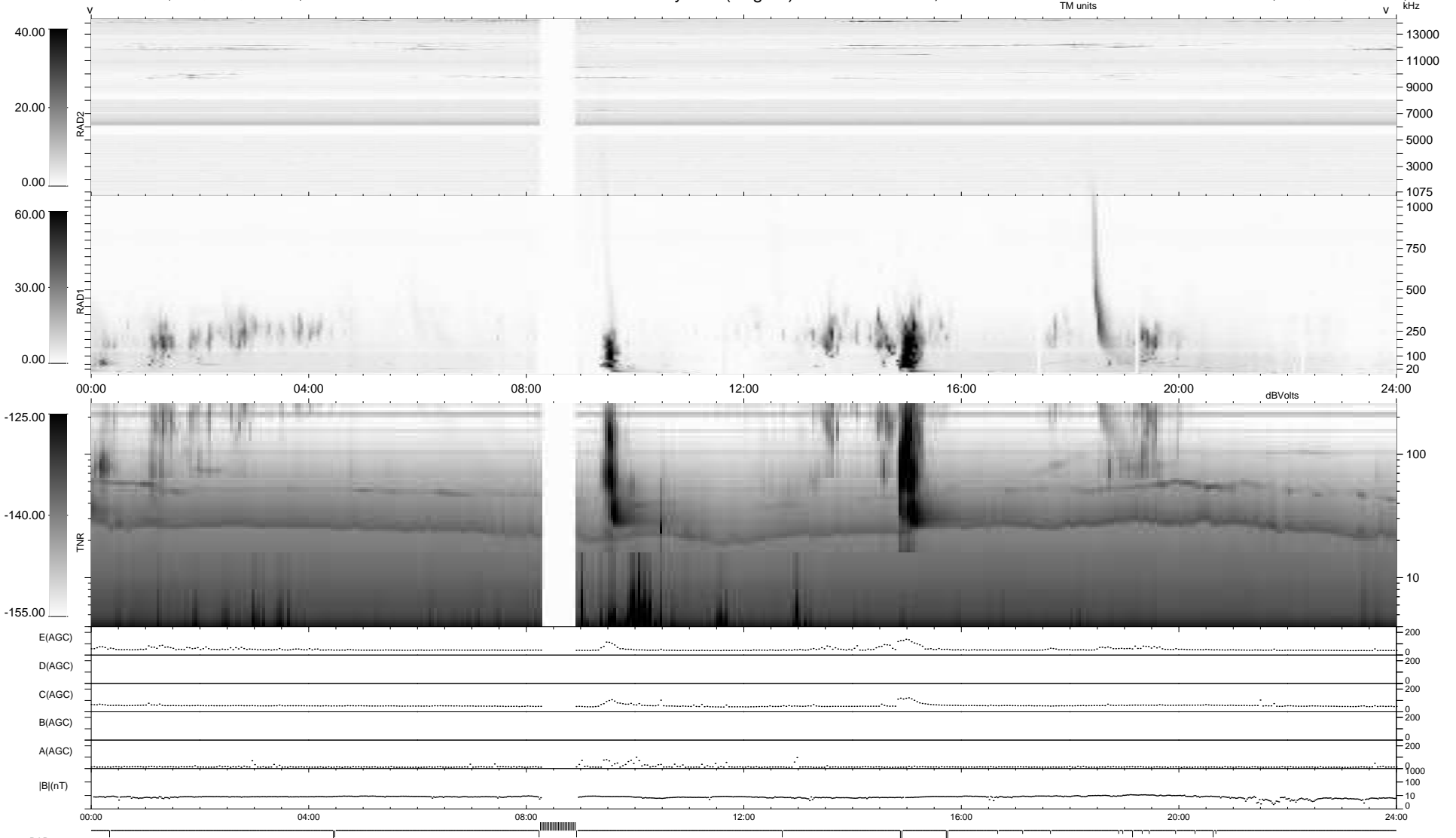
22 bad + 891 good MF/939MF projected (94%) - 26 missing MFs
 Avg interval = 180 secs
 Re = -262.45 (260.94, -23.90, 14.64 GSE)

windlib 2.0b

LZ version =

WIND/WAVES Summary Plot (Page 1) for 27-SEP-2016, DOY = 271

DAILY 2017-03-21 16:04:36
 Re = 262.41 (260.59, -27.13, 14.73 GSE)



RAD2
 Antenna Ey
 Mode LIN(1)
 SUM/SEP SEP
 Toggle OFF

RAD1
 Antenna Ex
 Mode LIS(2,4)
 SUM/SEP SUM
 Toggle OFF

TNR
 Antenna ExEy
 Mode A-32
 Sweep ACE