

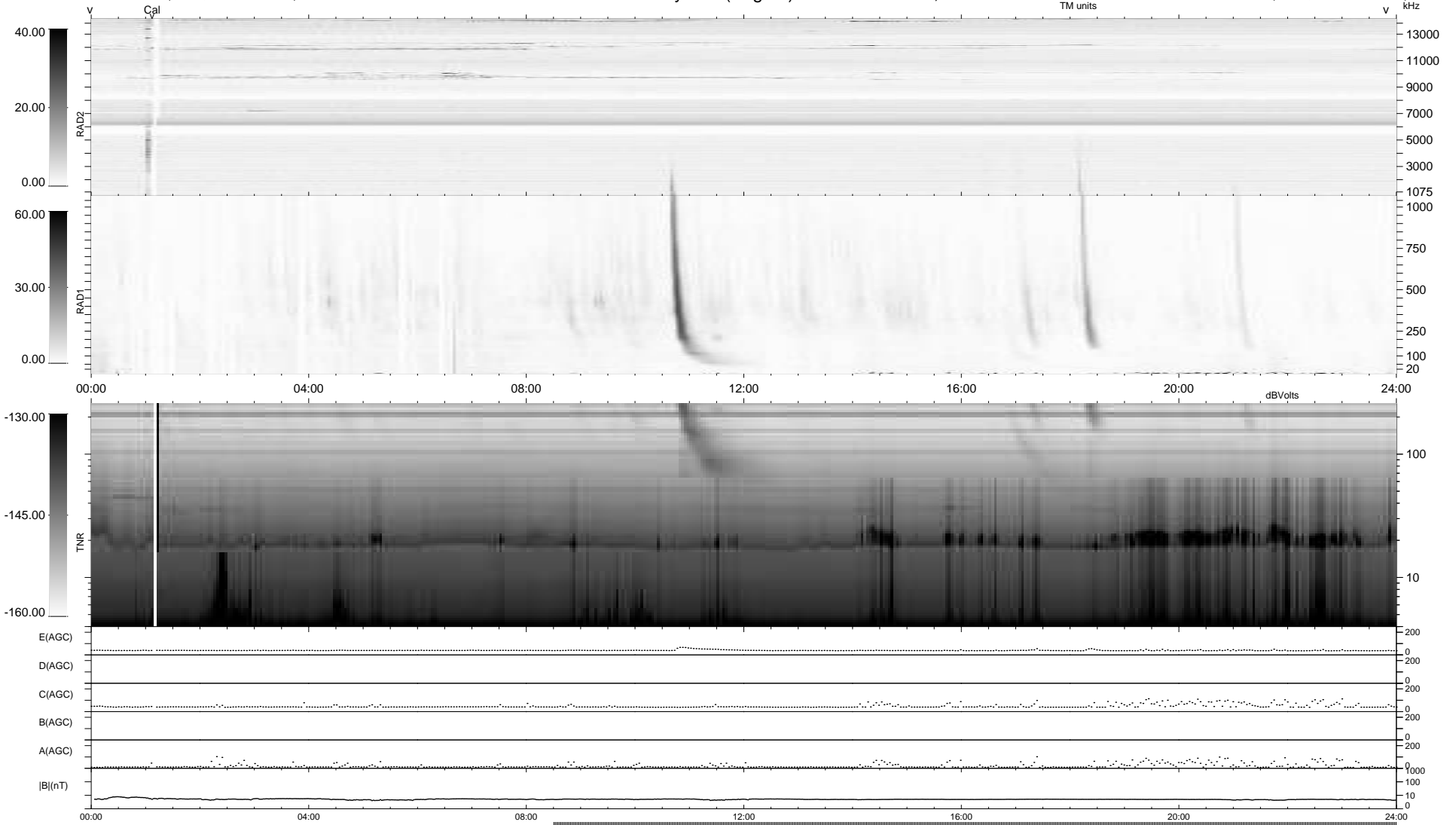
47 bad + 285 good MF/939MF projected (30%) - 607 missing MFs
 Avg interval = 180 secs
 Re = -262.18 (261.72, -6.89, 14.04 GSE)

windlib 2.0b

LZ version =

WIND/WAVES Summary Plot (Page 1) for 22-SEP-2016, DOY = 266

DAILY 2017-03-21 16:01:31
 Re = 262.27 (261.68, -10.37, 14.18 GSE)



RAD2 Antenna Ey
 Mode LIN(1)
 SUM/SEP SEP
 Toggle OFF
 RAD1 Antenna Ex
 Mode LIS(2,4)
 SUM/SEP SUM
 Toggle OFF
 TNR Antenna ExEy
 Mode A-32
 Sweep ACE