

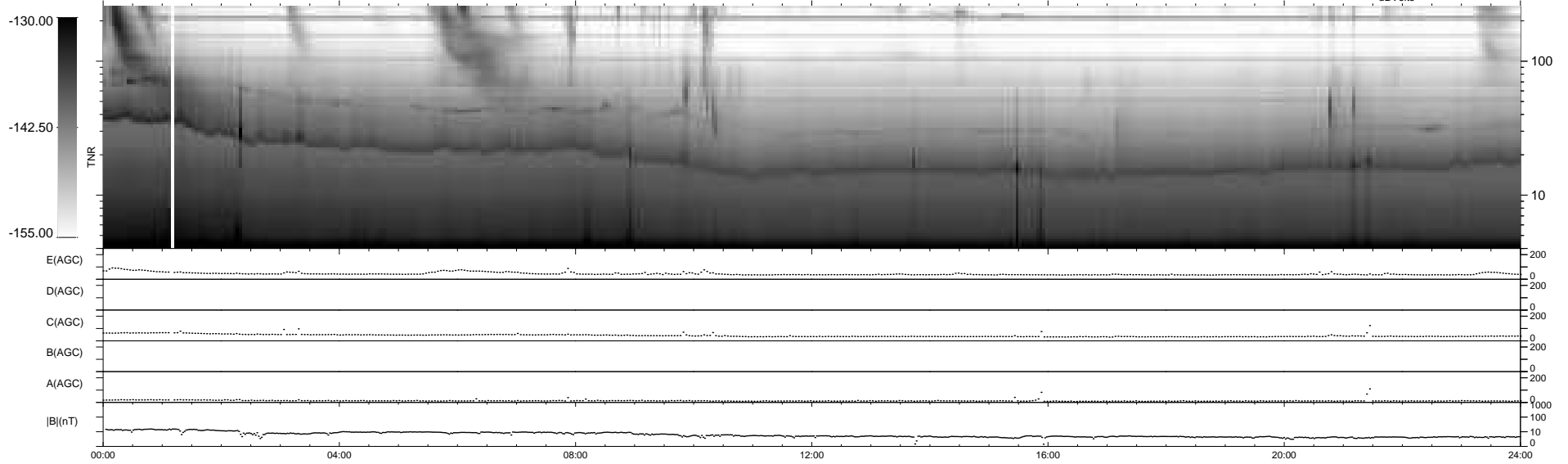
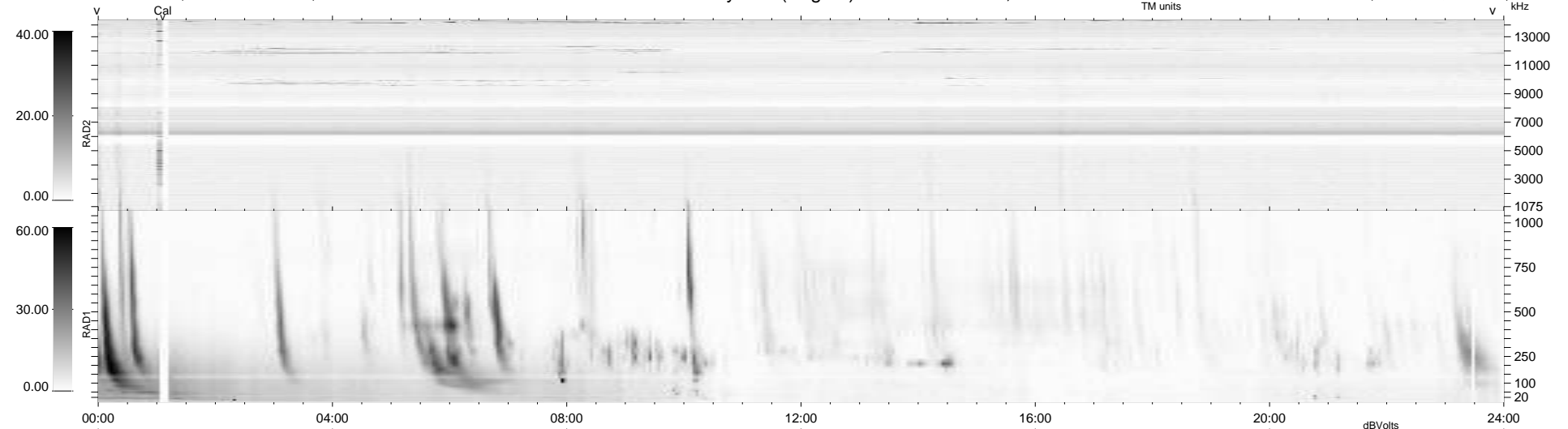
29 bad + 910 good MF/939MF projected (96%) - 0 missing MFs
 Avg interval = 180 secs
 Re = -262.03 (261.67, 0.23, 13.72 GSE)

windlib 2.0b

LZ version =

WIND/WAVES Summary Plot (Page 1) for 20-SEP-2016, DOY = 264

DAILY 2017-03-21 16:00:27
 Re = 262.10 (261.71, -3.33, 13.88 GSE)



```

RAD2
Antenna Ey .....
Mode LIN(1) .....
SUM/SEP SEP .....
Toggle OFF .....

RAD1
Antenna Ex .....
Mode LIS(2,4) .....
SUM/SEP SUM .....
Toggle OFF .....

TNR
Antenna ExEy .....
Mode A-32 .....
Sweep ACE .....
  
```