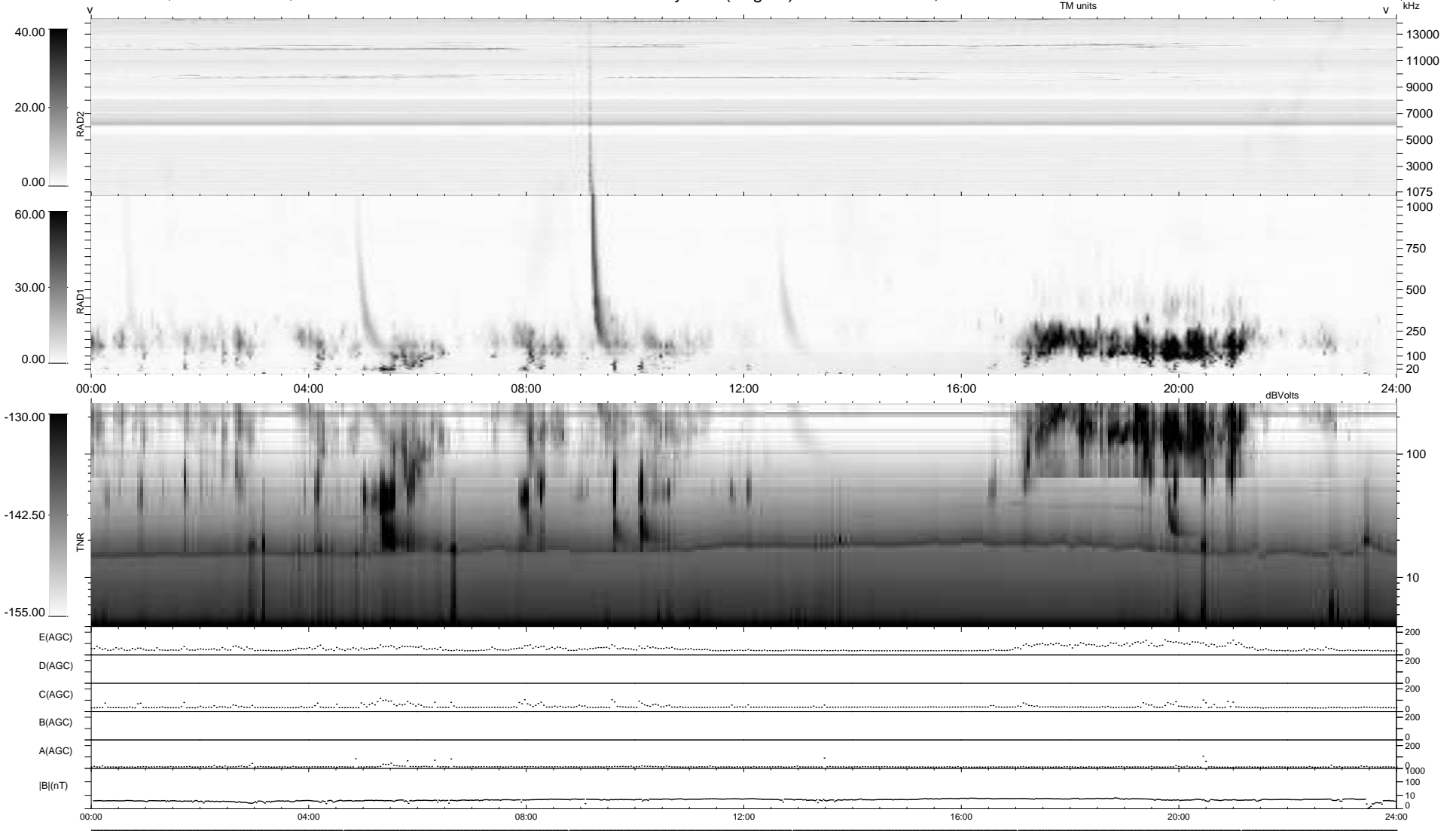


5 bad + 935 good MF/940MF projected (99%) - 0 missing MFs  
 Avg interval = 180 secs  
 Re = -262.91 (257.75, 50.89, 9.87 GSE)

windlib 2.0b LZ version =  
 DAILY 2017-03-21 15:52:18  
 Re = 262.93 (258.31, 47.98, 10.21 GSE)

### WIND/WAVES Summary Plot (Page 1) for 05-SEP-2016, DOY = 249



RAD2  
 Antenna Ey .....  
 Mode LIN(1) .....  
 SUM/SEP SEP .....  
 Toggle OFF .....  
 RAD1  
 Antenna Ex .....  
 Mode LIS(2,4) .....  
 SUM/SEP SUM .....  
 Toggle OFF .....  
 TNR  
 Antenna ExEy .....  
 Mode A-32 .....  
 Sweep ACE .....