

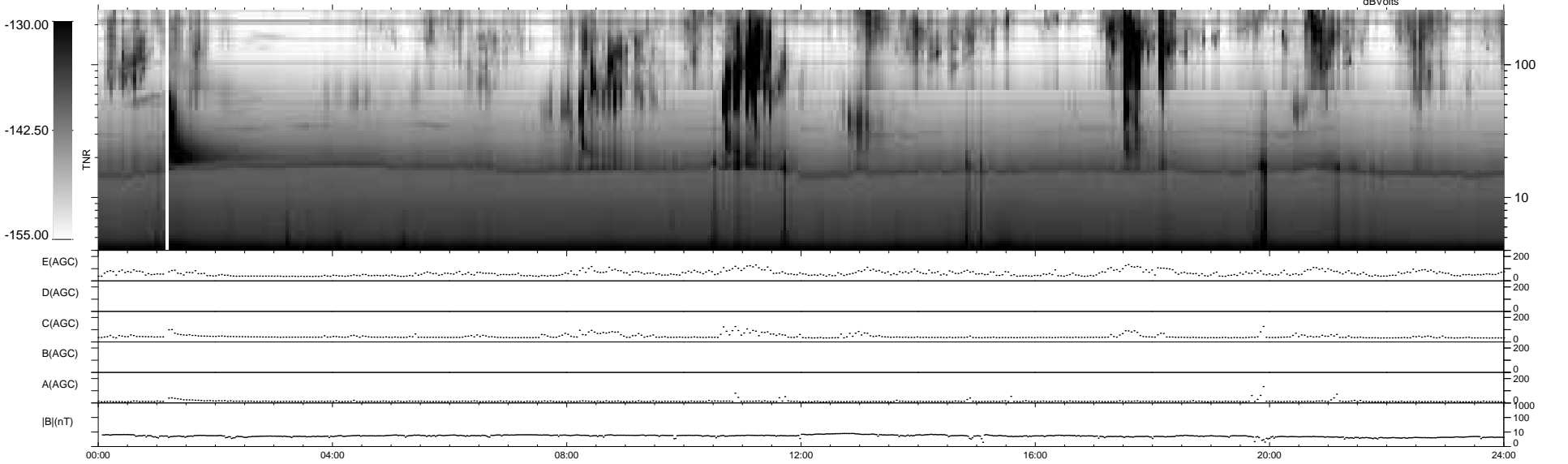
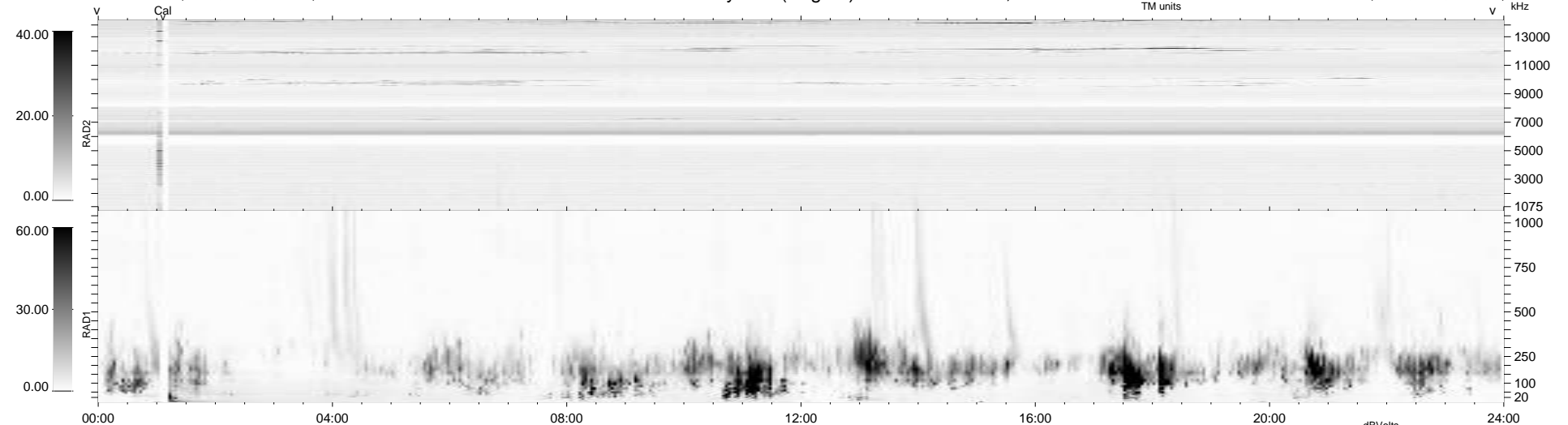
8 bad + 931 good MF/939MF projected (99%) - 0 missing MFs
Avg interval = 180 secs
Re = -262.84 (257.11, 53.75, 9.51 GSE)

windlib 2.0b

LZ version =

WIND/WAVES Summary Plot (Page 1) for 04-SEP-2016, DOY = 248

DAILY 2017-03-21 15:51:27
Re = 262.91 (257.74, 50.91, 9.86 GSE)



RAD2
Antenna Ey
Mode LIN(1)
SUM/SEP SEP
Toggle OFF
RAD1
Antenna Ex
Mode LIS(2,4)
SUM/SEP SUM
Toggle OFF
TNR
Antenna ExEy
Mode A-32
Sweep ACE