

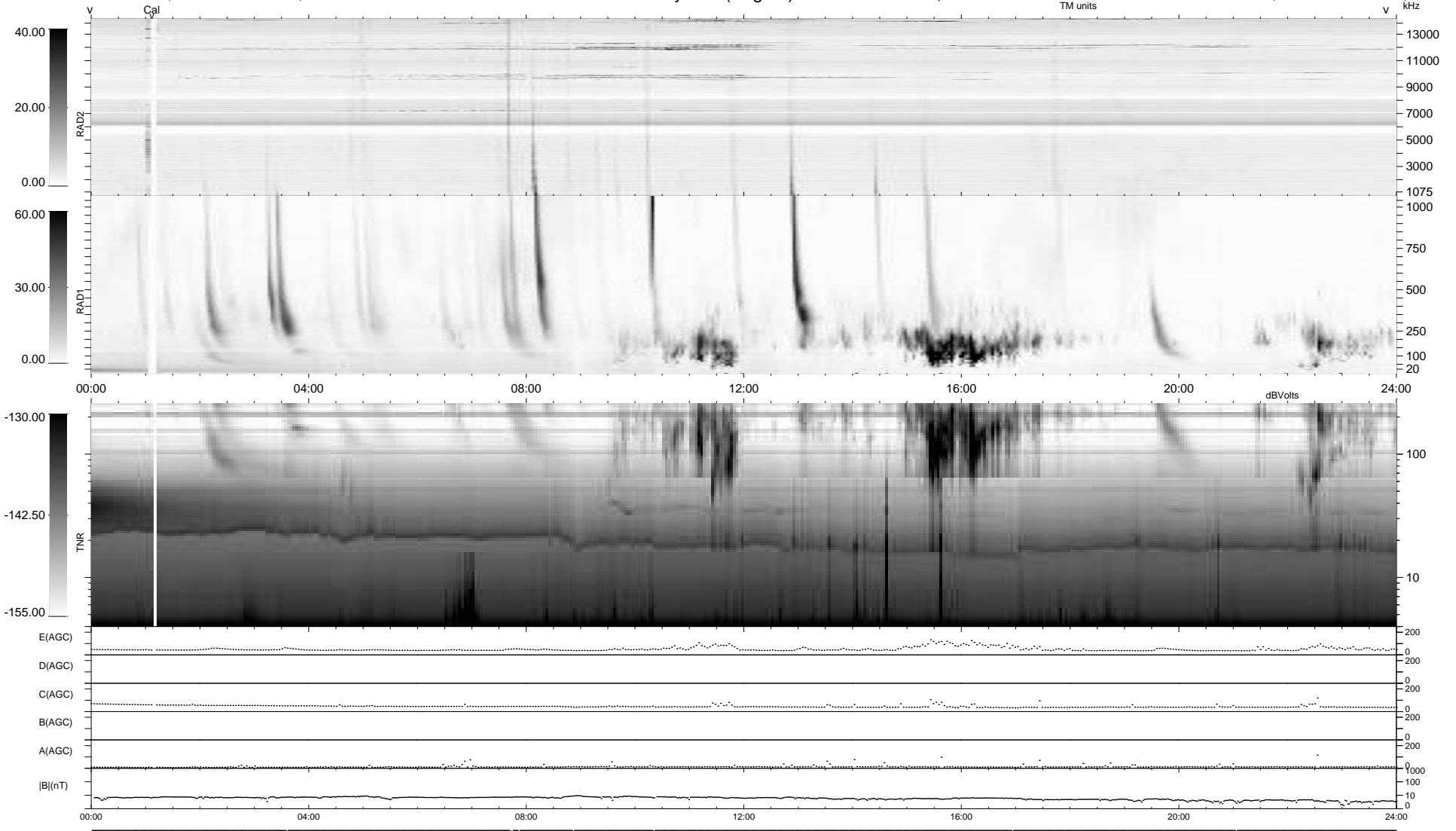
8 bad + 931 good MF/939MF projected (99%) - 0 missing MFs
 Avg interval = 180 secs
 Re = -250.70 (229.10, 101.77, -1.60 GSE)

windlib 2.0b

LZ version =

WIND/WAVES Summary Plot (Page 1) for 09-AUG-2016, DOY = 222

DAILY 2017-03-21 15:35:48
 Re = 251.42 (230.12, 101.27, -1.13 GSE)



RAD2
 Antenna Ey
 Mode LIN(1)
 SUM/SEP SEP
 Toggle OFF
 RAD1
 Antenna Ex
 Mode LIS(2,4)
 SUM/SEP SUM
 Toggle OFF
 TNR
 Antenna ExEy
 Mode A-32
 Sweep ACE