

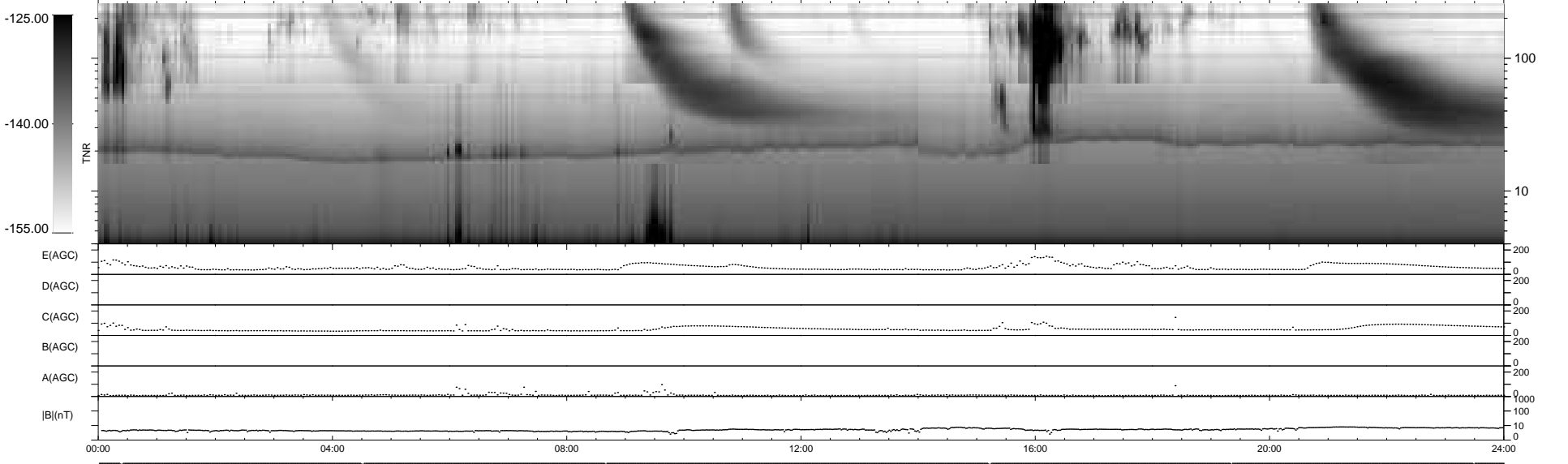
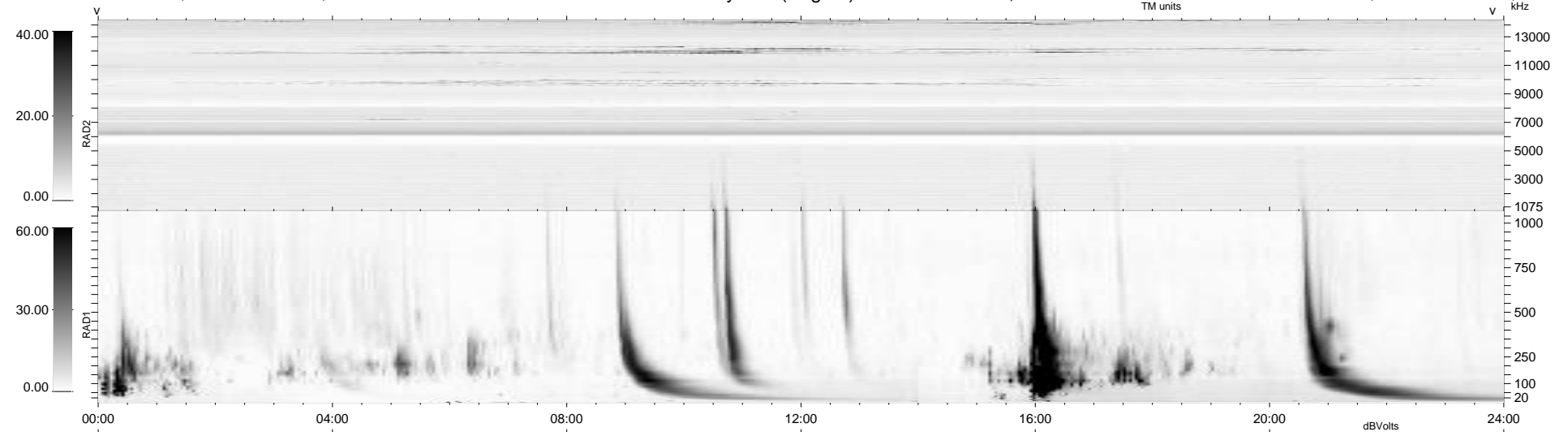
9 bad + 930 good MF/939MF projected (99%) - 0 missing MFs
 Avg interval = 180 secs
 Re = 249.92 (228.09, 102.14, -2.06 GSE)

windlib 2.0b

LZ version =

WIND/WAVES Summary Plot (Page 1) for 08-AUG-2016, DOY = 221

DAILY 2017-03-21 15:34:45
 Re = 250.69 (229.10, 101.78, -1.60 GSE)



RAD2
 Antenna Ey
 Mode LIN(1)
 SUM/SEP SEP
 Toggle OFF

RAD1
 Antenna Ex
 Mode LIS(2,4)
 SUM/SEP SUM
 Toggle OFF

TNR
 Antenna ExEy
 Mode A-32
 Sweep ACE