

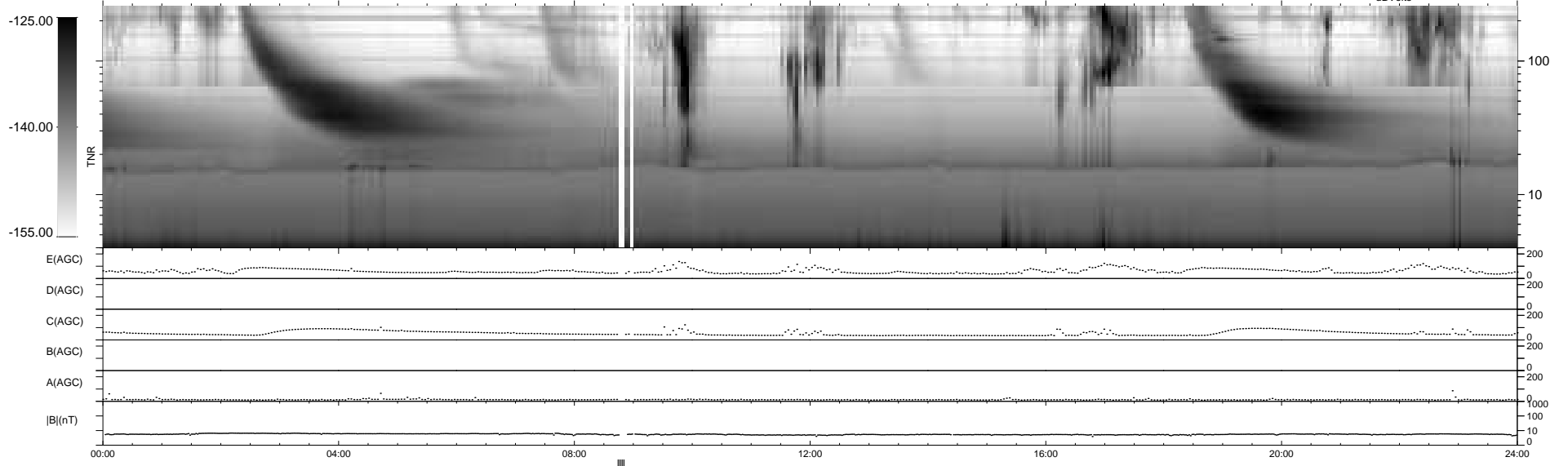
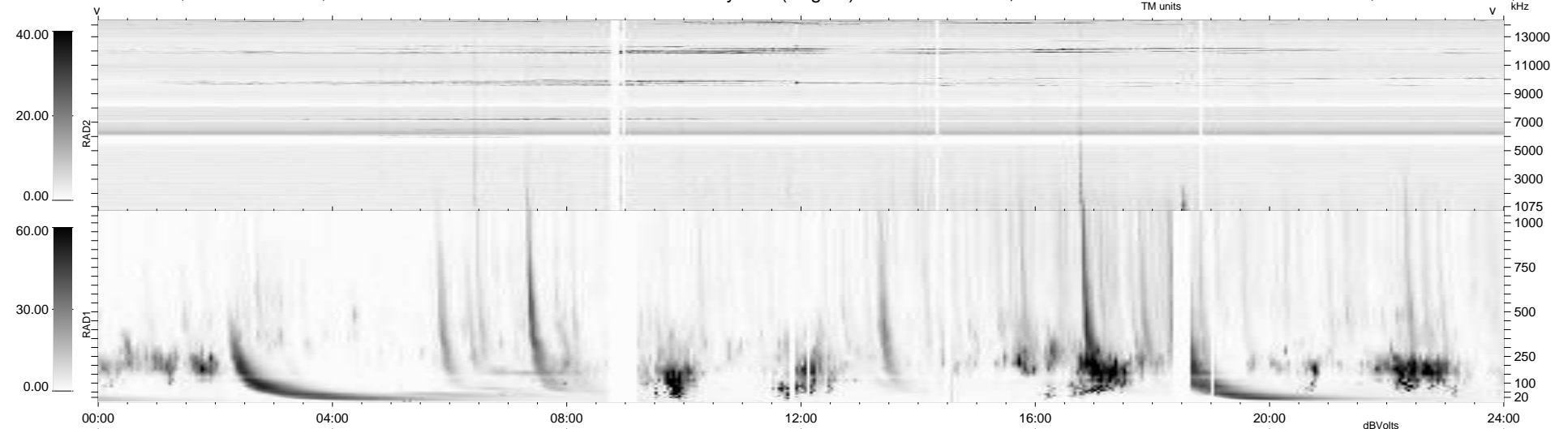
57 bad + 878 good MF/940MF projected (93%) - 5 missing MFs
 Avg interval = 180 secs
 Re = -248.18 (226.04, 102.44, -2.99 GSE)

windlib 2.0b

LZ version =

WIND/WAVES Summary Plot (Page 1) for 06-AUG-2016, DOY = 219

DAILY 2017-03-21 15:33:37
 Re = 249.08 (227.06, 102.36, -2.53 GSE)



```

RAD2
Antenna Ey .....
Mode LIN(1) .....
SUM/SEP SEP .....
Toggle OFF .....

RAD1
Antenna Ex .....
Mode LIS(2,4) .....
SUM/SEP SUM .....
Toggle OFF .....

TNR
Antenna ExEy .....
Mode A-32 .....
Sweep ACE .....
  
```