

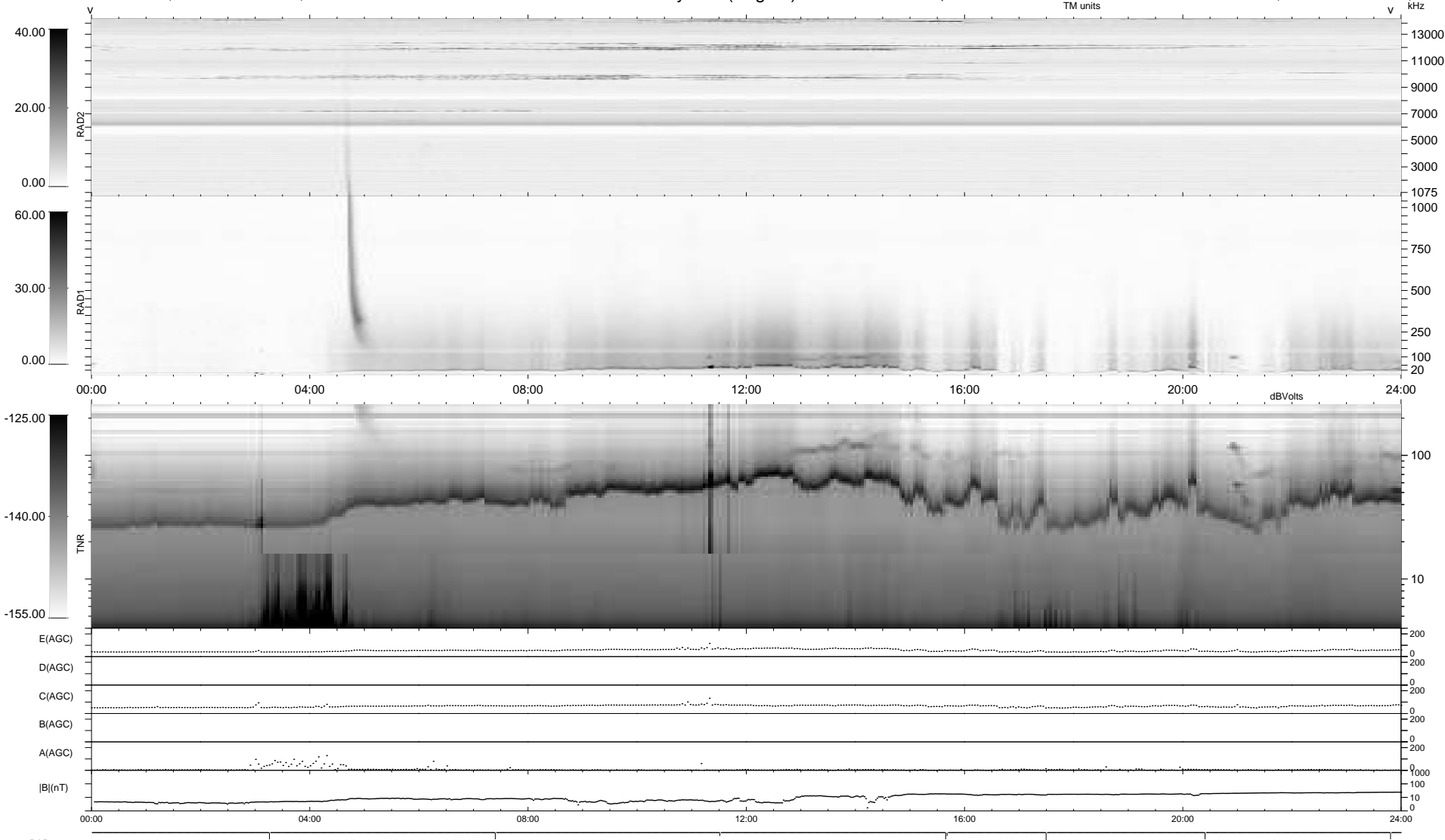
8 bad + 931 good MF/939MF projected (99%) - 0 missing MFs
Avg interval = 180 secs
Re = 243.95 (221.81, 101.43, -4.81 GSE)

windlib 2.0b

LZ version =

WIND/WAVES Summary Plot (Page 1) for 02-AUG-2016, DOY = 215

DAILY 2017-03-21 15:31:28
Re = 245.10 (222.88, 101.87, -4.37 GSE)



RAD2
Antenna Ey
Mode LIN(1)
SUM/SEP SEP
Toggle OFF
RAD1
Antenna Ex
Mode LIS(2,4)
SUM/SEP SUM
Toggle OFF
TNR
Antenna ExEy
Mode A-32
Sweep ACE