

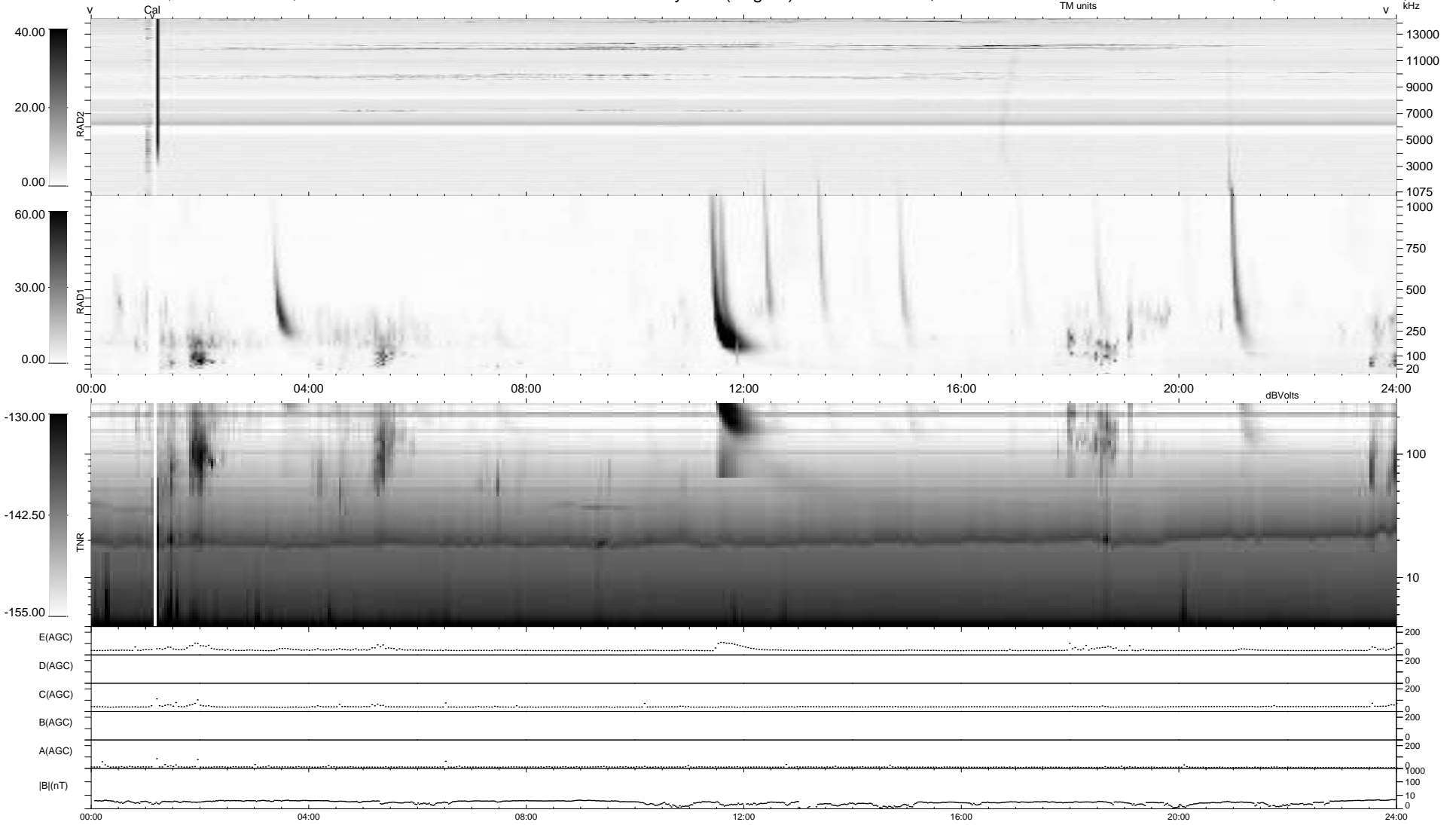
7 bad + 932 good MF/939MF projected (99%) - 0 missing MFs
 Avg interval = 180 secs
 Re = 240.19 (218.54, 99.47, -6.10 GSE)

windlib 2.0b

LZ version =

WIND/WAVES Summary Plot (Page 1) for 30-JUL-2016, DOY = 212

DAILY 2017-03-21 15:29:34
 Re = 241.48 (219.63, 100.22, -5.68 GSE)



```

RAD2
Antenna  Ey .....
Mode     LIN(1) .....
SUM/SEP  SEP .....
Toggle   OFF .....

RAD1
Antenna  Ex .....
Mode     LIS(2,4) .....
SUM/SEP  SUM .....
Toggle   OFF .....

TNR
Antenna  ExEy .....
Mode     A-32 .....
Sweep    ACE .....
  
```