

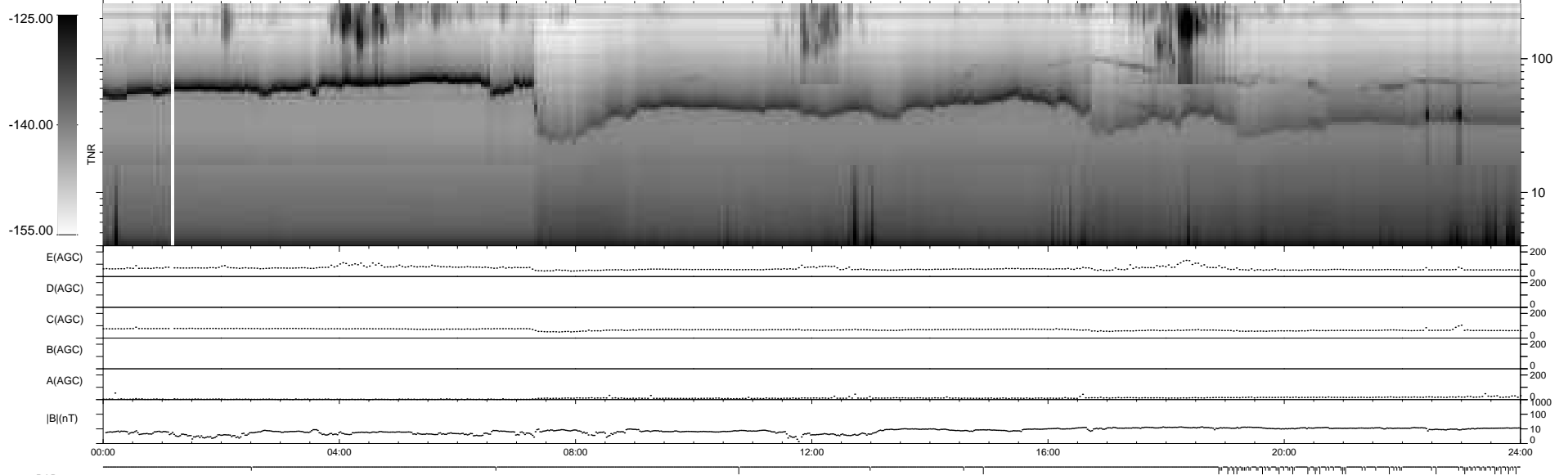
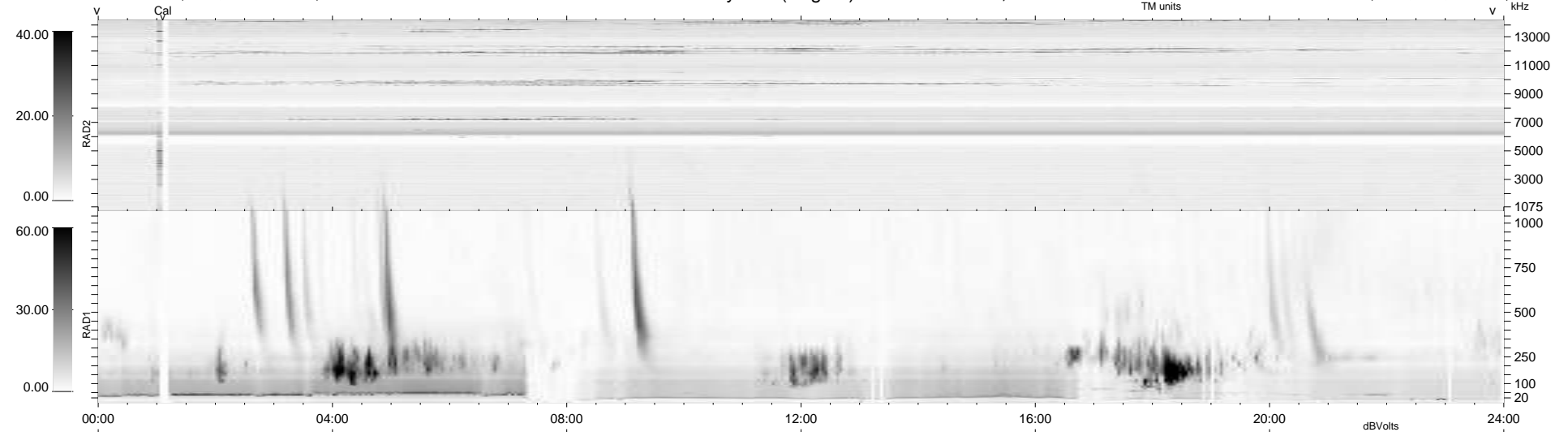
80 bad + 859 good MF/939MF projected (91%) - 0 missing MFs
 Avg interval = 180 secs
 Re = -237.50 (216.37, 97.70, -6.91 GSE)

windlib 2.0b

LZ version =

WIND/WAVES Summary Plot (Page 1) for 28-JUL-2016, DOY = 210

DAILY 2017-03-21 15:27:56
 Re = 238.85 (217.44, 98.62, -6.51 GSE)



RAD2
 Antenna Ey
 Mode LIN(1)
 SUM/SEP SEP
 Toggle OFF
 RAD1
 Antenna Ex
 Mode LIS(2,4)
 SUM/SEP SUM
 Toggle OFF
 TNR
 Antenna ExEy
 Mode A-32
 Sweep ACE