

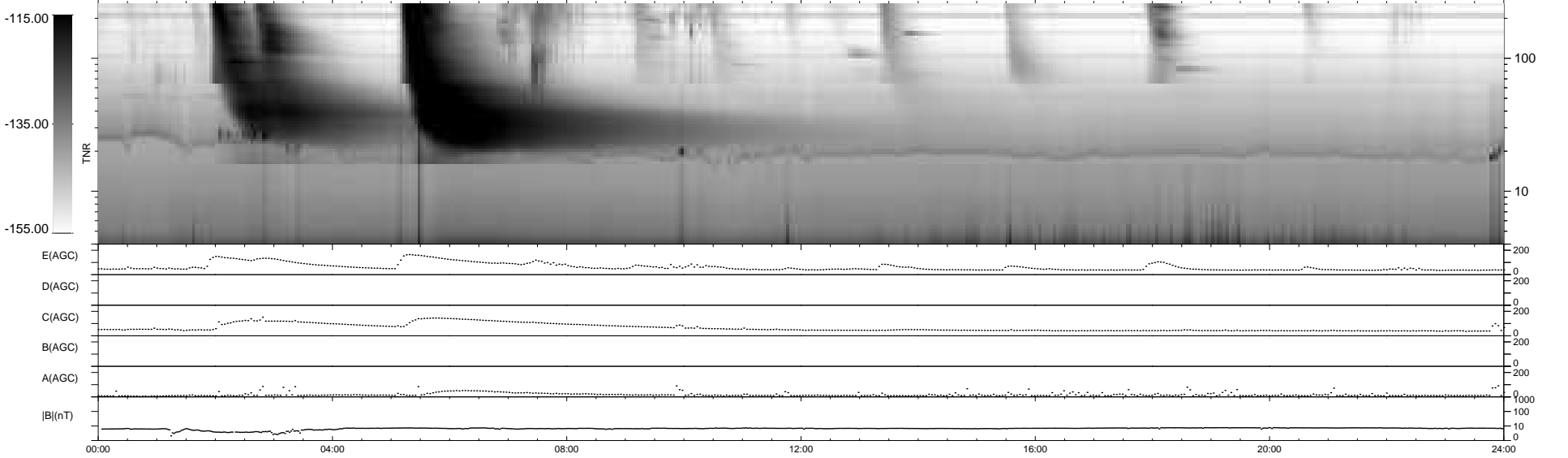
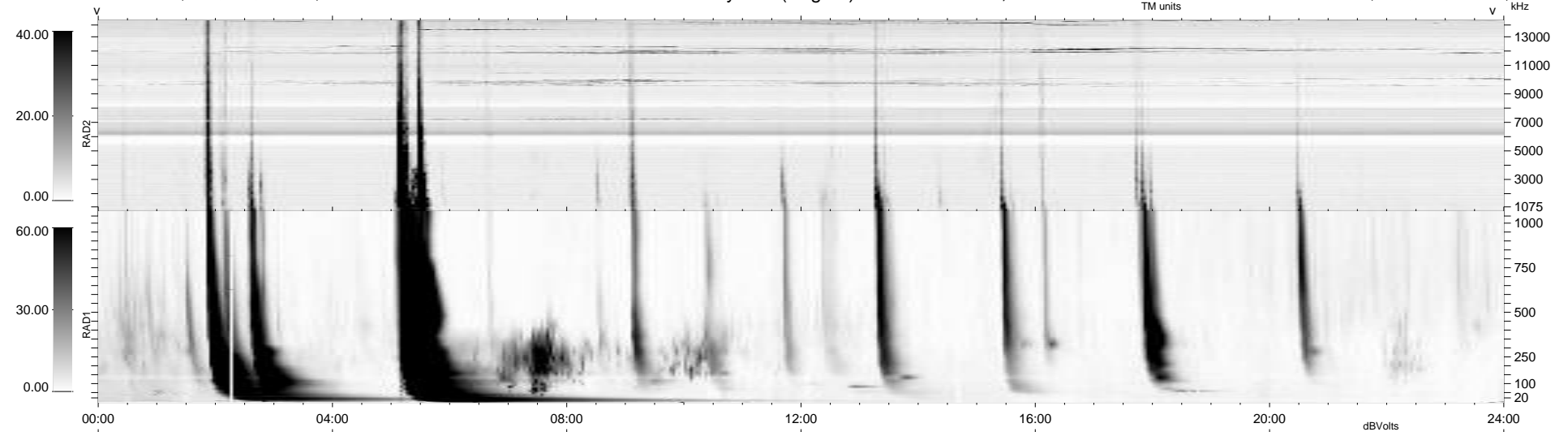
8 bad + 931 good MF/939MF projected (99%) - 0 missing MFs
 Avg interval = 180 secs
 Re = -230.67 (211.44, 91.81, -8.73 GSE)

windlib 2.0b

LZ version =

WIND/WAVES Summary Plot (Page 1) for 23-JUL-2016, DOY = 205

DAILY 2017-03-21 15:24:43
 Re = 232.01 (212.32, 93.14, -8.39 GSE)



RAD2
 Antenna Ey
 Mode LIN(1)
 SUM/SEP SEP
 Toggle OFF
 RAD1
 Antenna Ex
 Mode LIS(2,4)
 SUM/SEP SUM
 Toggle OFF
 TNR
 Antenna ExEy
 Mode A-32
 Sweep ACE