

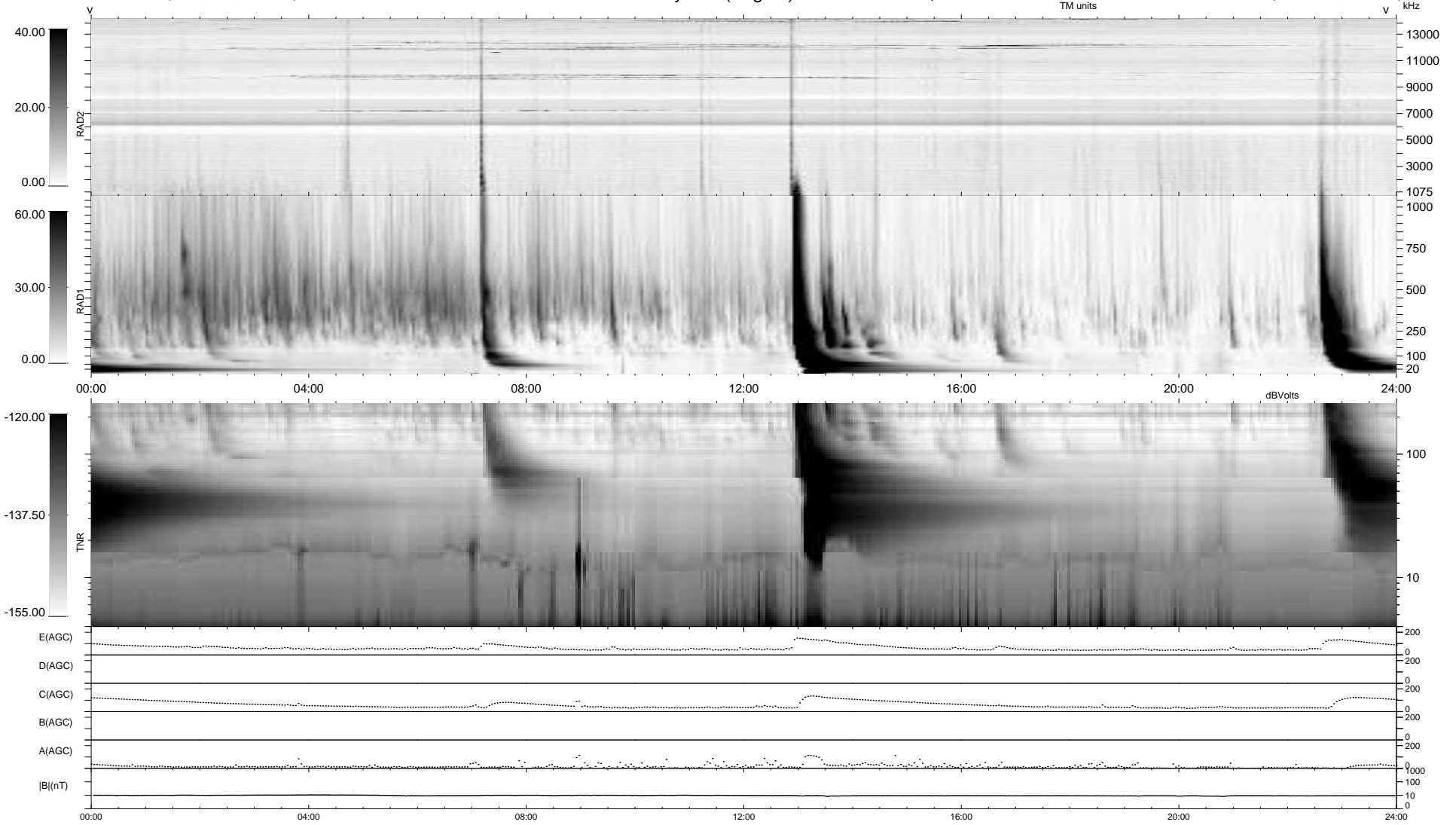
8 bad + 931 good MF/939MF projected (99%) - 0 missing MFs
 Avg interval = 180 secs
 Re = -228.05 (209.83, 88.83, -9.38 GSE)

windlib 2.0b

LZ version =

WIND/WAVES Summary Plot (Page 1) for 21-JUL-2016, DOY = 203

DAILY 2017-03-21 15:23:35
 Re = 229.34 (210.59, 90.36, -9.06 GSE)



```

RAD2
Antenna Ey .....
Mode LIN(1) .....
SUM/SEP SEP .....
Toggle OFF .....

RAD1
Antenna Ex .....
Mode LIS(2,4) .....
SUM/SEP SUM .....
Toggle OFF .....

TNR
Antenna ExEy .....
Mode A-32 .....
Sweep ACE .....
  
```