

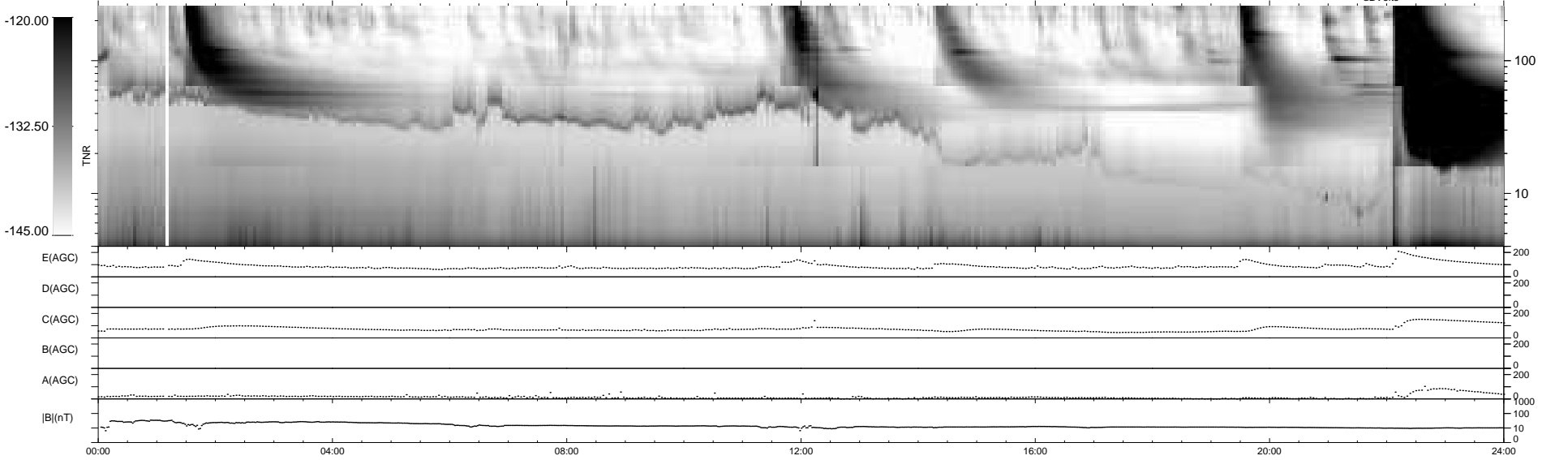
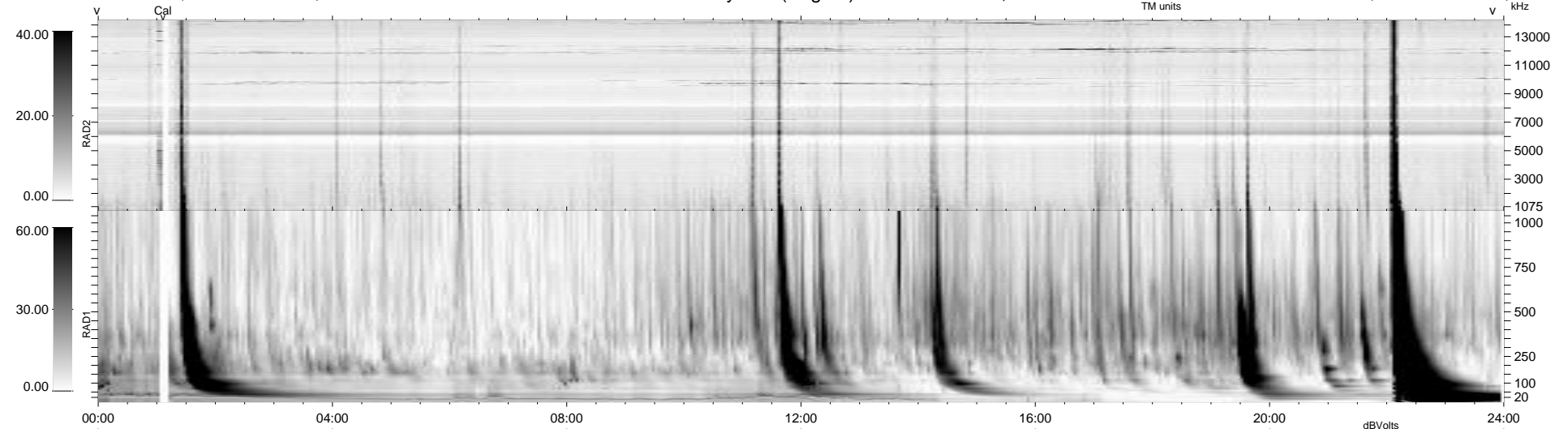
7 bad + 932 good MF/939MF projected (99%) - 0 missing MFs  
 Avg interval = 180 secs  
 Re = -226.78 (209.12, 87.19, -9.69 GSE)

windlib 2.0b

LZ version =

### WIND/WAVES Summary Plot (Page 1) for 20-JUL-2016, DOY = 202

DAILY 2017-03-21 15:23:24  
 Re = 228.04 (209.82, 88.82, -9.38 GSE)



RAD2  
 Antenna Ey .....  
 Mode LIN(1) .....  
 SUM/SEP SEP .....  
 Toggle OFF .....  
 RAD1  
 Antenna Ex .....  
 Mode LIS(2,4) .....  
 SUM/SEP SUM .....  
 Toggle OFF .....  
 TNR  
 Antenna ExEy .....  
 Mode A-32 .....  
 Sweep ACE .....