

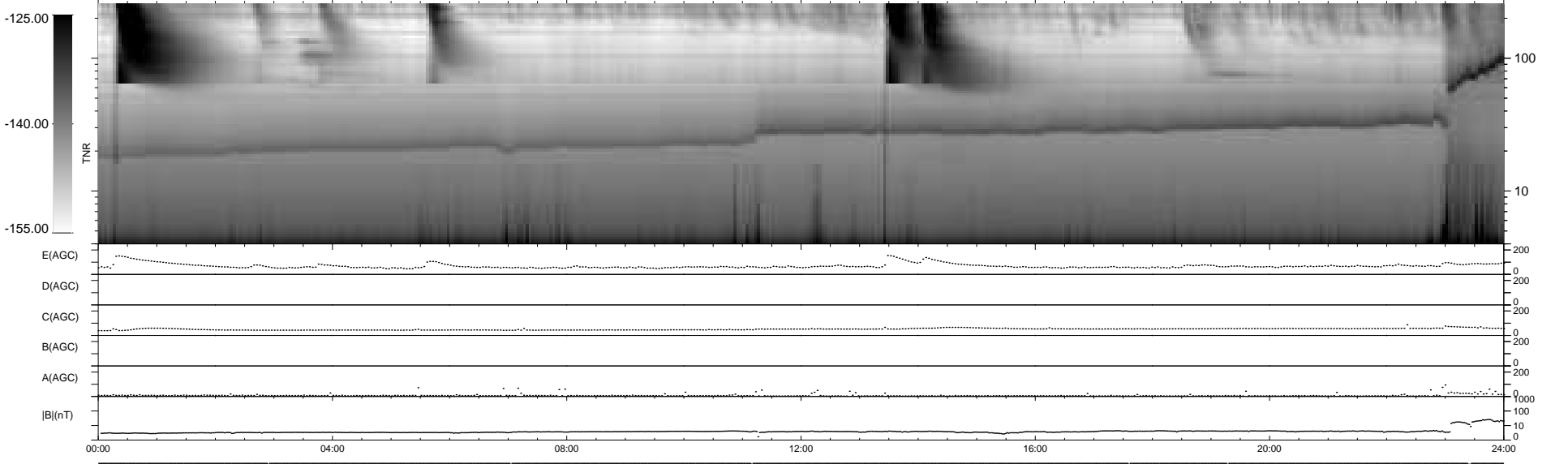
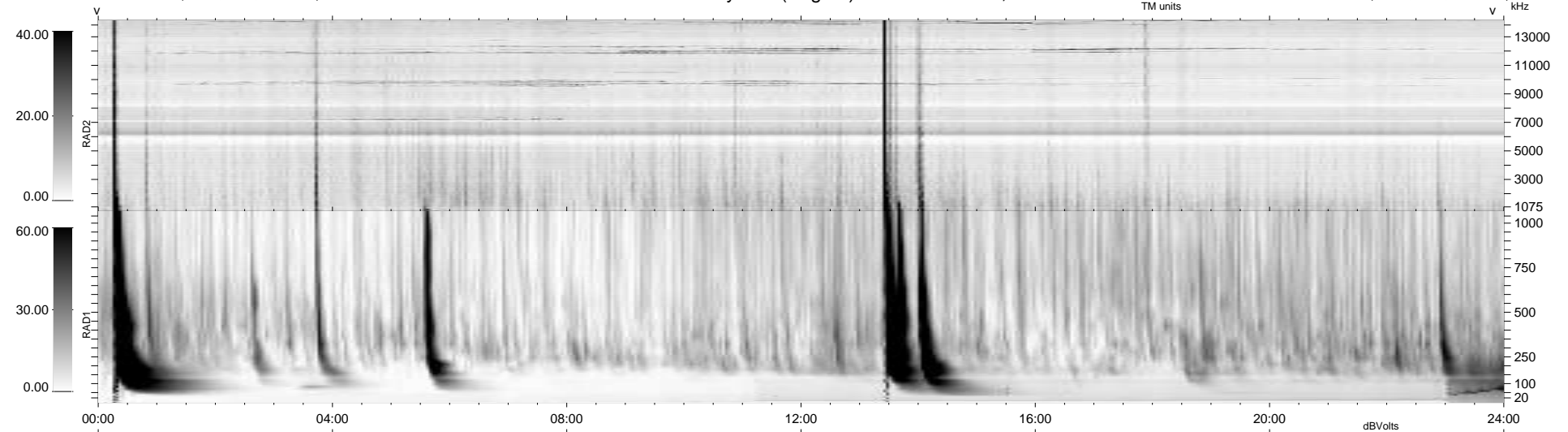
7 bad + 932 good MF/939MF projected (99%) - 0 missing MFs
 Avg interval = 180 secs
 Re = 225.53 (208.48, 85.44, -9.99 GSE)

windlib 2.0b

LZ version =

WIND/WAVES Summary Plot (Page 1) for 19-JUL-2016, DOY = 201

DAILY 2017-03-21 15:22:26
 Re = 226.77 (209.11, 87.18, -9.69 GSE)



RAD2
 Antenna Ey
 Mode LIN(1)
 SUM/SEP SEP
 Toggle OFF

RAD1
 Antenna Ex
 Mode LIS(2,4)
 SUM/SEP SUM
 Toggle OFF

TNR
 Antenna ExEy
 Mode A-32
 Sweep ACE