

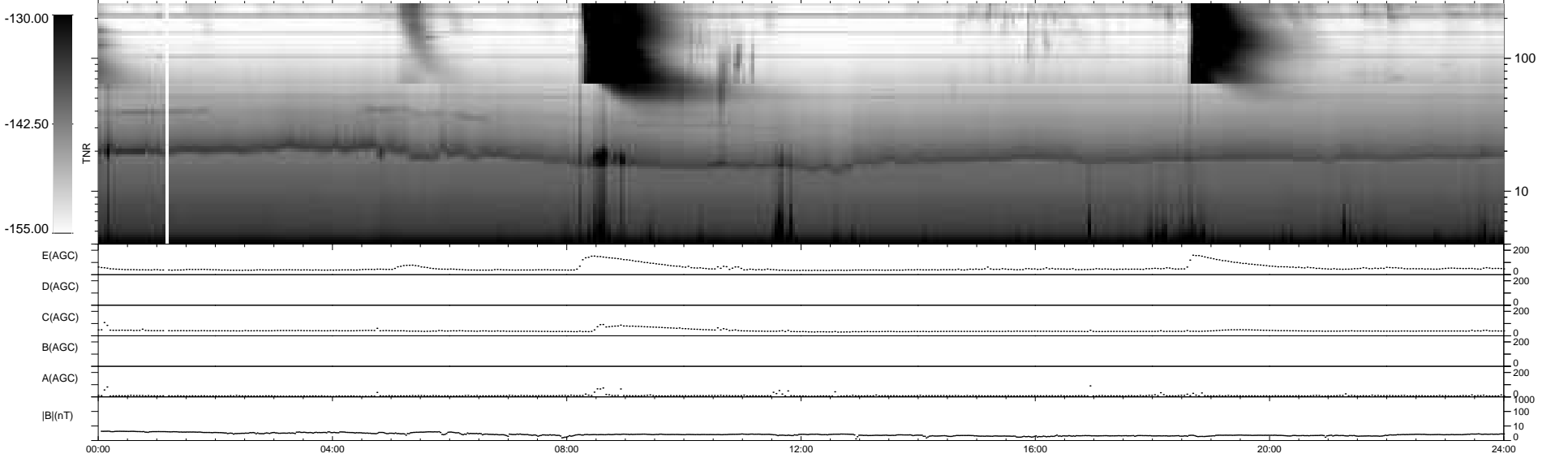
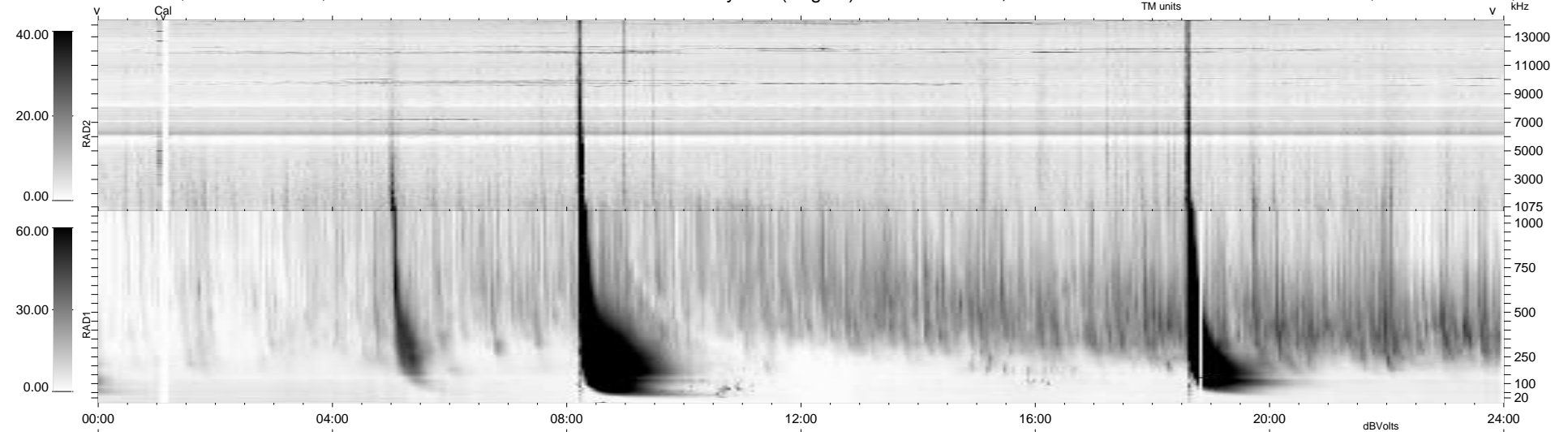
5 bad + 934 good MF/939MF projected (99%) - 0 missing MFs
 Avg interval = 180 secs
 Re = 224.30 (207.90, 83.58, -10.28 GSE)

windlib 2.0b

LZ version =

WIND/WAVES Summary Plot (Page 1) for 18-JUL-2016, DOY = 200

DAILY 2017-03-21 15:22:16
 Re = 225.52 (208.47, 85.43, -10.00 GSE)



RAD2
 Antenna Ey
 Mode LIN(1)
 SUM/SEP SEP
 Toggle OFF
 RAD1
 Antenna Ex
 Mode LIS(2,4)
 SUM/SEP SUM
 Toggle OFF
 TNR
 Antenna ExEy
 Mode A-32
 Sweep ACE