

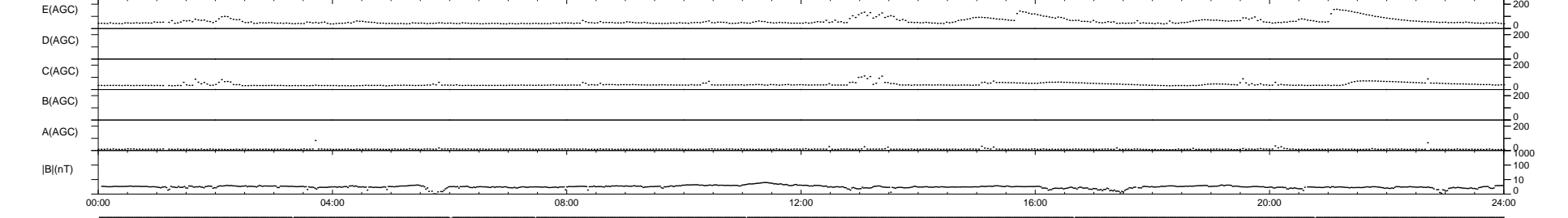
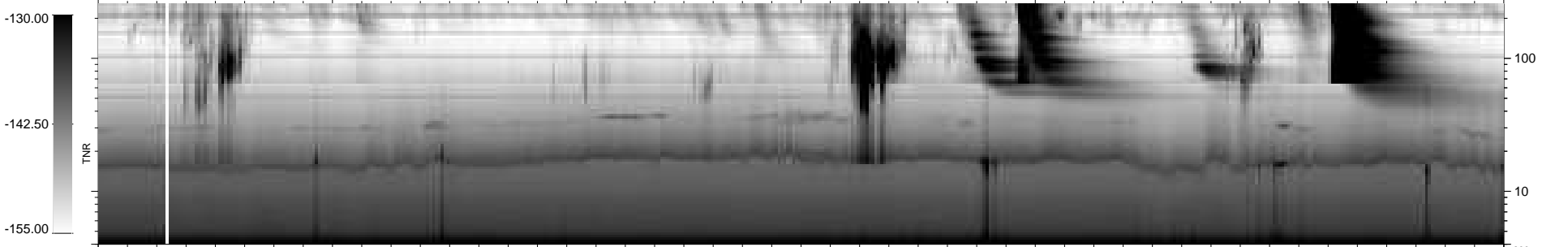
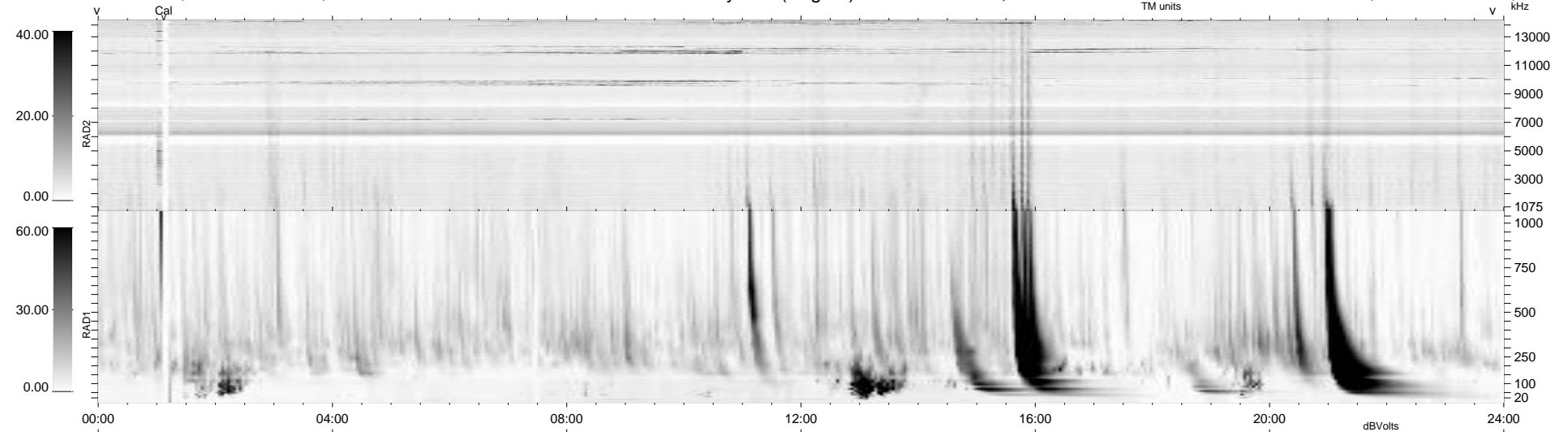
7 bad + 932 good MF/939MF projected (99%) - 0 missing MFs
 Avg interval = 180 secs
 Re = 221.93 (206.92, 79.48, -10.84 GSE)

windlib 2.0b

LZ version =

WIND/WAVES Summary Plot (Page 1) for 16-JUL-2016, DOY = 198

DAILY 2017-03-21 15:19:41
 Re = 223.10 (207.38, 81.58, -10.57 GSE)



```

RAD2
Antenna Ey .....
Mode LIN(1) .....
SUM/SEP SEP .....
Toggle OFF .....

RAD1
Antenna Ex .....
Mode LIS(2,4) .....
SUM/SEP SUM .....
Toggle OFF .....

TNR
Antenna ExEy .....
Mode A-32 .....
Sweep ACE .....
  
```