

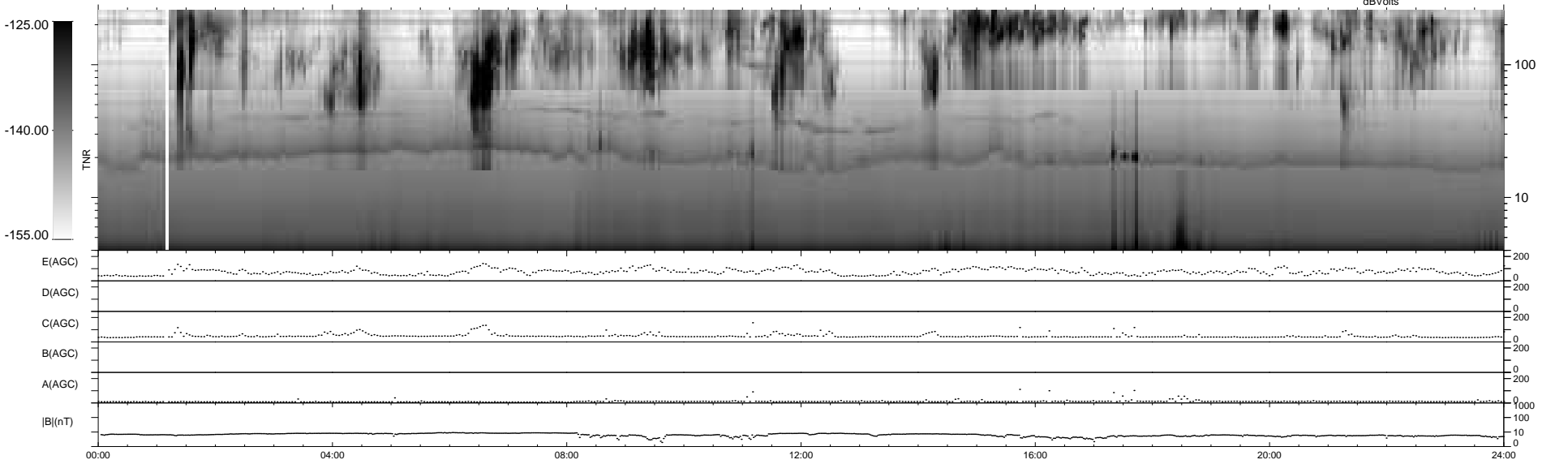
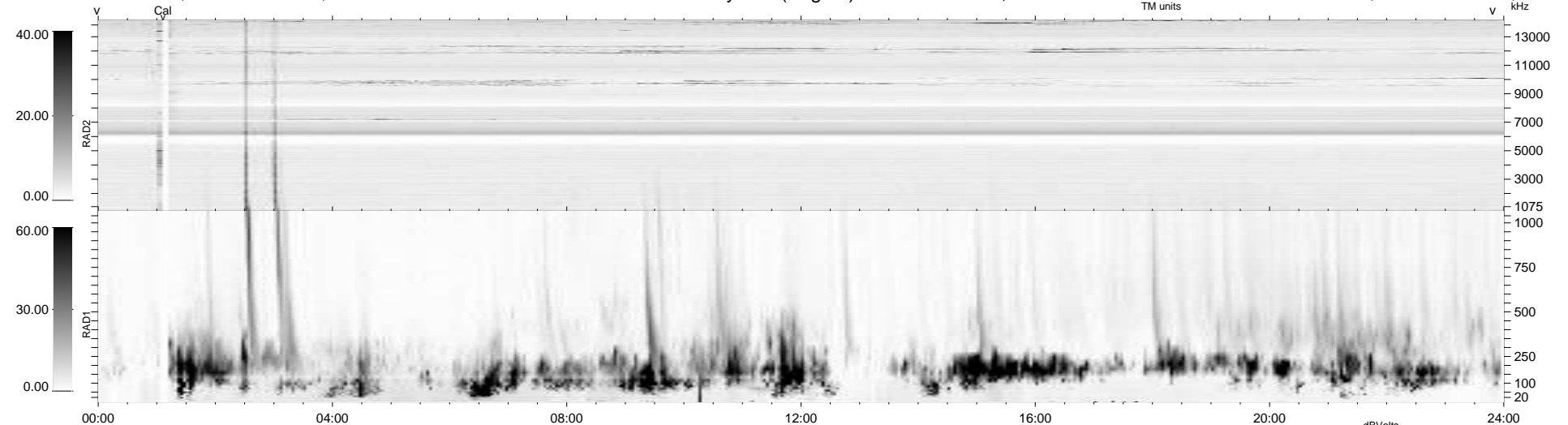
9 bad + 930 good MF/939MF projected (99%) - 0 missing MFs  
 Avg interval = 180 secs  
 Re = -217.40 (205.56, 69.80, -11.79 GSE)

windlib 2.0b

LZ version =

### WIND/WAVES Summary Plot (Page 1) for 12-JUL-2016, DOY = 194

DAILY 2017-03-21 15:17:24  
 Re = 218.50 (205.83, 72.39, -11.58 GSE)



RAD2  
 Antenna Ey .....  
 Mode LIN(1) .....  
 SUM/SEP SEP .....  
 Toggle OFF .....  
 RAD1  
 Antenna Ex .....  
 Mode LIS(2,4) .....  
 SUM/SEP SUM .....  
 Toggle OFF .....  
 TNR  
 Antenna ExEy .....  
 Mode A-32 .....  
 Sweep ACE .....