

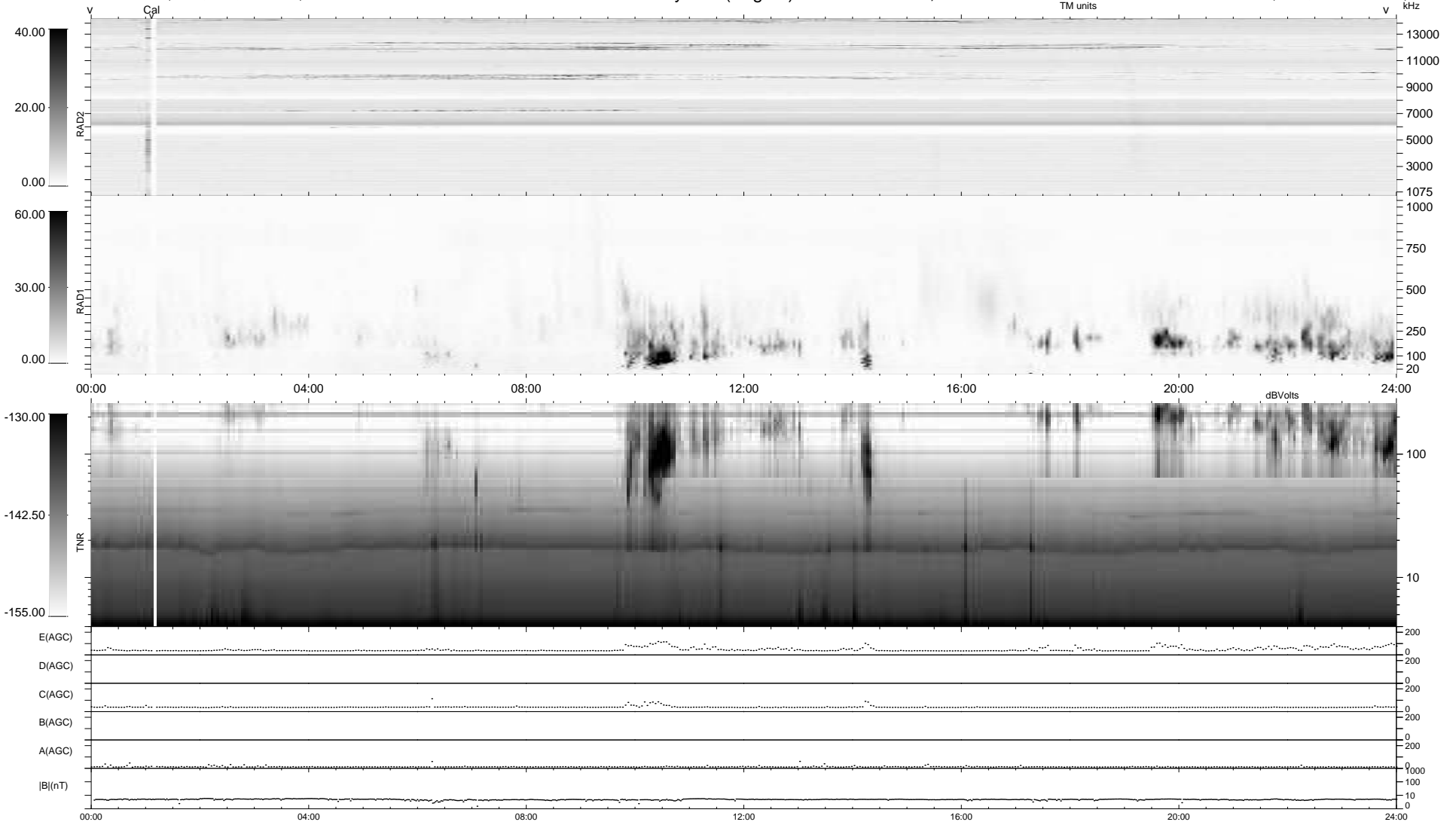
5 bad + 934 good MF/939MF projected (99%) - 0 missing MFs
 Avg interval = 180 secs
 Re = - 215.24 (205.08, 64.21, -12.19 GSE)

windlib 2.0b

LZ version =

WIND/WAVES Summary Plot (Page 1) for 10-JUL-2016, DOY = 192

DAILY 2017-03-21 15:16:08
 Re = 216.31 (205.30, 67.04, -12.00 GSE)



RAD2
 Antenna Ey
 Mode LIN(1)
 SUM/SEP SEP
 Toggle OFF

RAD1
 Antenna Ex
 Mode LIS(2,4)
 SUM/SEP SUM
 Toggle OFF

TNR
 Antenna ExEy
 Mode A-32
 Sweep ACE