

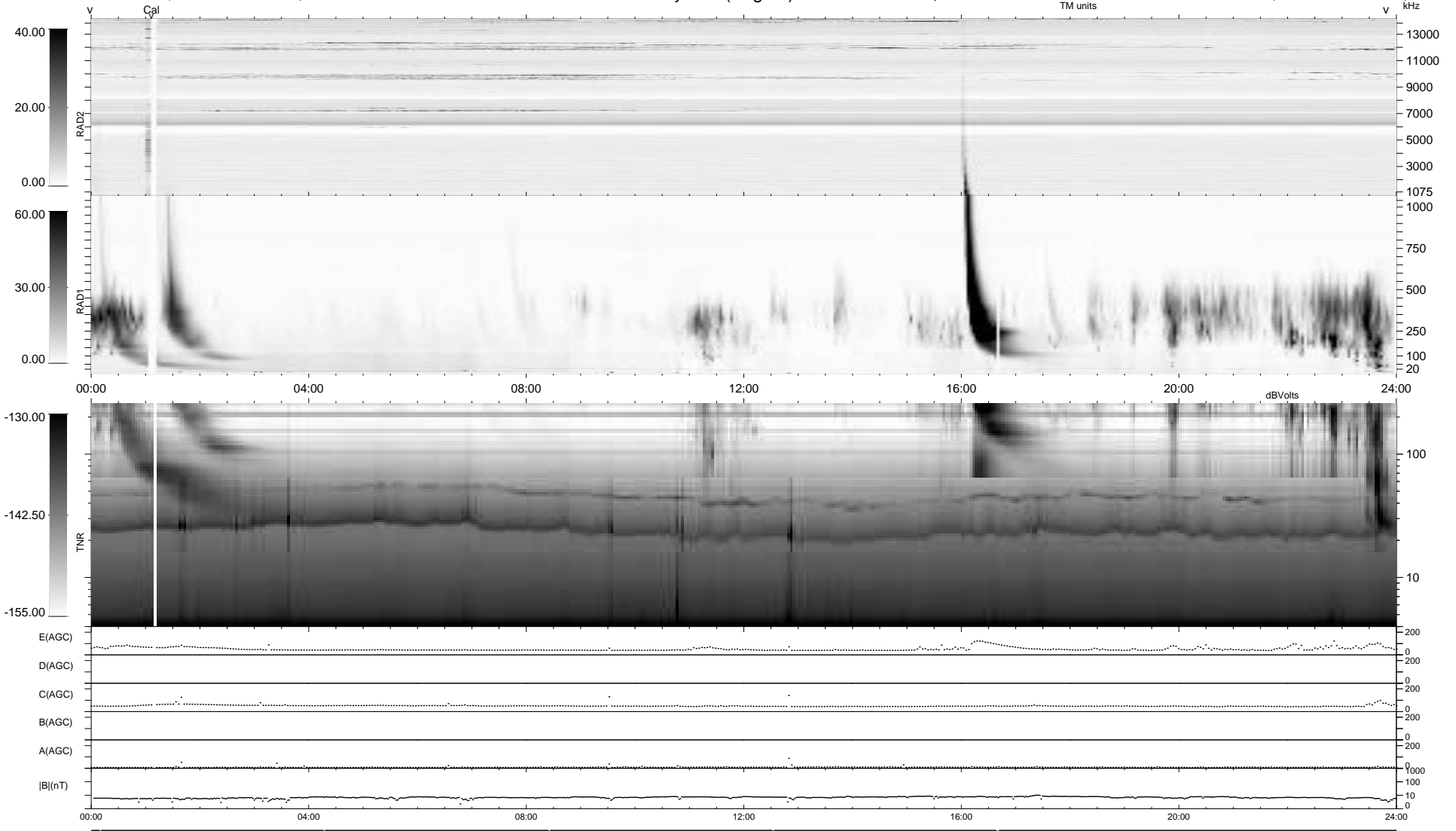
6 bad + 933 good MF/939MF projected (99%) - 0 missing MFs
 Avg interval = 180 secs
 Re = 202.85 (201.81, 16.15, -12.59 GSE)

windlib 2.0b

LZ version =

WIND/WAVES Summary Plot (Page 1) for 26-JUN-2016, DOY = 178

DAILY 2017-03-21 14:53:07
 Re = 203.40 (202.04, 19.75, -12.71 GSE)



RAD2
 Antenna Ey
 Mode LIN(1)
 SUM/SEP SEP
 Toggle OFF

RAD1
 Antenna Ex
 Mode LIS(2,4)
 SUM/SEP SUM
 Toggle OFF

TNR
 Antenna ExEy
 Mode A-32
 Sweep ACE