

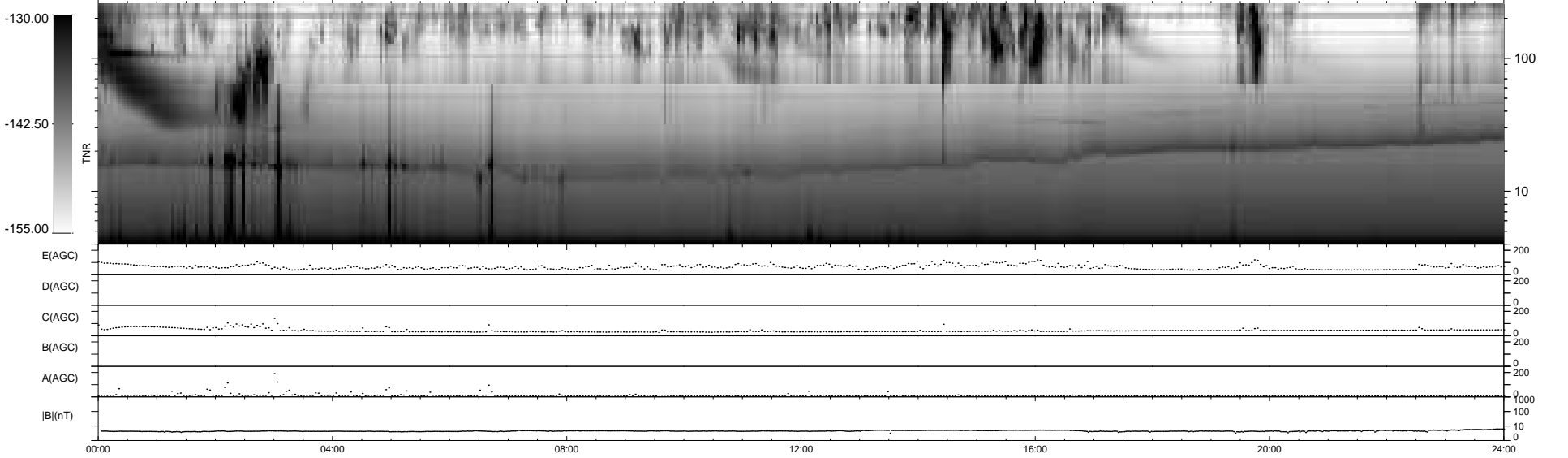
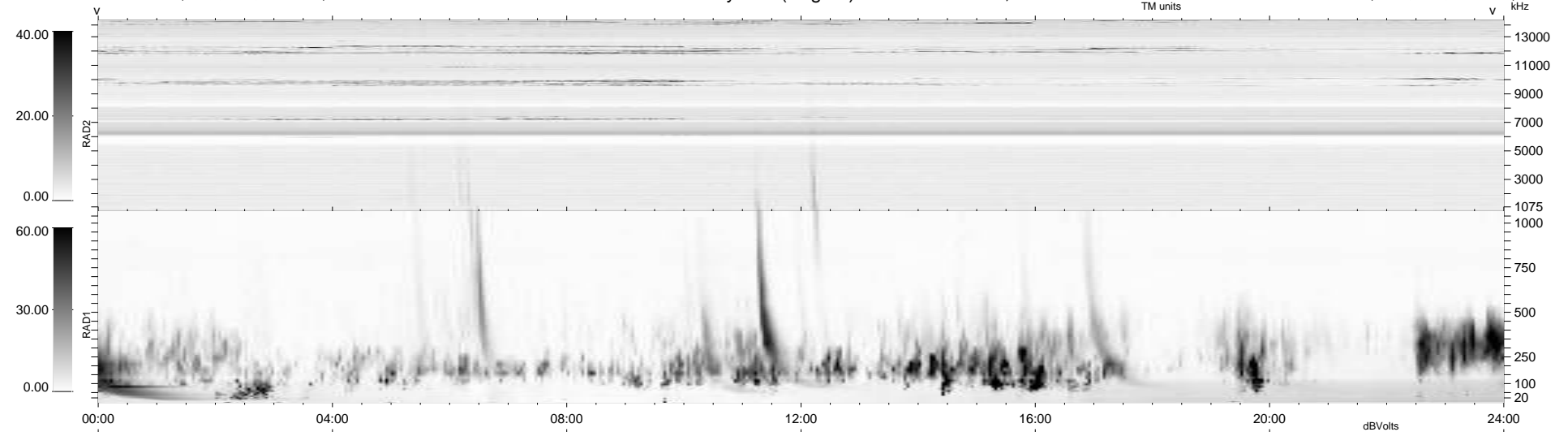
7 bad + 932 good MF/939MF projected (99%) - 0 missing MFs  
 Avg interval = 180 secs  
 Re = 202.38 (201.61, 12.54, -12.45 GSE)

windlib 2.0b

LZ version =

### WIND/WAVES Summary Plot (Page 1) for 25-JUN-2016, DOY = 177

DAILY 2017-03-21 14:52:50  
 Re = 202.84 (201.81, 16.13, -12.59 GSE)



```

RAD2
Antenna Ey .....
Mode LIN(1) .....
SUM/SEP SEP .....
Toggle OFF .....

RAD1
Antenna Ex .....
Mode LIS(2,4) .....
SUM/SEP SUM .....
Toggle OFF .....

TNR
Antenna ExEy .....
Mode A-32 .....
Sweep ACE .....
  
```