

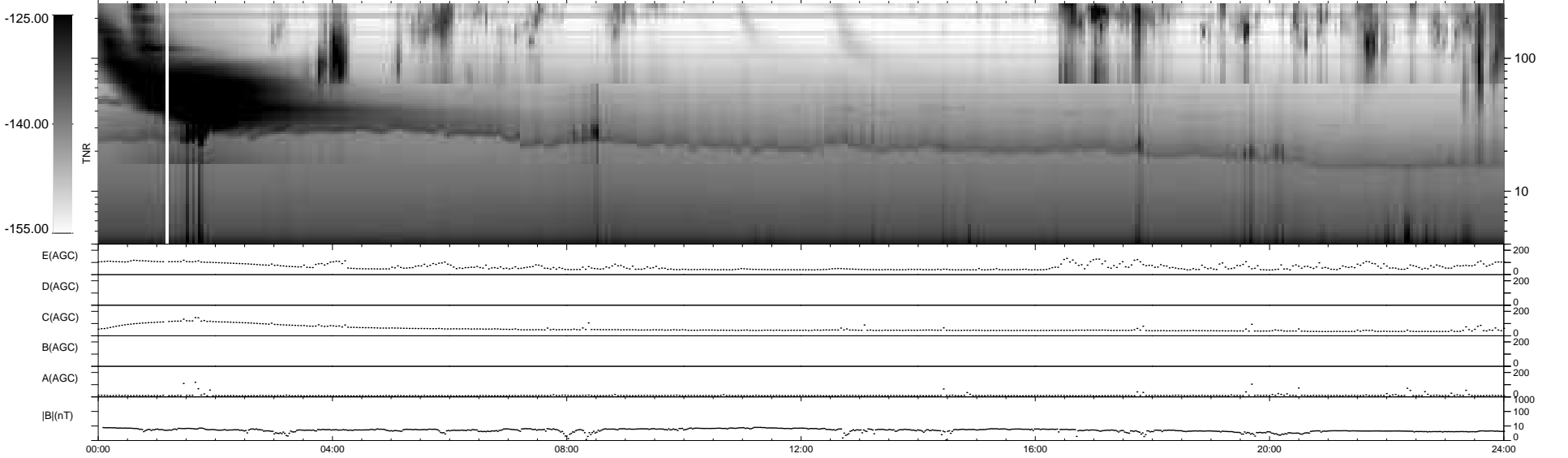
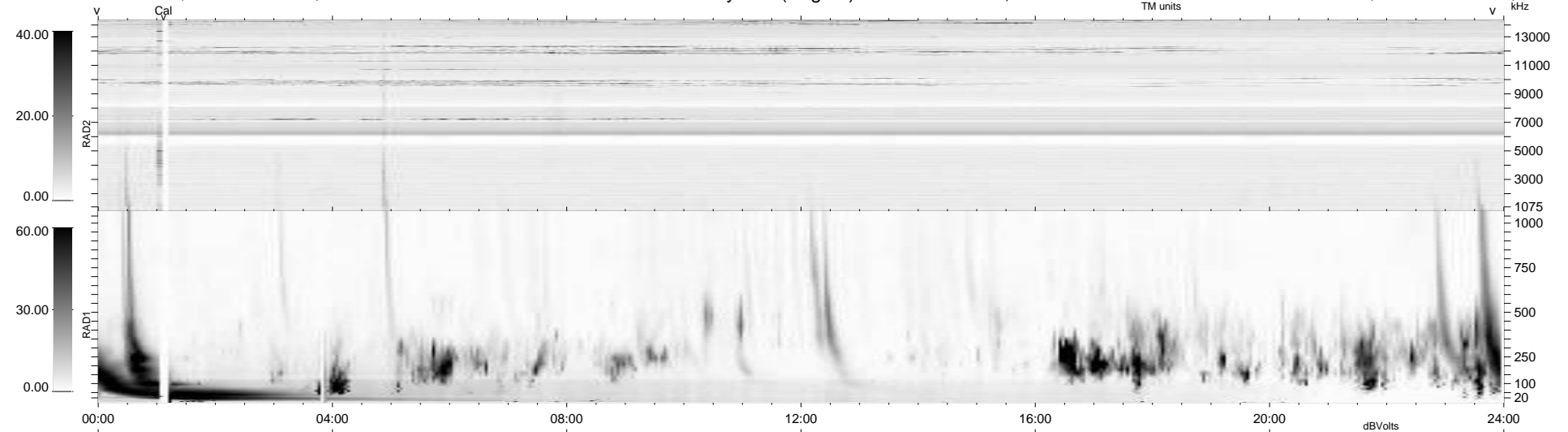
5 bad + 934 good MF/939MF projected (99%) - 0 missing MFs  
 Avg interval = 180 secs  
 Re = 202.02 (201.44, 8.93, -12.29 GSE)

windlib 2.0b

LZ version =

### WIND/WAVES Summary Plot (Page 1) for 24-JUN-2016, DOY = 176

DAILY 2017-03-21 14:51:59  
 Re = 202.38 (201.61, 12.51, -12.45 GSE)



RAD2  
 Antenna Ey .....  
 Mode LIN(1) .....  
 SUM/SEP SEP .....  
 Toggle OFF .....  
 RAD1  
 Antenna Ex .....  
 Mode LIS(2,4) .....  
 SUM/SEP SUM .....  
 Toggle OFF .....  
 TNR  
 Antenna ExEy .....  
 Mode A-32 .....  
 Sweep ACE .....