

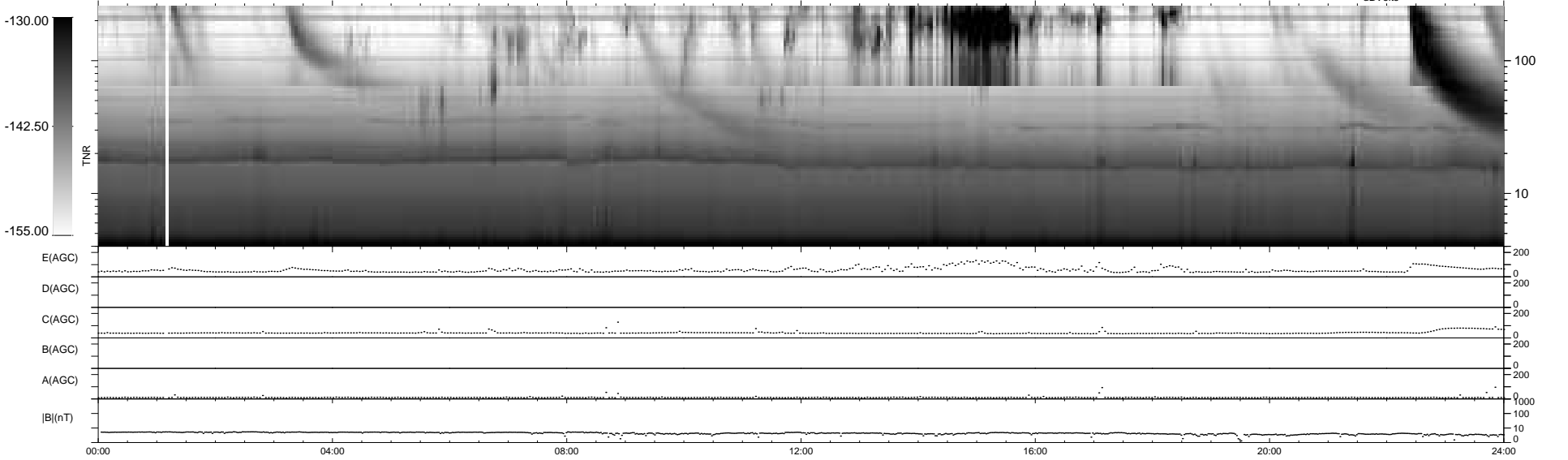
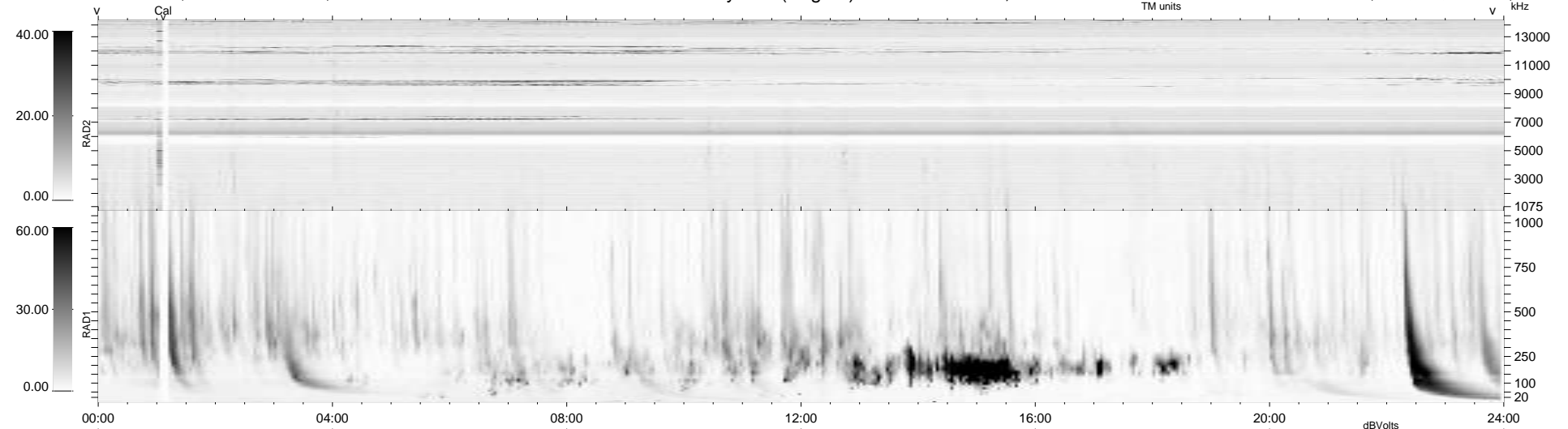
8 bad + 931 good MF/939MF projected (99%) - 0 missing MFs
 Avg interval = 180 secs
 Re = 201.97 (201.28, -12.57, -10.95 GSE)

windlib 2.0b

LZ version =

WIND/WAVES Summary Plot (Page 1) for 18-JUN-2016, DOY = 170

DAILY 2017-03-21 14:46:09
 Re = 201.72 (201.21, -9.02, -11.21 GSE)



RAD2
 Antenna Ey
 Mode LIN(1)
 SUM/SEP SEP
 Toggle OFF
 RAD1
 Antenna Ex
 Mode LIS(2,4)
 SUM/SEP SUM
 Toggle OFF
 TNR
 Antenna ExEy
 Mode A-32
 Sweep ACE