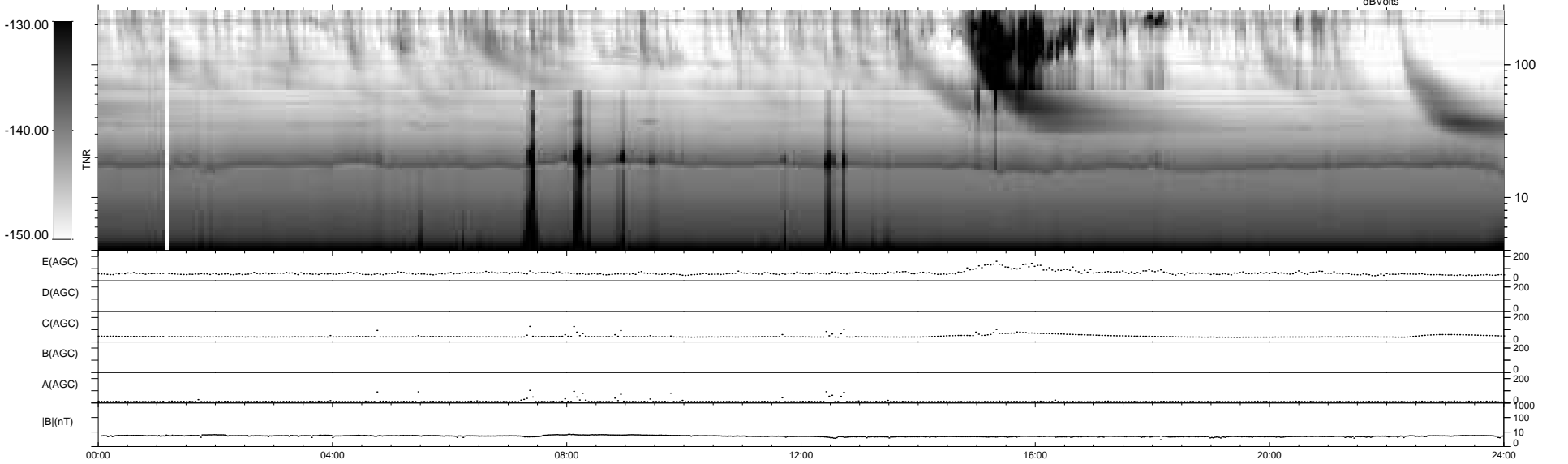
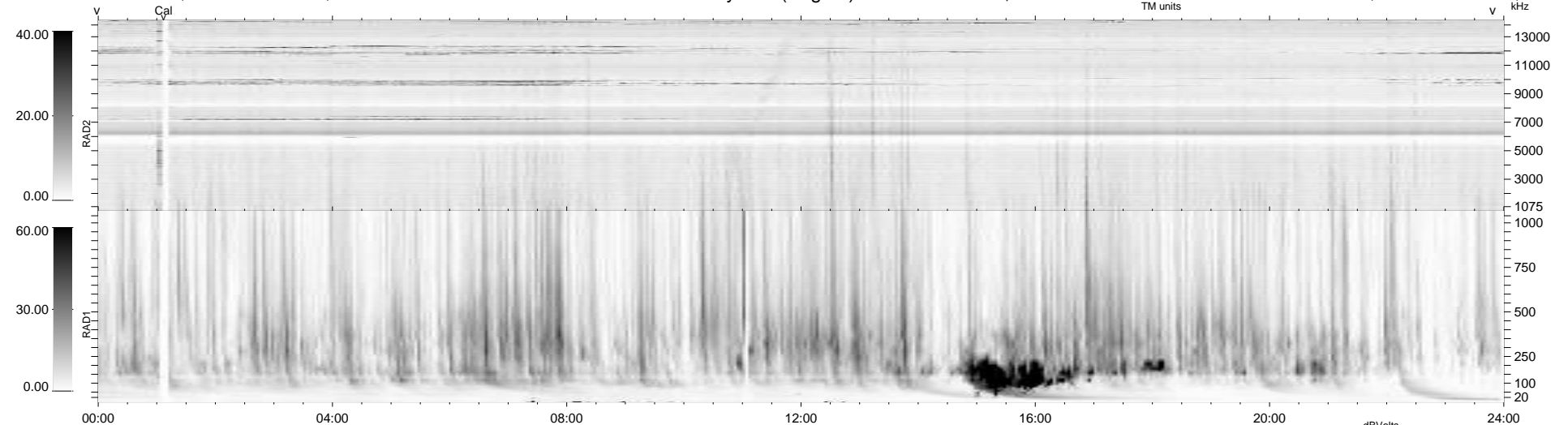


6 bad + 933 good MF/939MF projected (99%) - 0 missing MFs
 Avg interval = 180 secs
 Re = 202.78 (201.55, -19.68, -10.37 GSE)

windlib 2.0b LZ version =
 DAILY 2017-03-21 14:44:57
 Re = 202.33 (201.40, -16.15, -10.66 GSE)

WIND/WAVES Summary Plot (Page 1) for 16-JUN-2016, DOY = 168



RAD2
 Antenna Ey
 Mode LIN(1)
 SUM/SEP SEP
 Toggle OFF
 RAD1
 Antenna Ex
 Mode LIS(2,4)
 SUM/SEP SUM
 Toggle OFF
 TNR
 Antenna ExEy
 Mode A-32
 Sweep ACE