

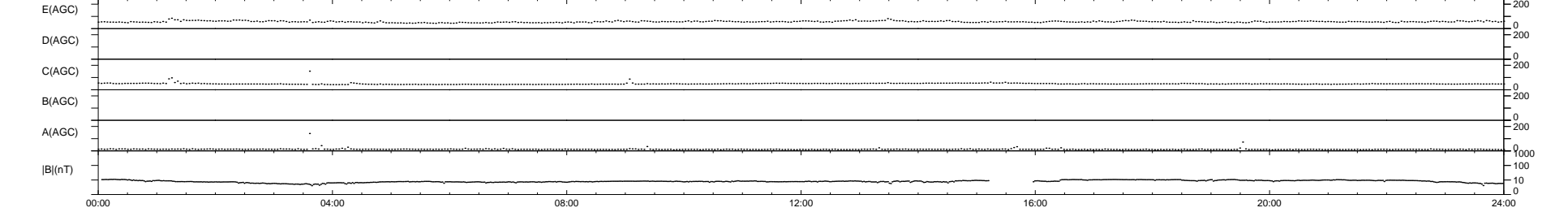
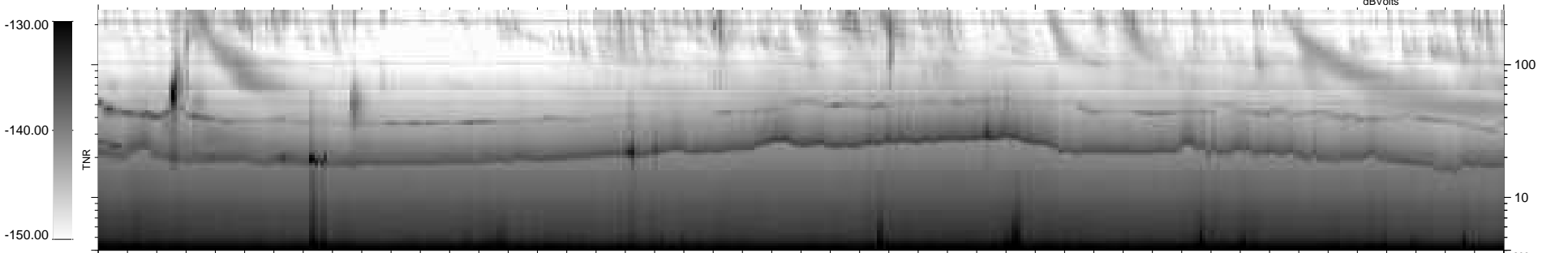
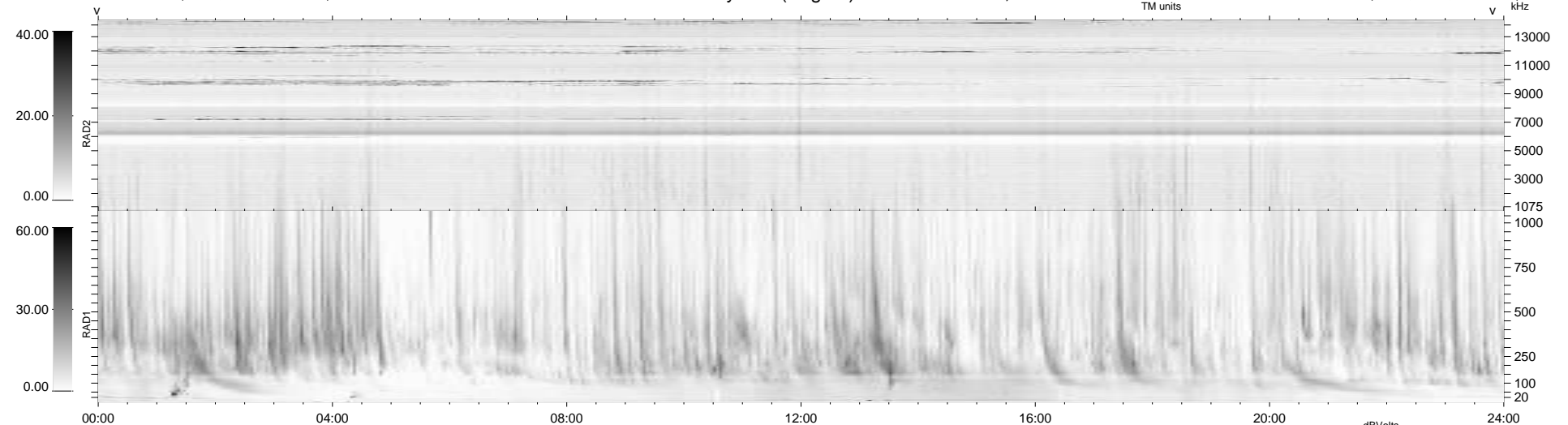
5 bad + 934 good MF/939MF projected (99%) - 0 missing MFs
 Avg interval = 180 secs
 Re = -203.32 (201.74, -23.23, -10.06 GSE)

windlib 2.0b

LZ version =

WIND/WAVES Summary Plot (Page 1) for 15-JUN-2016, DOY = 167

DAILY 2017-03-21 14:44:43
 Re = 202.78 (201.55, -19.71, -10.37 GSE)



RAD2
 Antenna Ey
 Mode LIN(1)
 SUM/SEP SEP
 Toggle OFF

RAD1
 Antenna Ex
 Mode LIS(2,4)
 SUM/SEP SUM
 Toggle OFF

TNR
 Antenna ExEy
 Mode A-32
 Sweep ACE