

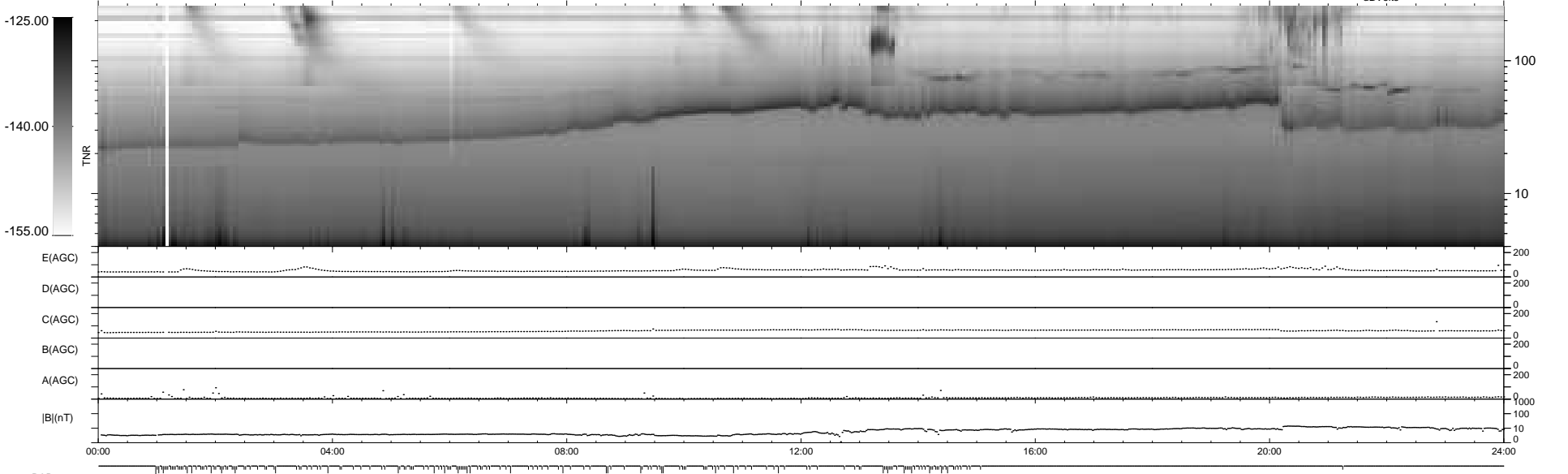
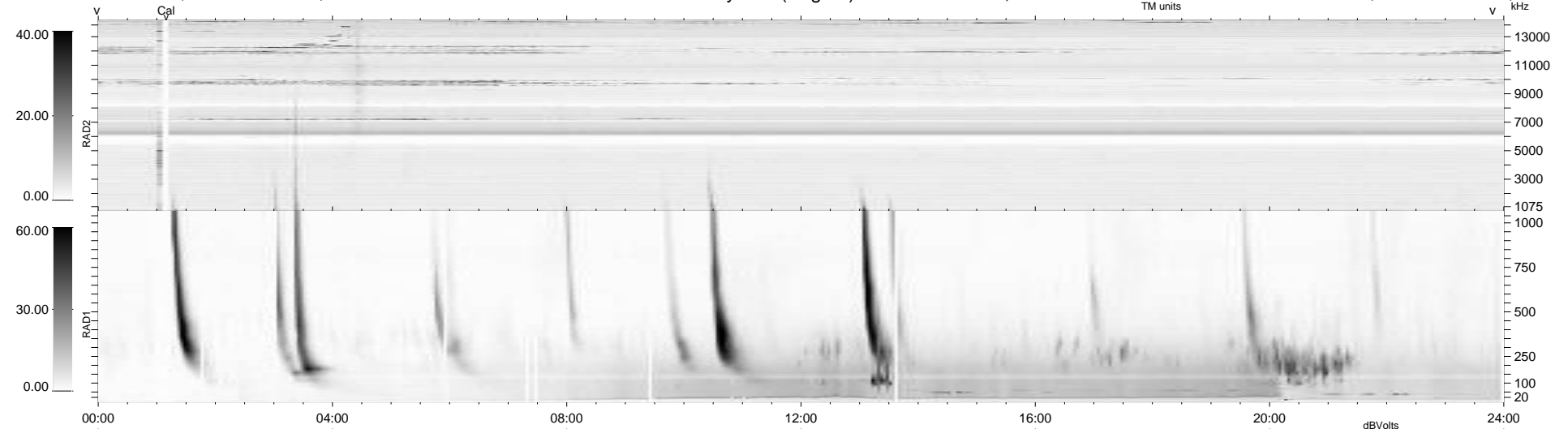
176 bad + 763 good MF/939MF projected (81%) - 0 missing MFs
 Avg interval = 180 secs
 Re = - 207.25 (203.04, -40.76, -8.28 GSE)

windlib 2.0b

LZ version =

WIND/WAVES Summary Plot (Page 1) for 10-JUN-2016, DOY = 162

DAILY 2017-03-21 14:39:38
 Re = 206.34 (202.75, -37.32, -8.66 GSE)



RAD2 Antenna Ey
 Mode LIN(1)
 SUM/SEP SEP
 Toggle OFF
 RAD1 Antenna Ex
 Mode LIS(2,4)
 SUM/SEP SUM
 Toggle OFF
 TNR Antenna ExEy
 Mode A-32
 Sweep ACE