

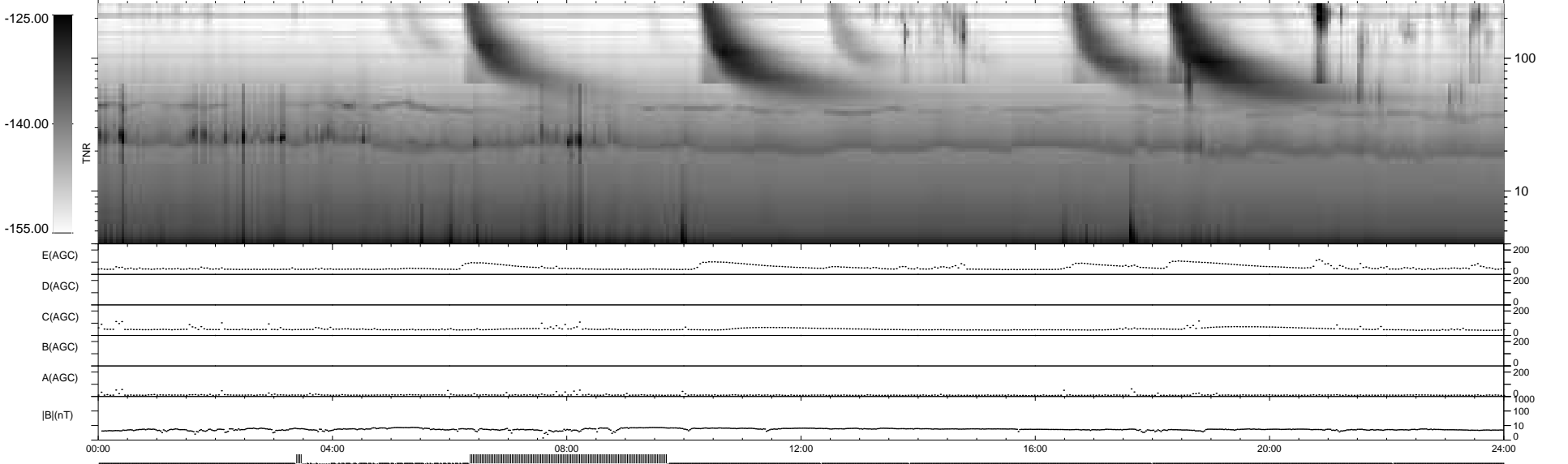
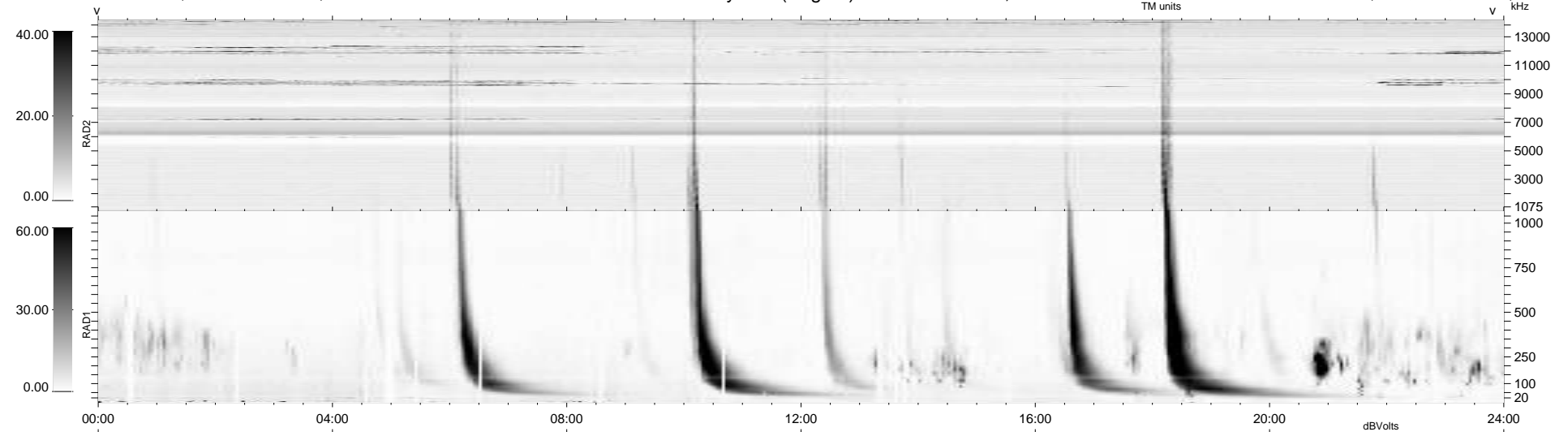
53 bad + 750 good MF/939MF projected (79%) - 136 missing MFs
 Avg interval = 180 secs
 Re = 210.31 (203.93, -50.93, -7.03 GSE)

windlib 2.0b

LZ version =

WIND/WAVES Summary Plot (Page 1) for 07-JUN-2016, DOY = 159

DAILY 2017-03-21 14:40:20
 Re = 209.26 (203.64, -47.61, -7.46 GSE)



RAD2
 Antenna Ey
 Mode LIN(1)
 SUM/SEP SEP
 Toggle OFF
 RAD1
 Antenna Ex
 Mode LIS(2,4)
 SUM/SEP SUM
 Toggle OFF
 TNR
 Antenna ExEy
 Mode A-32
 Sweep ACE