

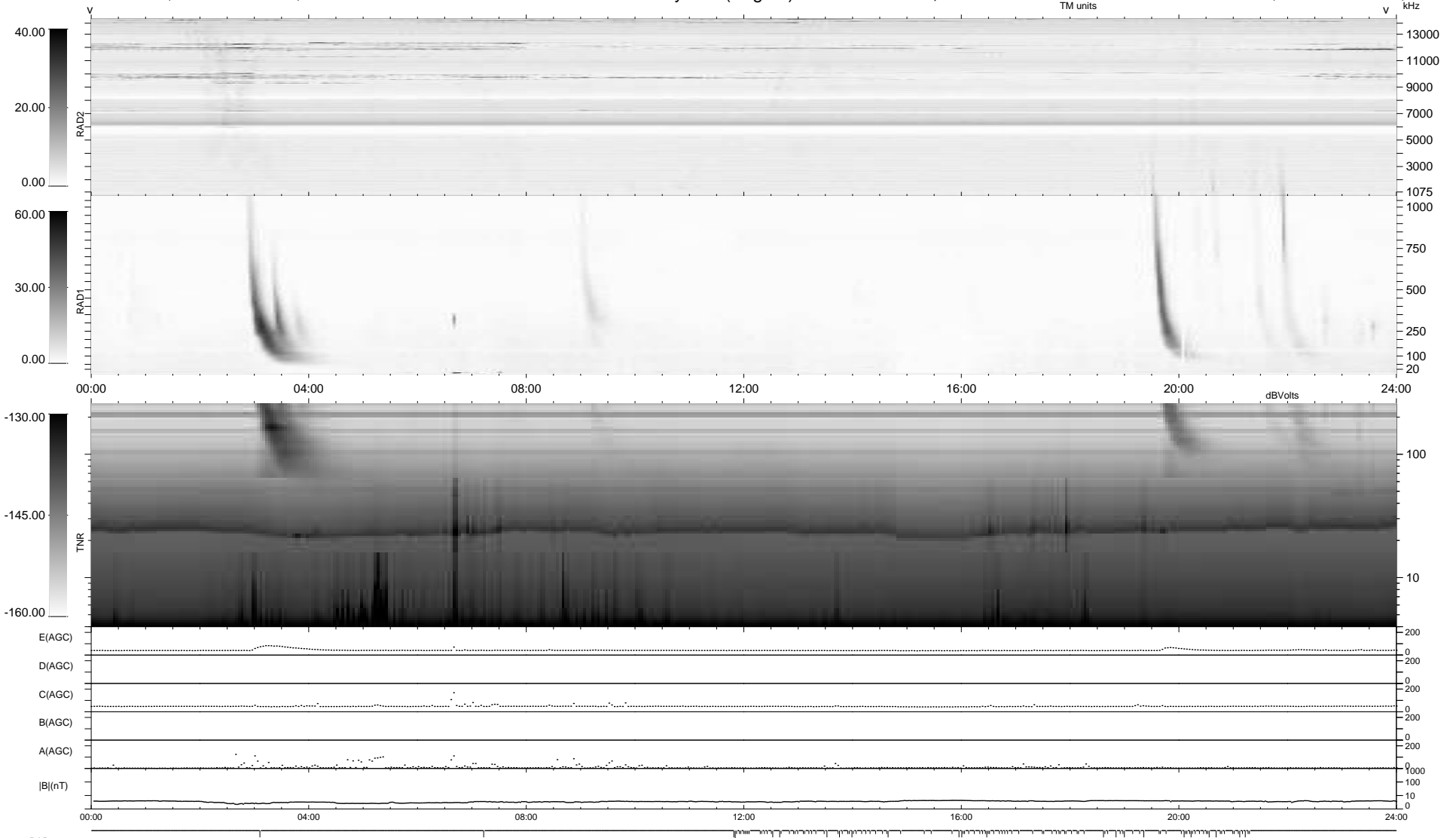
120 bad + 819 good MF/939MF projected (87%) - 0 missing MFs
 Avg interval = 180 secs
 Re = 214.72 (205.01, -63.61, -5.18 GSE)

windlib 2.0b

LZ version =

WIND/WAVES Summary Plot (Page 1) for 03-JUN-2016, DOY = 155

DAILY 2017-03-21 14:36:03
 Re = 213.61 (204.76, -60.59, -5.66 GSE)



```

RAD2
Antenna Ey .....
Mode LIN(1) .....
SUM/SEP SEP .....
Toggle OFF .....

RAD1
Antenna Ex .....
Mode LIS(2,4) .....
SUM/SEP SUM .....
Toggle OFF .....

TNR
Antenna ExEy .....
Mode A-32 .....
Sweep ACE .....
  
```