

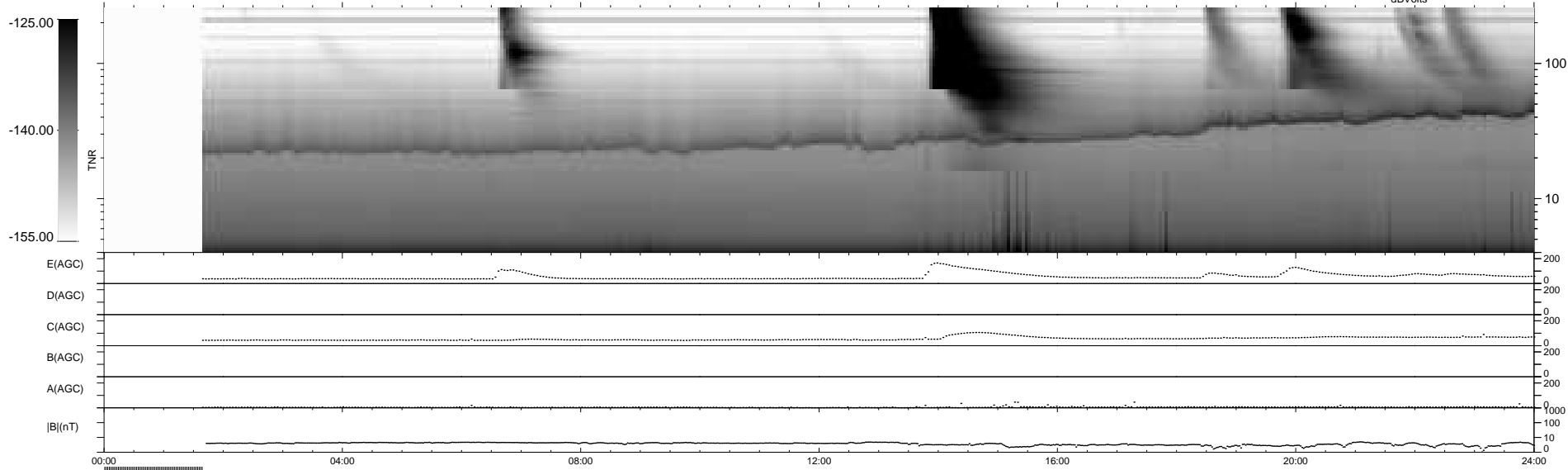
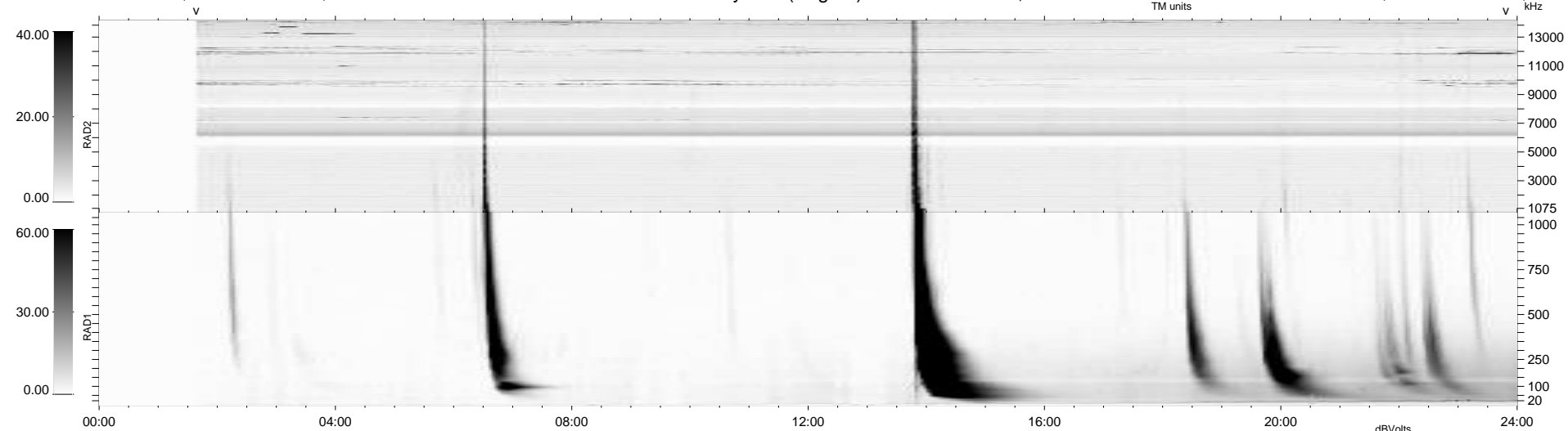
9 bad + 865 good MF/939MF projected (92%) - 65 missing MFs
Avg interval = 180 secs
Re = 223.61 (207.48, -83.38, -1.12 GSE)

windlib 2.0b

LZ version =

WIND/WAVES Summary Plot (Page 1) for 26-MAY-2016, DOY = 147

DAILY 2017-03-21 14:31:18
Re = 222.55 (207.08, -81.51, -1.60 GSE)



RAD2 Antenna Mode SUM/SEP Toggle
RAD1 Antenna Mode SUM/SEP Toggle
TNR Antenna Mode Sweep