

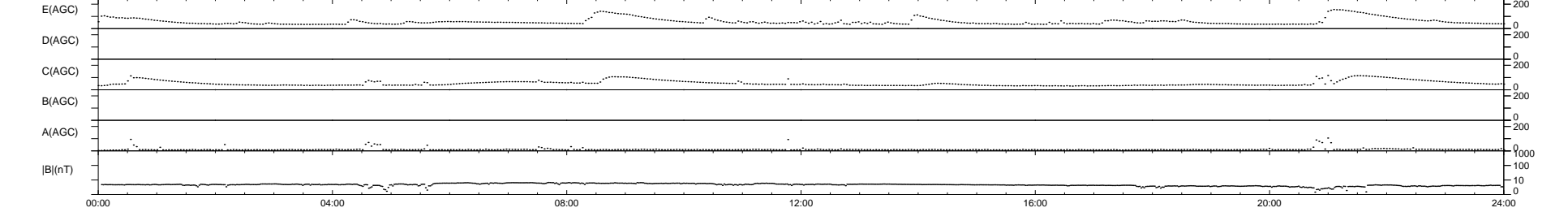
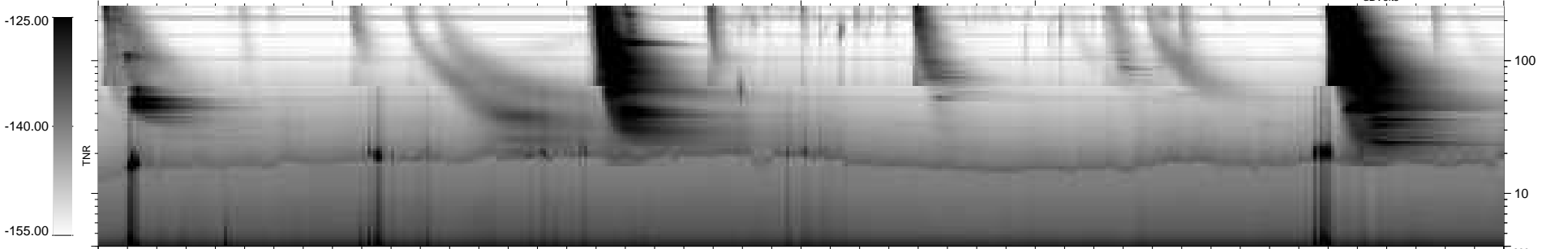
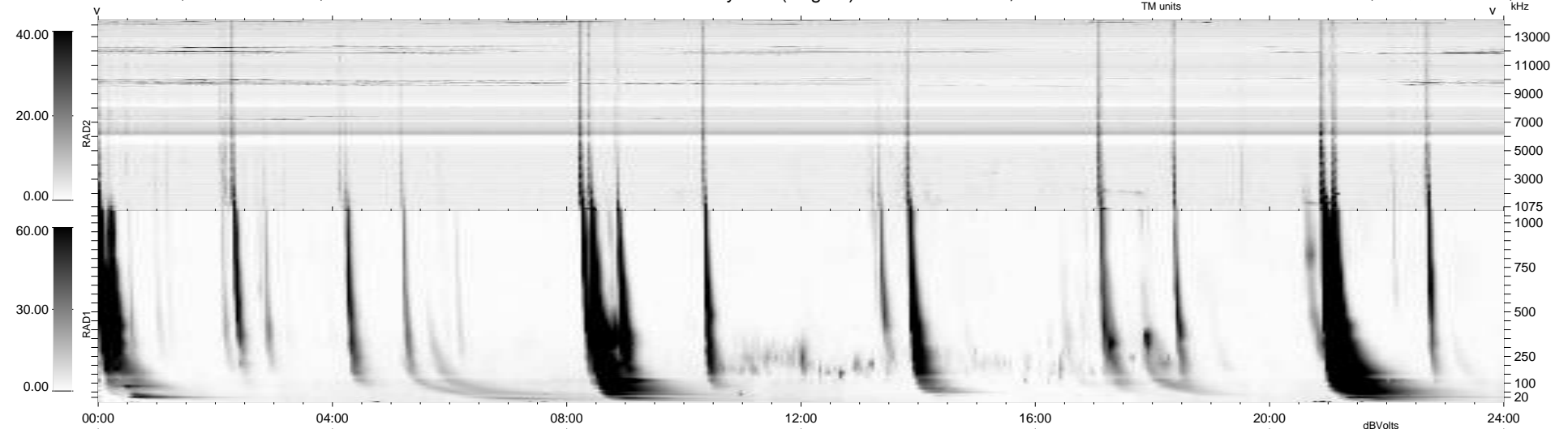
5 bad + 934 good MF/939MF projected (99%) - 0 missing MFs
 Avg interval = 180 secs
 Re = -226.03 (208.54, -87.18, -0.04 GSE)

windlib 2.0b

LZ version =

WIND/WAVES Summary Plot (Page 1) for 24-MAY-2016, DOY = 145

DAILY 2017-03-21 14:30:13
 Re = 224.86 (208.00, -85.42, -0.56 GSE)



```

RAD2
Antenna Ey .....
Mode LIN(1) .....
SUM/SEP SEP .....
Toggle OFF .....

RAD1
Antenna Ex .....
Mode LIS(2,4) .....
SUM/SEP SUM .....
Toggle OFF .....

TNR
Antenna ExEy .....
Mode A-32 .....
Sweep ACE .....
  
```