

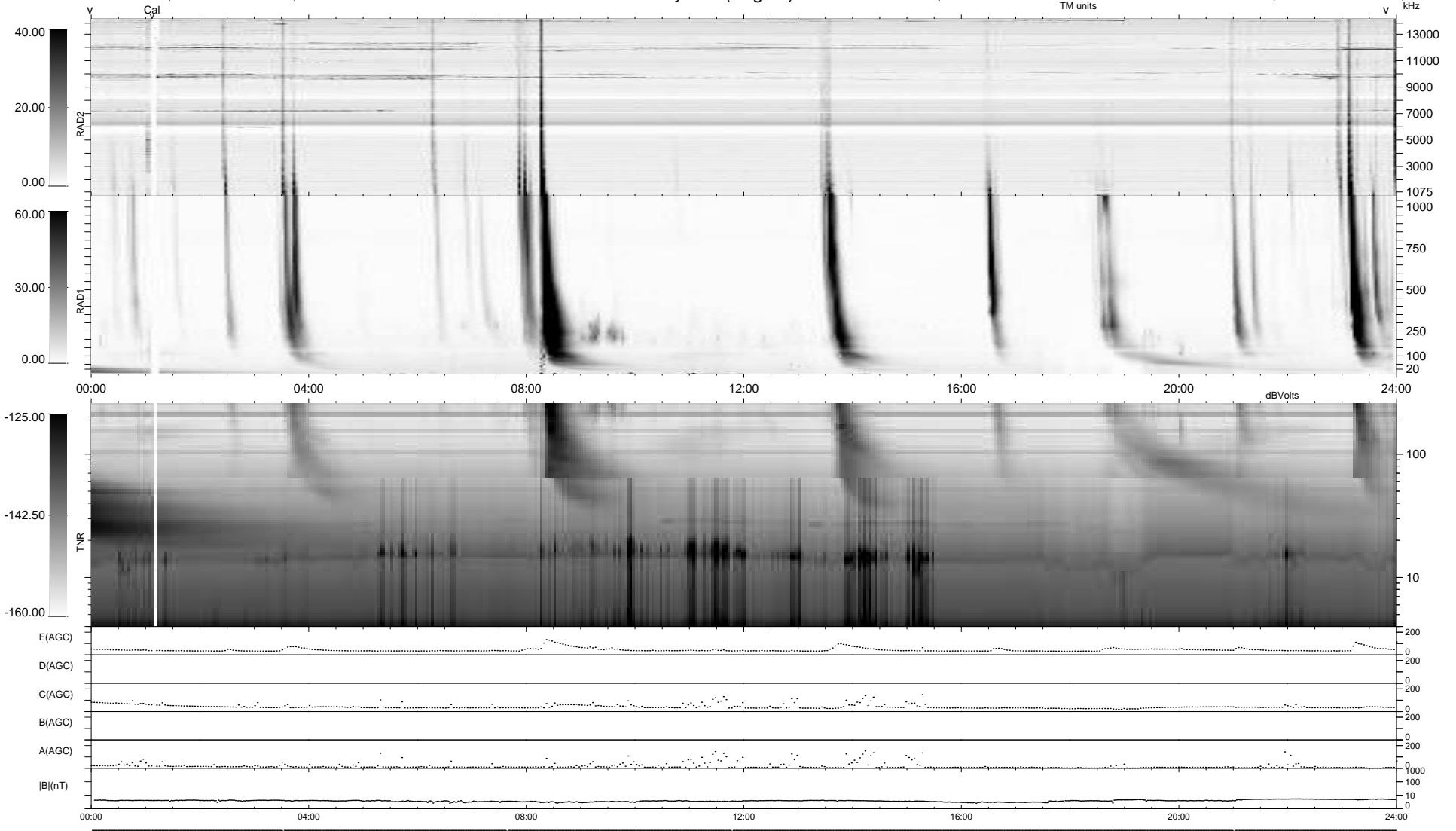
4 bad + 935 good MF/939MF projected (99%) - 0 missing MFs
 Avg interval = 180 secs
 Re = 227.23 (209.15, -88.82, 0.48 GSE)

windlib 2.0b

LZ version =

WIND/WAVES Summary Plot (Page 1) for 23-MAY-2016, DOY = 144

DAILY 2017-03-21 14:29:44
 Re = 226.04 (208.54, -87.19, -0.04 GSE)



RAD2
 Antenna Ey
 Mode LIN(1)
 SUM/SEP SEP
 Toggle OFF
 RAD1
 Antenna Ex
 Mode LIS(2,4)
 SUM/SEP SUM
 Toggle OFF
 TNR
 Antenna ExEy
 Mode A-32
 Sweep ACE