

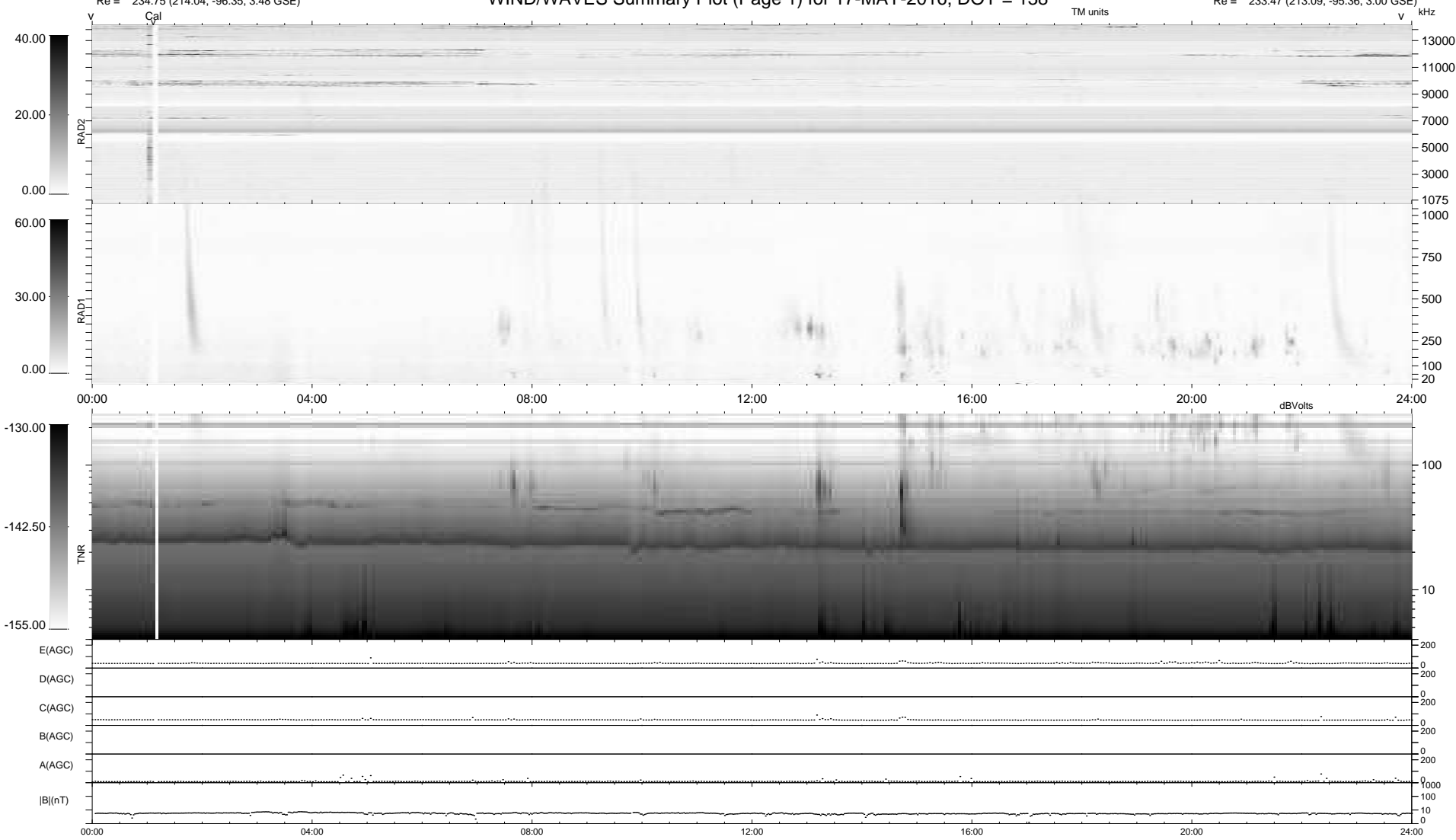
7 bad + 932 good MF/939MF projected (99%) - 0 missing MFs
 Avg interval = 180 secs
 Re = 234.75 (214.04, -96.35, 3.48 GSE)

windlib 2.0b

LZ version =

WIND/WAVES Summary Plot (Page 1) for 17-MAY-2016, DOY = 138

DAILY 2017-03-21 14:26:28
 Re = 233.47 (213.09, -95.36, 3.00 GSE)



```

RAD2
Antenna Ey .....
Mode LIN(1) .....
SUM/SEP SEP .....
Toggle OFF .....

RAD1
Antenna Ex .....
Mode LIS(2,4) .....
SUM/SEP SUM .....
Toggle OFF .....

TNR
Antenna ExEy .....
Mode A-32 .....
Sweep ACE .....
  
```