

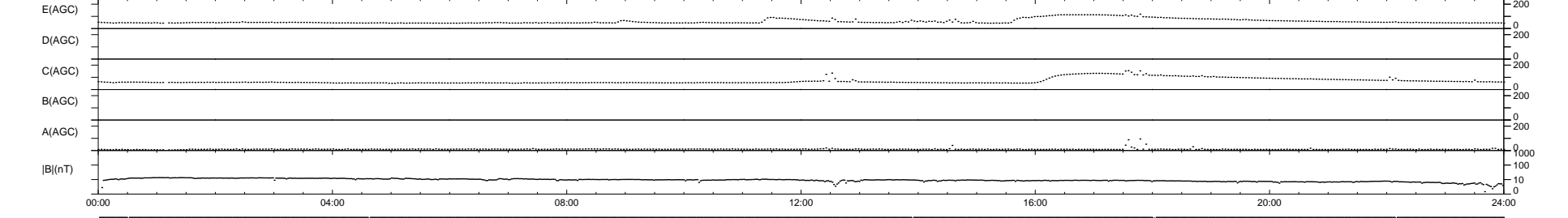
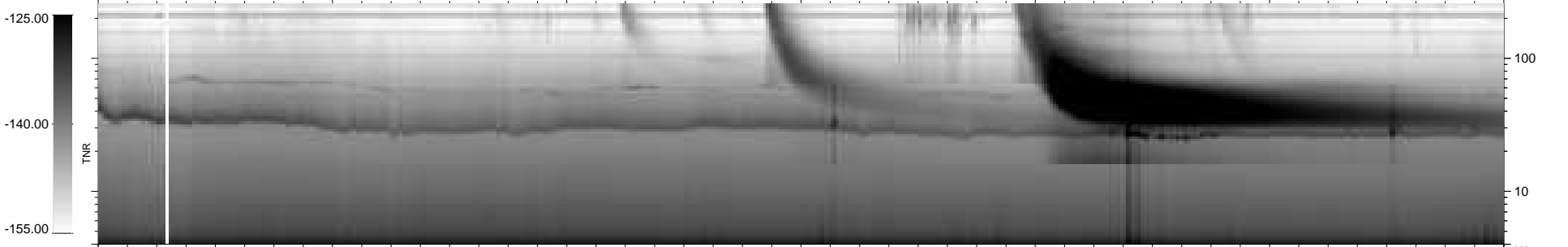
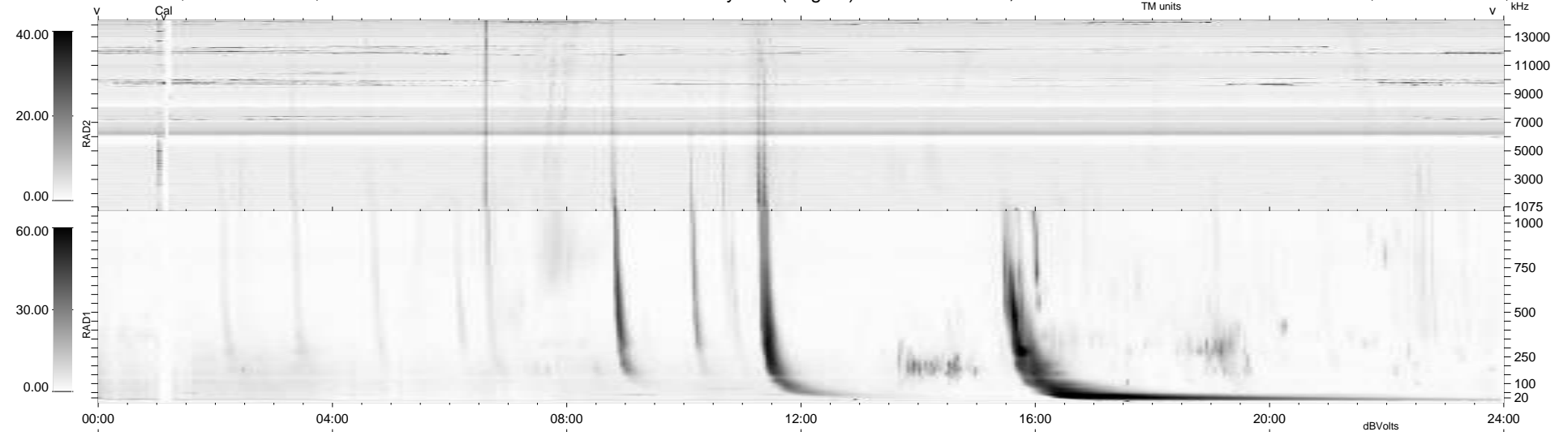
6 bad + 933 good MF/939MF projected (99%) - 0 missing MFs  
 Avg interval = 180 secs  
 Re = 237.34 (216.09, -98.07, 4.45 GSE)

windlib 2.0b

LZ version =

### WIND/WAVES Summary Plot (Page 1) for 15-MAY-2016, DOY = 136

DAILY 2017-03-21 14:25:19  
 Re = 236.06 (215.05, -97.26, 3.97 GSE)



RAD2  
 Antenna Ey .....  
 Mode LIN(1) .....  
 SUM/SEP SEP .....  
 Toggle OFF .....  
 RAD1  
 Antenna Ex .....  
 Mode LIS(2,4) .....  
 SUM/SEP SUM .....  
 Toggle OFF .....  
 TNR  
 Antenna ExEy .....  
 Mode A-32 .....  
 Sweep ACE .....