

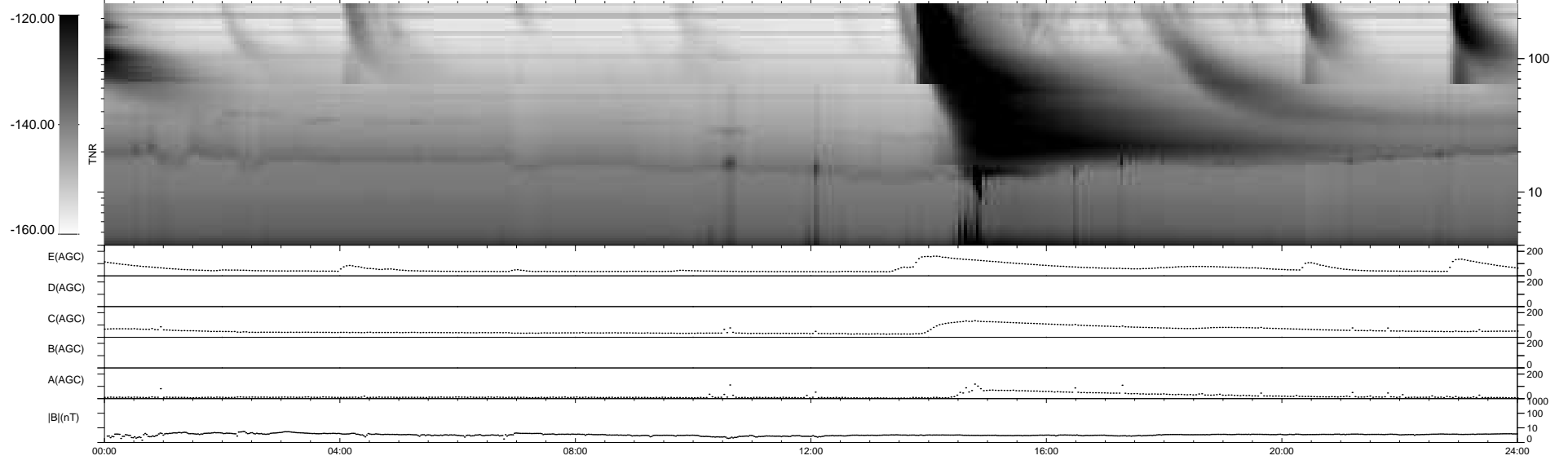
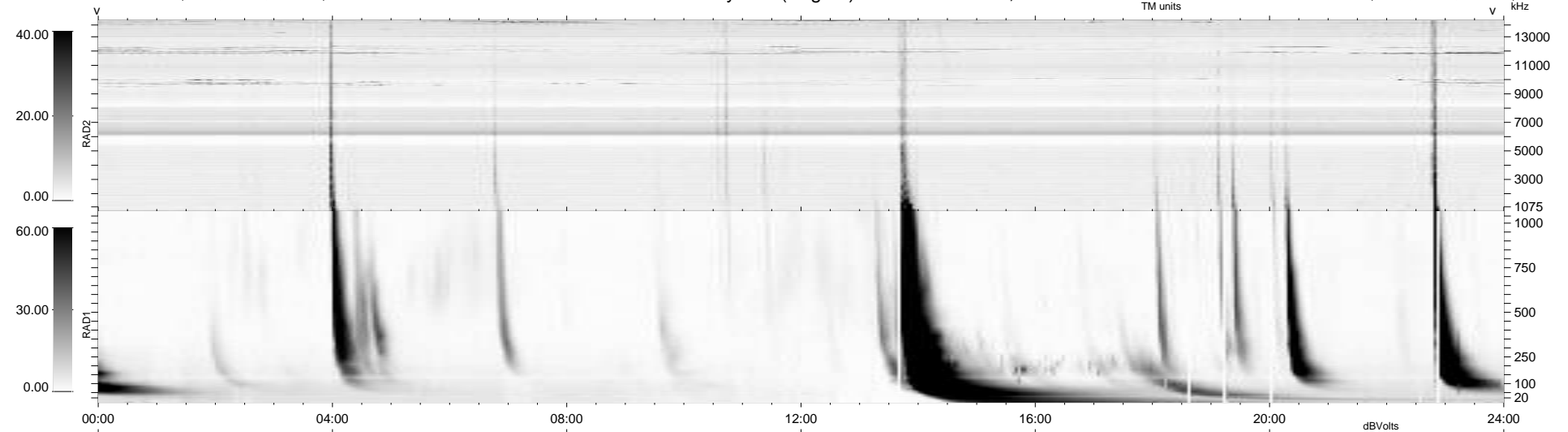
100 bad + 839 good MF/939MF projected (89%) - 0 missing MFs
Avg interval = 180 secs
Re = -249.73 (228.29, -100.80, 9.43 GSE)

windlib 2.0b

LZ version =

WIND/WAVES Summary Plot (Page 1) for 04-MAY-2016, DOY = 125

DAILY 2017-03-21 14:19:23
Re = 248.89 (227.25, -101.11, 9.01 GSE)



RAD2
Antenna Ey
Mode LIN(1)
SUM/SEP SEP
Toggle OFF

RAD1
Antenna Ex
Mode LIS(2,4)
SUM/SEP SUM
Toggle OFF

TNR
Antenna ExEy
Mode A-32
Sweep ACE