

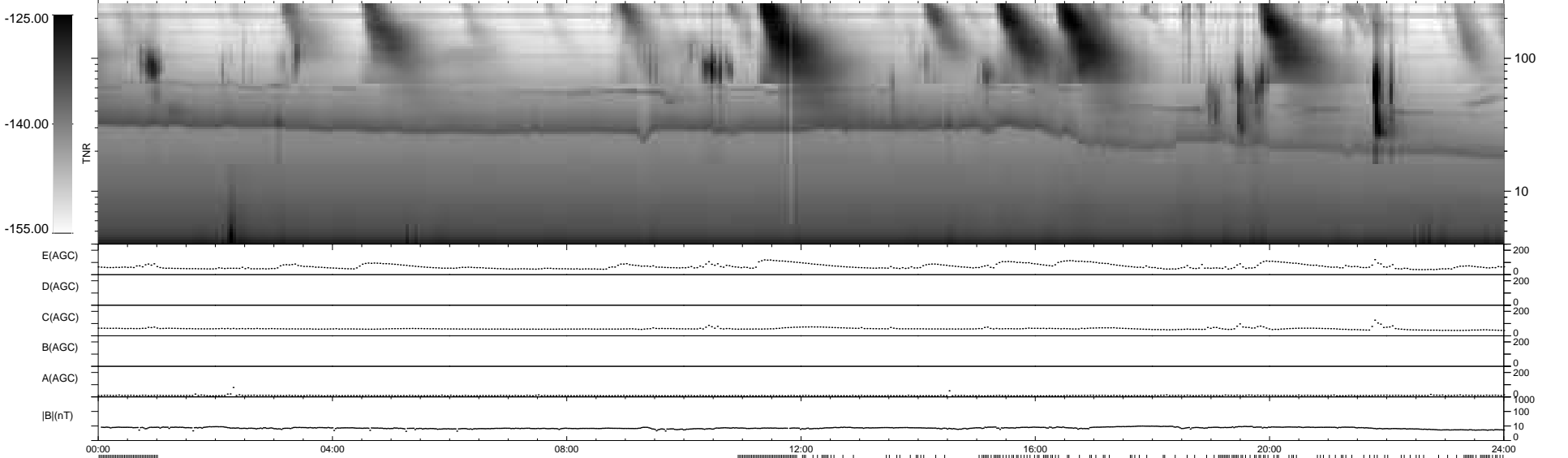
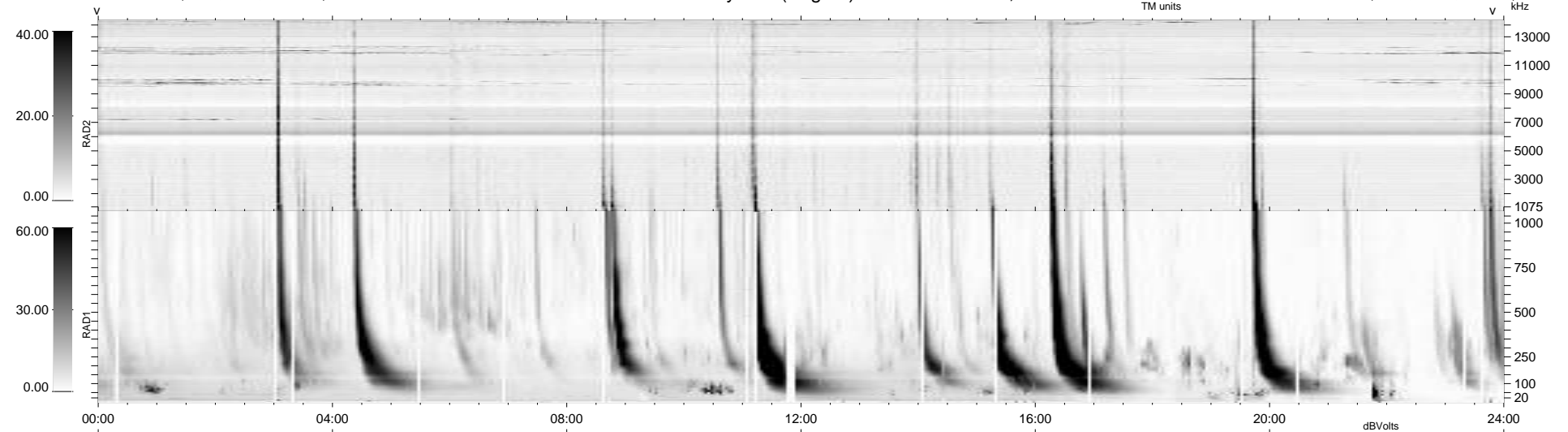
96 bad + 608 good MF/939MF projected (64%) - 235 missing MFs
 Avg interval = 180 secs
 Re = -251.22 (230.34, -99.74, 10.26 GSE)

windlib 2.0b

LZ version =

WIND/WAVES Summary Plot (Page 1) for 02-MAY-2016, DOY = 123

DAILY 2017-03-21 14:18:15
 Re = 250.51 (229.33, -100.33, 9.85 GSE)



```

RAD2
Antenna Ey .....
Mode LIN(1) .....
SUM/SEP SEP .....
Toggle OFF .....

RAD1
Antenna Ex .....
Mode LIS(2,4) .....
SUM/SEP SUM .....
Toggle OFF .....

TNR
Antenna ExEy .....
Mode A-32 .....
Sweep ACE .....
  
```