

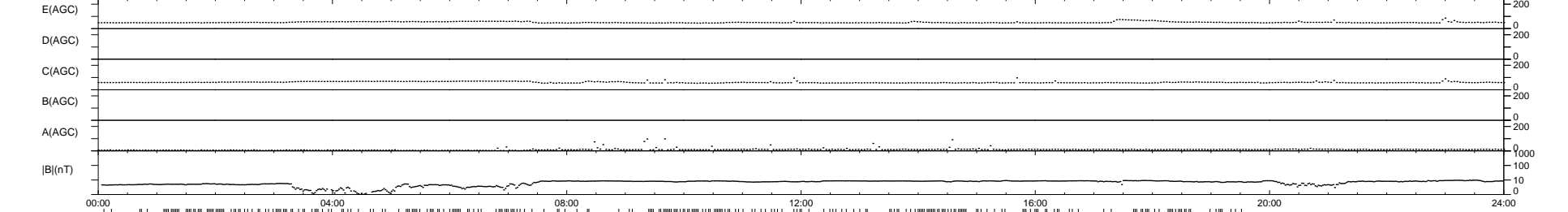
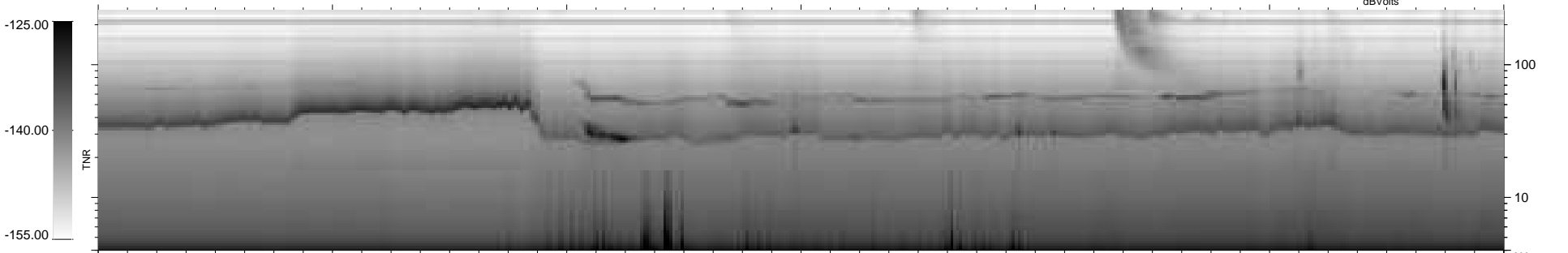
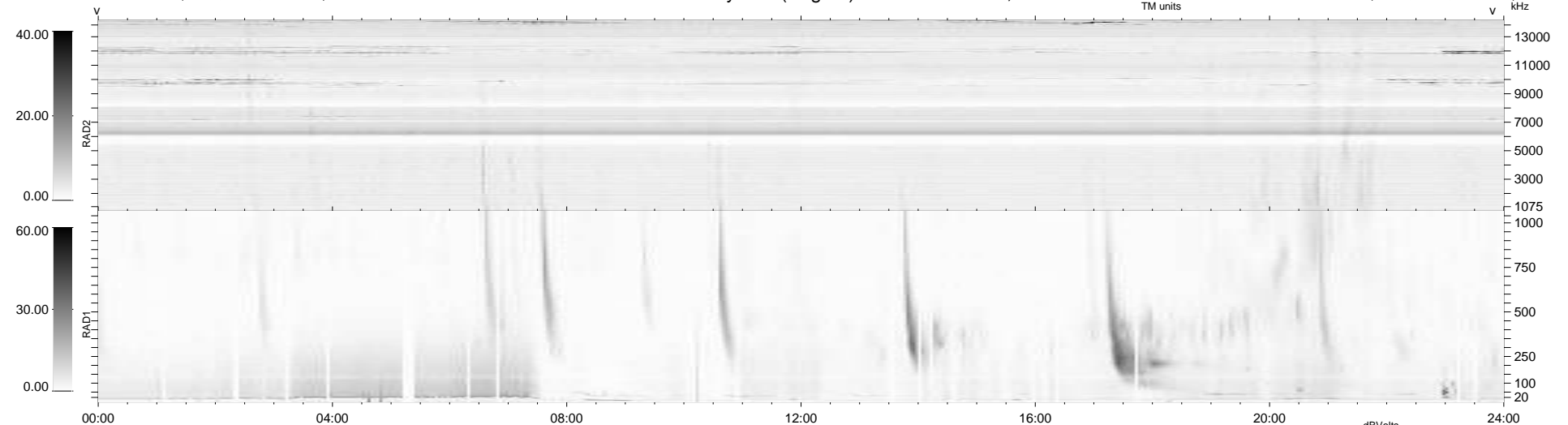
19 bad + 640 good MF/939MF projected (68%) - 280 missing MFs
 Avg interval = 180 secs
 Re = 252.46 (232.35, -98.10, 11.03 GSE)

windlib 2.0b

LZ version =

WIND/WAVES Summary Plot (Page 1) for 30-APR-2016, DOY = 121

DAILY 2017-03-21 14:17:12
 Re = 251.87 (231.36, -98.99, 10.65 GSE)



RAD2
 Antenna Ey
 Mode LIN(1)
 SUM/SEP SEP
 Toggle OFF
 RAD1
 Antenna Ex
 Mode LIS(2/4)
 SUM/SEP SUM
 Toggle OFF
 TNR
 Antenna ExEy
 Mode A-32
 Sweep ACE